

HELIOS at MAMMOTH, SOUTH

CONDOMINIUM PLAN

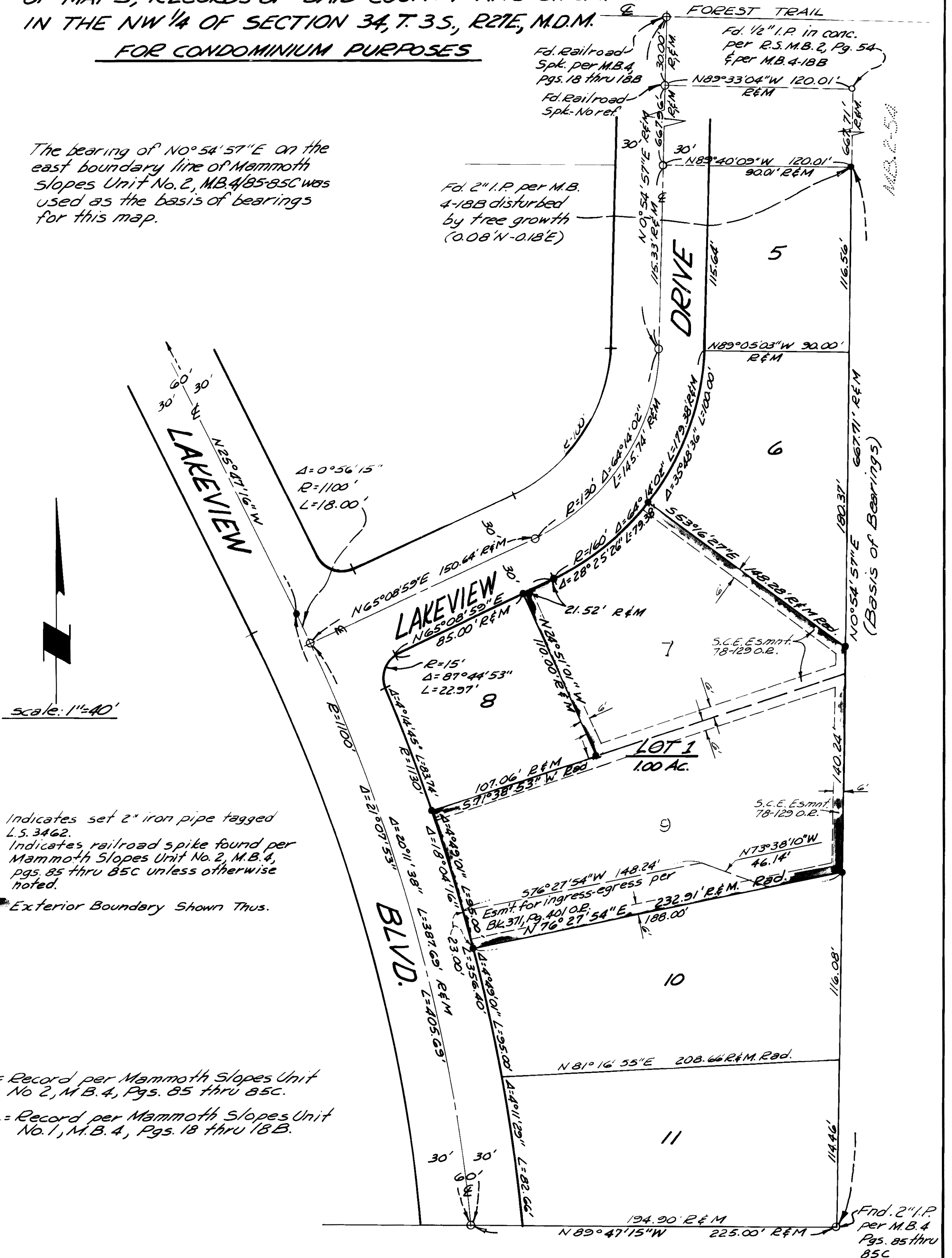
TRACT 36-116 ~ MAMMOTH LAKES, CALIFORNIA.

TRACT MAP

IN THE COUNTY OF MONO, STATE OF CALIFORNIA, BEING A RESUBDIVISION OF LOTS 7 AND 9 OF MAMMOTH SLOPES UNIT NO. 2, RECORDED IN BOOK 4, PAGES 85, 85A, 85B & 85C OF MAPS, RECORDS OF SAID COUNTY AND SITUATED IN THE NW 1/4 OF SECTION 34, T. 3 S., R. 27 E., M.D.M.

FOR CONDOMINIUM PURPOSES

The bearing of $N0^{\circ}54'57''E$ on the east boundary line of Mammoth slopes Unit No. 2, M.B. 4/85-85C was used as the basis of bearings for this map.



- Indicates set 2" iron pipe tagged L.S. 3462.
- Indicates railroad spike found per Mammoth Slopes Unit No. 2, M.B. 4, pgs. 85 thru 85C unless otherwise noted.

Exterior Boundary Shown Thus.

R = Record per Mammoth Slopes Unit No. 2, M.B. 4, Pgs. 85 thru 85C.

R₁ = Record per Mammoth Slopes Unit No. 1, M.B. 4, Pgs. 18 thru 18B.