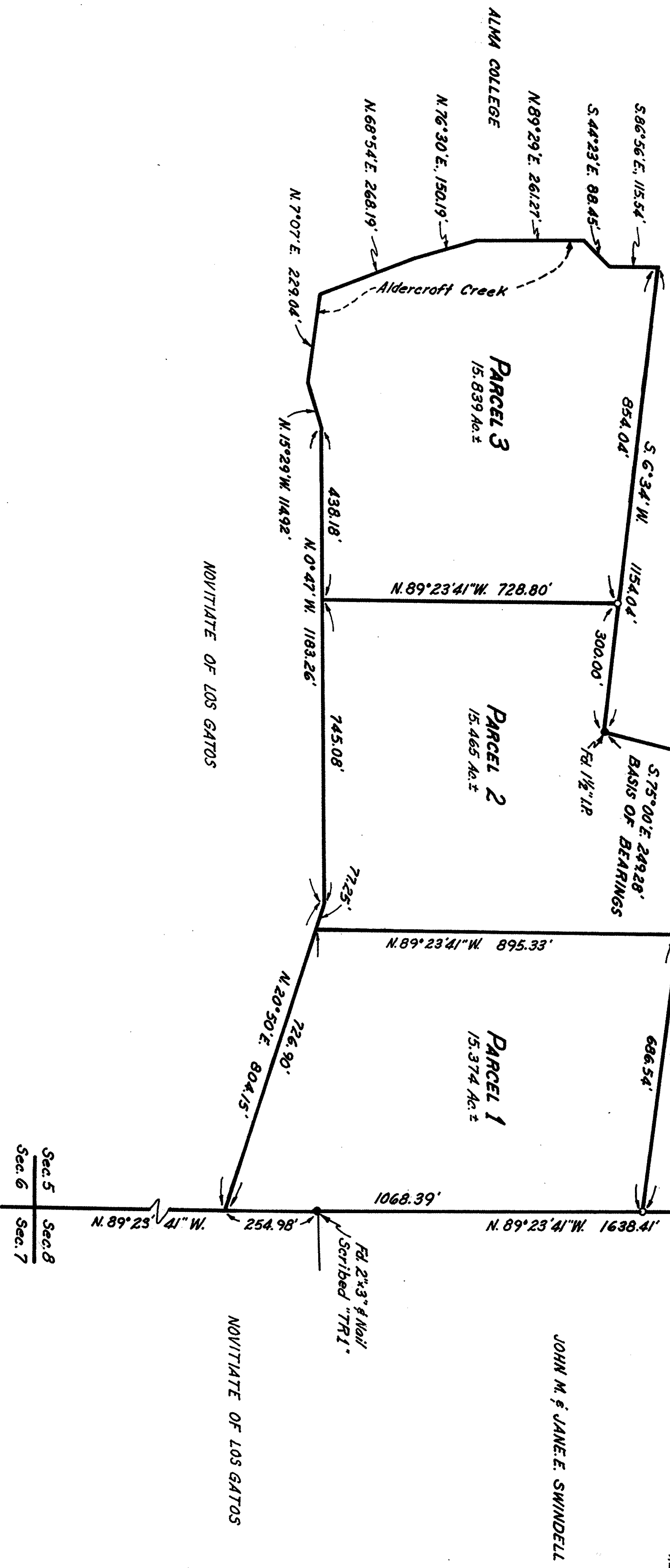
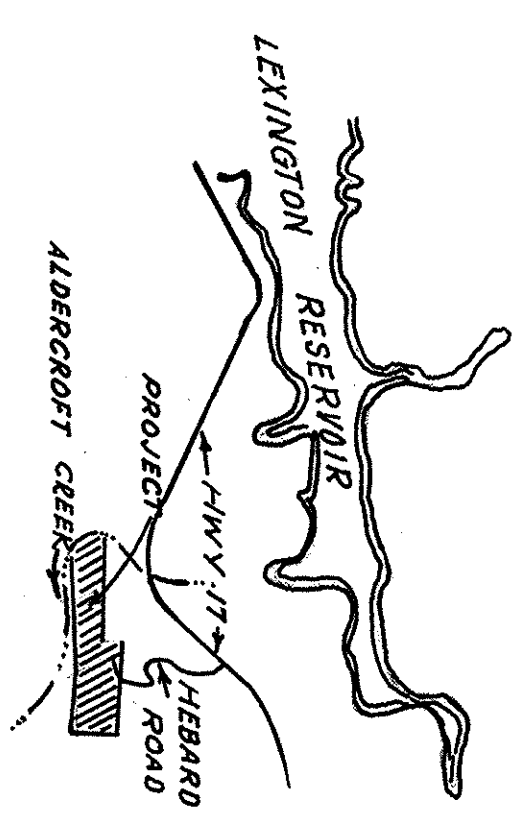




FRANK E. & HELEN TOWNE



BASIS OF BEARINGS

The bearing $S 75^{\circ}00' E$ as indicated Basis of Bearings on the above map and as said course is called for in the Decree of Distribution filed for Record in Book 6896 Official Records Page 607, Santa Clara County Records, was taken as Basis of Bearings for this map.

SURVEYOR'S CERTIFICATE

This map correctly represents a survey made by me or under my direction in conformance with the requirements of the Land Surveyors Act of the request of Charles R. Hebard in June, 1970.

Howard G. Kingston
HOWARD G. KINGSTON L.S. 2714

NOTES AND LEGEND

- All distances and dimensions are shown in feet and decimals thereof.
- Indicates 1" iron pipe monument found unless noted otherwise.
- Indicates 1" iron pipe monument set.

COUNTY SURVEYOR'S CERTIFICATE

This map has been examined for conformance with the requirements of the Land Surveyors Act this 18th day of August, 1970

JAMES T. POTT, County Surveyor
By *Charles R. Hebard*
DEPUTY

**#3858926
RECORDER'S CERTIFICATE**

Filed this 18th day of August, 1970 at 2:12 PM, in Book 2574 of Maps of page 532, at the request of George S. Nolte and Associates. # 502

GEORGE E. ENWES, County Recorder
By *George S. Nolte*
DEPUTY

RECORD OF SURVEY

PORTION OF S1/4 SEC. 5, T. 9S. R. 1W., M.D.
SANTA CLARA COUNTY CALIFORNIA

SCALE: 1" = 200'
JUNE, 1970
GEORGE S. NOLTE AND ASSOCIATES
SAN JOSE • SAN FRANCISCO • WALNUT CREEK