

CORNER RECORD

Agency Index

BK 128 PG 31

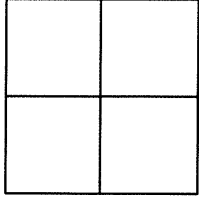
Document Number

CR 13228

City of EDEN TOWNSHIPCounty of ALAMEDA, CaliforniaBrief Legal Description NAIL MONUMENT LOCATED WITHIN ROBEY DR IN FRONT OF 16855 ROBEY DR

CORNER TYPE

COORDINATES (Optional)



Government Corner ☐ Control ☒
Meander ☐ Property ☐
Rancho ☐ Other ☐

N. _____ E. _____

Elevation _____

Units Metric ☐ U.S. Survey Foot ☐

Horizontal Datum _____

Zone _____ Epoch Date _____

Vertical Datum _____

☐ Complies with Public Resources Code §§8801-8819☐ Complies with Public Resources Code §§8890-8902Date of Survey 8/1/19PLS Act Ref: ☐ 8765 (d) ☒ 8771 ☐ 8773 ☐ Other: _____

Corner/Monument: ☒ Left as found ☐ Established ☐ Rebuilt ☒ Pre-Construction
☐ Found and tagged ☐ Reestablished ☒ Referenced ☐ Post-Construction

Narrative of corner identified and monument as found, set, reset, replaced, or removed:

☐ See sheet #2 for description (s):

FOUND NAIL IN CONCRETE IN MONUMENT WELL

FOUND AND SET POINTS AS SHOWN ON PAGE 2.

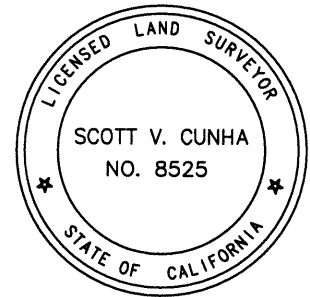
THIS POINT WAS REFERENCED PRIOR TO A CONSTRUCTION PROJECT IN THE VICINITY.

THE TIES SHOWN HEREON ARE FOR THE PURPOSE OF PERPETUATING FOUND MONUMENTATION.

NO CLAIM IS MADE AS TO THE RELATIONSHIP OF THE POINTS OR LINES SHOWN HEREON TO TRUE BOUNDARY LOCATION.

SURVEYOR'S STATEMENT

This Corner Record was prepared by me or under my direction in conformance with

the Professional Land Surveyors' Act on AUGUST 5, 2019.Signed SCOTT V. CUNHA P.L.S. or R.C.E. No. LS 8525

COUNTY SURVEYOR'S STATEMENT

AUG 07 2019

This Corner Record was received _____,

and examined and filed NOV 18 2019.Signed D. Ian Wilson P.L.S. or R.C.E. No. 7010Title ALAMEDA COUNTY SURVEYOR

County Surveyor's Comment



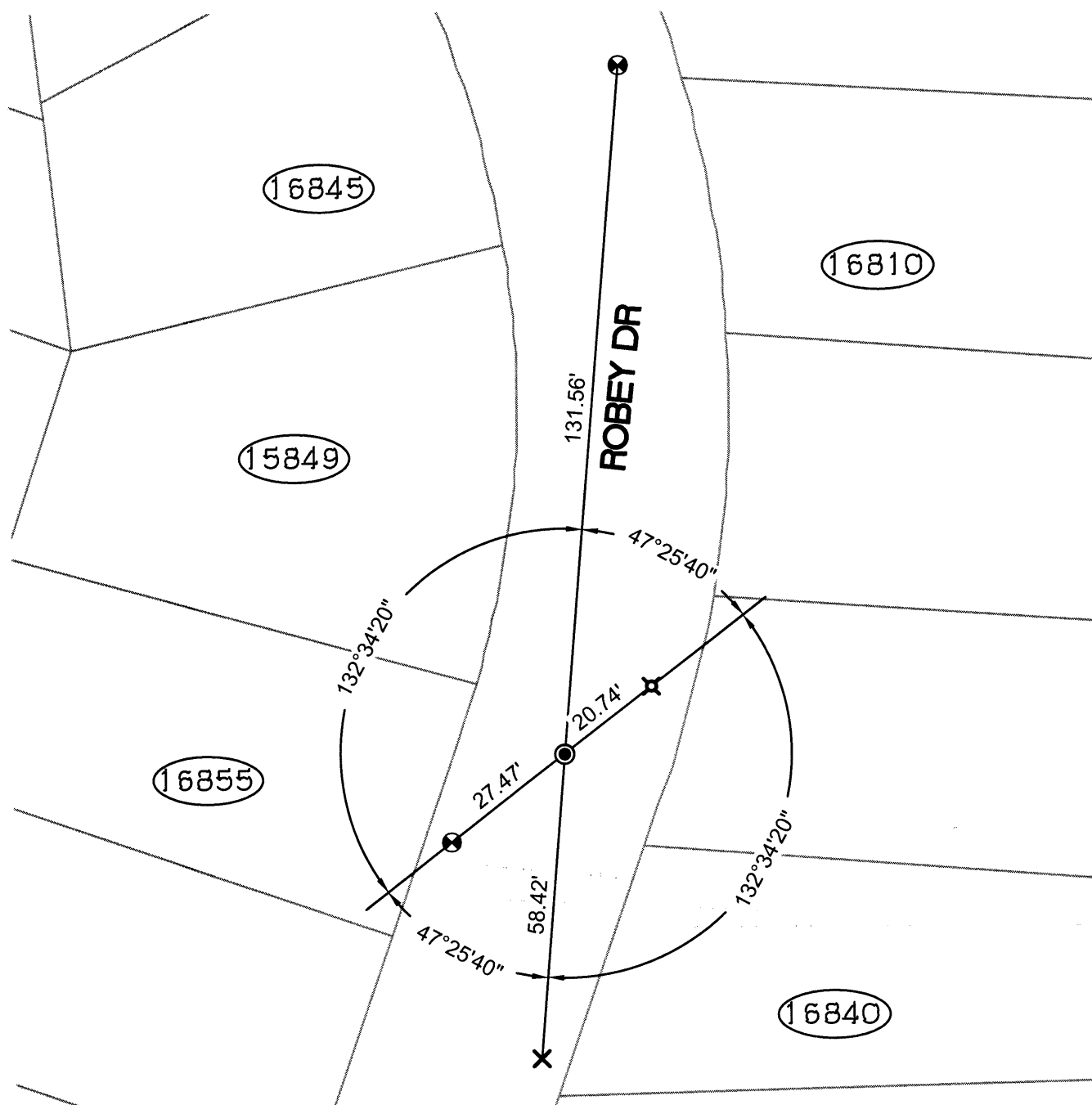
SPEC-2377-Pre

SCALE: 1"=30'

LEGEND

- FOUND NAIL IN CONCRETE IN MONUMENT WELL
- ⊗ SET CUT CROSS IN DRIVEWAY
- ✕ SET CUT CROSS IN WALK
- ⊗ SET CUT CROSS IN CONC PARKING

(19592) REFERENCE STREET ADDRESS



219105-Robey-CR-01