

# CORNER RECORD

Agency Index

BK141 PG 90

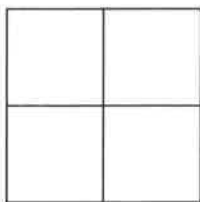
Document Number

CR 14924

City of OAKLAND

County of ALAMEDA, California

Brief Legal Description WELL MONUMENT LOCATED WITHIN E. 21st STREET AT 18th AVE



## CORNER TYPE

Government Corner ☐ Control ☒  
Meander ☐ Property ☐  
Rancho ☐ Other ☐

Date of Survey 10/19/2020

## COORDINATES (Optional)

N. E.

Elevation

Units Metric ☐ U.S. Survey Foot ☐

Horizontal Datum

Zone Epoch Date

Vertical Datum

☐ Complies with Public Resources Code §§8801-8819☐ Complies with Public Resources Code §§8890-8902PLS Act Ref: ☐ 8765 (d)☒ 8771☐ 8773☐ Other:Corner/ Monument: ☒ Left as found☐ Established☐ Rebuilt☒ Pre-Construction☐ Found and tagged☐ Reestablished☒ Referenced☐ Post-Construction

Narrative of corner identified and monument as found, set, reset, replaced, or removed:

☐ See sheet #2 for description (s):

FOUND 1/4" PIN IN CONCRETE IN MONUMENT WELL.

MONUMENT FOUND 0.2' BELOW GRADE. EXCAVATED PRIOR TO REFERENCING.

FOUND AND SET POINTS AS SHOWN ON PAGE 2.

THIS POINT WAS REFERENCED PRIOR TO A CONSTRUCTION PROJECT IN THE VICINITY.

THE TIES SHOWN HEREON ARE FOR THE PURPOSE OF PERPETUATING FOUND MONUMENTATION.

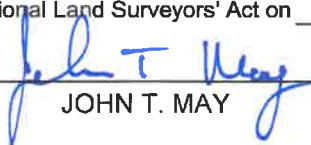
NO CLAIM IS MADE AS TO THE RELATIONSHIP OF THE POINTS OR LINES SHOWN HEREON TO TRUE BOUNDARY LOCATION.

## SURVEYOR'S STATEMENT

This Corner Record was prepared by me or under my direction in conformance with

the Professional Land Surveyors' Act on OCTOBER 1, 2021.

Signed

  
JOHN T. MAY

P.L.S. or P.C.E. No. 8570

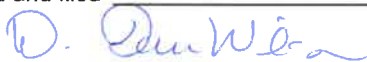


## COUNTY SURVEYOR'S STATEMENT

This Corner Record was received

and examined and filed OCT 26 2021

Signed



P.L.S. or P.C.E. No. 7010

Title COUNTY SURVEYOR

County Surveyor's Comment

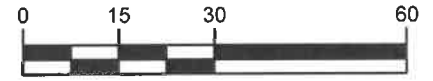


SCALE: 1"=30'

## LEGEND

- FOUND 1/4" PIN IN CONCRETE IN MONUMENT WELL
- ⊗ SET NAIL AND TAG STAMPED "TOWILL RP" IN WALK
- ✕ SET NAIL AND TAG STAMPED "TOWILL RP" IN CURB
- APN ASSESSOR'S PARCEL NUMBER

19592 REFERENCE STREET ADDRESS



GRAPHIC SCALE: 1 INCH = 30 FT

ALL MEASUREMENTS ARE IN U.S. SURVEY FOOT AND DECIMAL THEREOF

