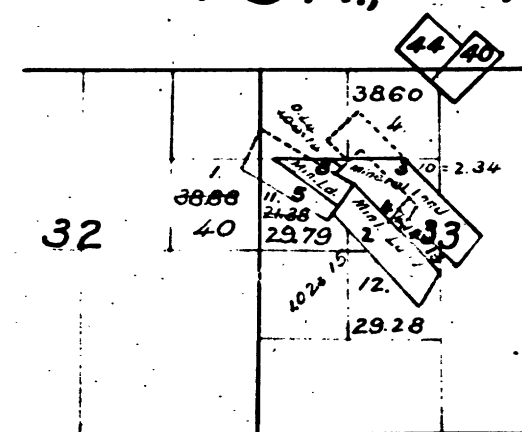


Township N°3 North, Range N°13 East, Mount Diablo Meridian.

A.B.

T3 N., R. 13 E., Mount Diablo Meridian, California.



- 40 Bovee Q. M. and Mill Site
- 44 Fritz
- 2 Segregation of agricultural from mineral land; Lots 10, 11, 12 in Sec. 33.  
see field notes of Dep. Surv. A. B. Beauvais, dated Mch. 12, 1884.
- 3 Segregation of agricultural from mineral land; Lots 5, 7, 10, 13 in Sec. 33.  
see field notes of Dep. Surv. A. B. Beauvais, dated April 12, 1884.
- 4 Segregation of agricultural from mineral land; Lots 13, 15 in Sec. 33.  
see field notes of Dep. Surv. A. B. Beauvais, dated April 12, 1884.
- 5 Segregation of agricultural from mineral land; Lots 11, 14 in Sec. 33 and Lot 1 in Sec. 32.  
see field notes of Dep. Surv. A. B. Beauvais, dated April 12, 1884 (see segregation 8, dated March 26, 1885)
- 8 Segregation of agricultural from mineral land; Lots 1, 14 in Sec. 33.  
see field notes of Dep. Surv. A. B. Beauvais, dated March 26, 1885 (Substituted for segregation 5, dated April 12, 1884)

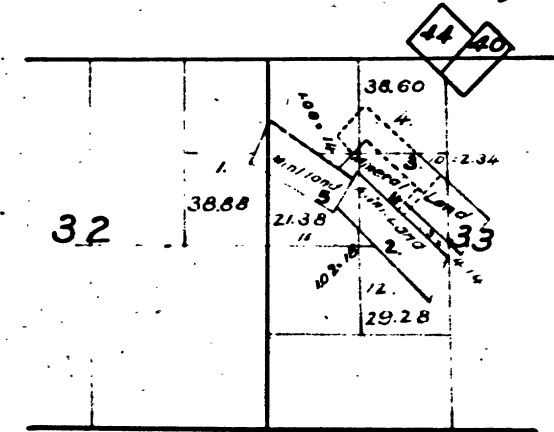
I hereby certify, that the above correctly shows the areas of fractional agricultural lots in the E½ of Section 32 and the W½ of Section 33, Township N°3 North, Range N°13 East, Mount Diablo Meridian, California, as they appear on a segregation diagram of above sections amended as to show the substitution of segregation 5 by segregation 8, approved April 8, 1885, and on file in this Office.

U.S. Surveyor General's Office.  
San Francisco, California.  
March 20, 1903.

Seal

W. S. Graham  
U.S. Surveyor General for California.

T. 3 N., R. 13 E., Mount Diablo Meridian, California.



- 40 Bovee Q. M. and Mill Site
- 44 Fritz
- 2 Segregation of agricultural from mineral land; Lots 10, 11, 12 in Sec. 33.  
see field notes of Dep. Surv. A. B. Beauvais, dated Mch. 12, 1884.
- 3 Segregation of agricultural from mineral land; Lots 5, 7, 10, 13 in Sec. 33.  
see field notes of Dep. Surv. A. B. Beauvais, dated April 12, 1884.
- 4 Segregation of agricultural from mineral land; Lots 13, 15 in Sec. 33.  
see field notes of Dep. Surv. A. B. Beauvais, dated April 12, 1884.
- 5 Segregation of agricultural from mineral land; Lots 11, 14 in Sec. 33 and Lot 1 in Sec. 32.  
see field notes of Dep. Surv. A. B. Beauvais, dated April 12, 1884.

I hereby certify, that the above correctly shows the areas of fractional agricultural lots in the E½ of Section 32 and the W½ of Section 33, Township N°3 North, Range N°13 East, Mount Diablo Meridian, California, as they appear on a segregation diagram of above sections, approved April 30, 1884, and on file in this Office.

U.S. Surveyor General's Office.  
San Francisco, California.  
March 20, 1903.

Seal

W. S. Graham  
U.S. Surveyor General for California.

DEPARTMENT OF THE INTERIOR,  
GENERAL LAND OFFICE,  
Washington, D. C., Feb. 5, 1903.  
I hereby certify that this is a true copy  
of the plat of official survey of the lands  
to which it relates, on file in this office.

H. H. [Signature]  
Recorder, General Land Office.

41 249

5

T 3 N R 13 E M D

