

D

C

B

A

EXTERIOR FINISH SCHEDULE			
TAG	MATERIAL	FINISH/STYLE	COLOR
BRK-1	BRICK VENEER	SMOOTH / VELOUR / MODULAR SIZE	CHEROKEE BRICK: VELOUR MEDIUM GRAY
BRK-2	BRICK VENEER	SMOOTH / VELOUR / MODULAR SIZE	CHEROKEE BRICK: VELOUR LIGHT GRAY
MTL-1	METAL COPING	PRE-FINISHED	MATCH RAL#7021 MATTE MT0028 - "FLAT BLACK"
MTL-2	ALUM. STOREFRONT	ANNODIZED	MATCH RAL#7021 MATTE MT0028 - "FLAT BLACK"
MTL-3	METAL CANOPY	POWDERCOAT	MATCH RAL#7021 MATTE MT0028 - "FLAT BLACK"
MTL-4	H.M. DOOR AND FRAME	PAINT	MATCH RAL#7021 MATTE MT0028 - "FLAT BLACK"
MTL-5	METAL DOWNSPOUT	PAINT	MATCH RAL#7021 MATTE MT0028 - "FLAT BLACK"
SP-1	CEMENT PLASTER	FINE FINISH	MATCH SW7504 "KEYSTONE GRAY"
SP-3	CEMENT PLASTER	FINE FINISH	MATCH SW7026 "GRIFFIN"

* CONTRACTOR SHALL SUBMIT SAMPLES FOR STARBUCKS APPROVAL, PRIOR TO ORDERING MATERIALS

KEYED NOTES

1. NON-ILLUMINATED PROTECTIVE BOLLARD.

2. PRIMARY ENTRANCE DOOR(S)

3. STORE ADDRESS: PROVIDE 3" HIGH BLACK ACRYLIC STORE ADDRESS ON GLAZING ABOVE MAIN ENTRY DOOR.

4. PRE-FINISHED METAL COPING, TYPICAL

5. OUTLINE OF ROOF BEYOND.

6. DECORATIVE C-CHANNEL. SEE DETAILS ON A5001.

7. EXTERIOR SECURITY LIGHT.

8. PRE-FABRICATED METAL CANOPY INSTALLED BY GC. BASIS OF DESIGN: 'SUPER LUMIDECK' BY MAPES ARCHITECTURAL CANOPIES. GC TO COORDINATE WITH CANOPY VENDOR.

9. ELECTRIC METER, SEE ELECTRIC DRAWINGS.

10. ROOF ACCESS LADDER WITH LOCKING COVER.
11. FUTURE SIGNAGE BY OTHERS (SHOWN FOR REFERENCE ONLY).

12. PROVIDE J-BOX WITH PULL STRING FOR FUTURE BUILDING SIGNAGE. COORDINATE LOCATION WITH SIGN VENDOR.

13. PROVIDE 3/4" MARINE GRADE PLYWOOD BLOCKING FOR EXTERIOR SIGNAGE. EXTEND BLOCKING 8" MINIMUM BEYOND EDGES OF SIGNAGE.

14. EXTERIOR SCENCE LIGHTING

15. CLEVIS AND TIE-ROD BY CANOPY MANUFACTURER INSTALLED BY CONTRACTOR.

16. EXTERIOR FINISH REVEAL. SEE DETAIL ON A5001.

17. LOCKABLE HOSE BIBB, SEE PLUMBING DRAWINGS.

18. GAS METER, SEE PLUMBING DRAWINGS.

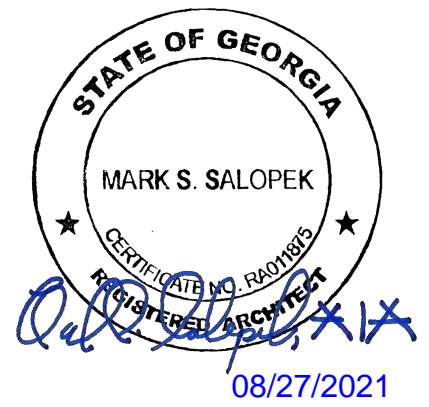
19. METAL AWNING INSTALLED BY GC. GC TO COORDINATE WITH AWNING VENDOR AND PROVIDE CONNECTIONS AS NECESSARY FOR INSTALLATION.

20. COWS TONGUE FIXTURE FOR ROOF OVERFLOW DRAIN.

GENERAL NOTES

- A. GENERAL CONTRACTOR TO COORDINATE AND SCHEDULE SIGNAGE INSTALLATION WITH THE SIGNAGE CONTRACTOR PROVIDING A MINIMUM SCHEDULING NOTICE OF 4 WEEKS AND 1 WEEK PRIOR TO SCHEDULED DATE OF INSTALLATION. CONSTRUCTION MANAGER TO PROVIDE GENERAL CONTRACTOR WITH TENANT'S SIGNAGE CONTRACTOR CONTACT INFORMATION.
- B. GENERAL CONTRACTOR SHALL COORDINATE WITH ELECTRICAL CONTRACTOR TO FURNISH AND INSTALL ELECTRICAL CIRCUITS INCLUDING ALL CONDUIT, WIRE, CONNECTIONS AND BREAKER AT PANEL BOARD NECESSARY TO SERVE SIGNAGE.
- C. TENANT'S SIGNAGE CONTRACTOR TO INSTALL SIGNAGE IN COMPLIANCE WITH LOCAL CODES AND OBTAIN PERMIT.

REV.	DATE	DESCRIPTION
1	08/27/2021	BUILDING DEPARTMENT REVISIONS



MARIETTA HWY & I-575
5068 MARIETTA HIGHWAY
CANTON, GA 30114

BUILDING EXTERIOR
ELEVATIONS

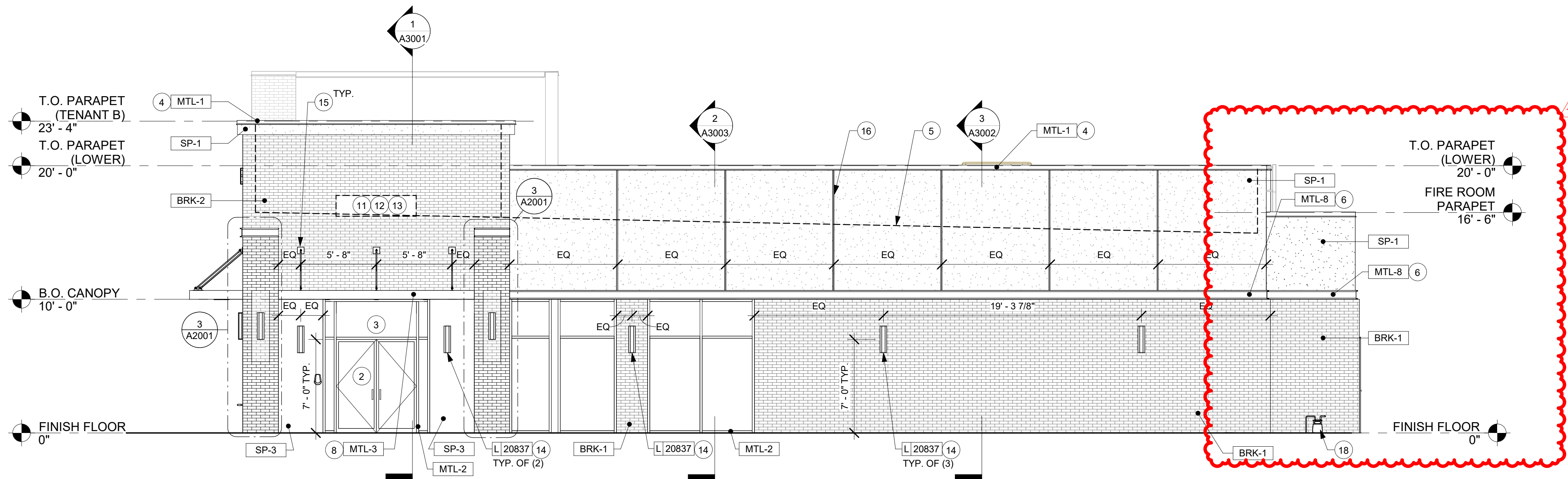
ISSUED FOR CONSTRUCTION		DATE
BID		
PROJECT MANAGER		DESIGNER
AK		DB

JOB NO.
2020379.07

A2002

2 SOUTHEAST ELEVATION

Scale: 3/16" = 1'-0"



1 NORTHEAST ELEVATION

Scale: 3/16" = 1'-0"

