

HDC Galaxy S4 Legend Disassembly Guide

Here is a step-by-step guide on how to disassemble the **HDC Galaxy S4 Legend**.

*This guide has been taken from this [source](#). Credits to **rynbrgss** (OP). **Perform at your own risks.***

Tools needed:

- Small Phillips screwdriver
- Plastic pry tool

Back case, battery, microSD card and SIM card

Remove the back case, battery, microSD card and SIM card.



Screws

Remove the 9 screws that surround the edges of the back of the phone.



Body

Insert the pry tool between the chrome and the brushed style sections of the phone. Take care not to use too much force or push too far as this could damage some of the ribbon cables, situated mostly towards the top of the phone.



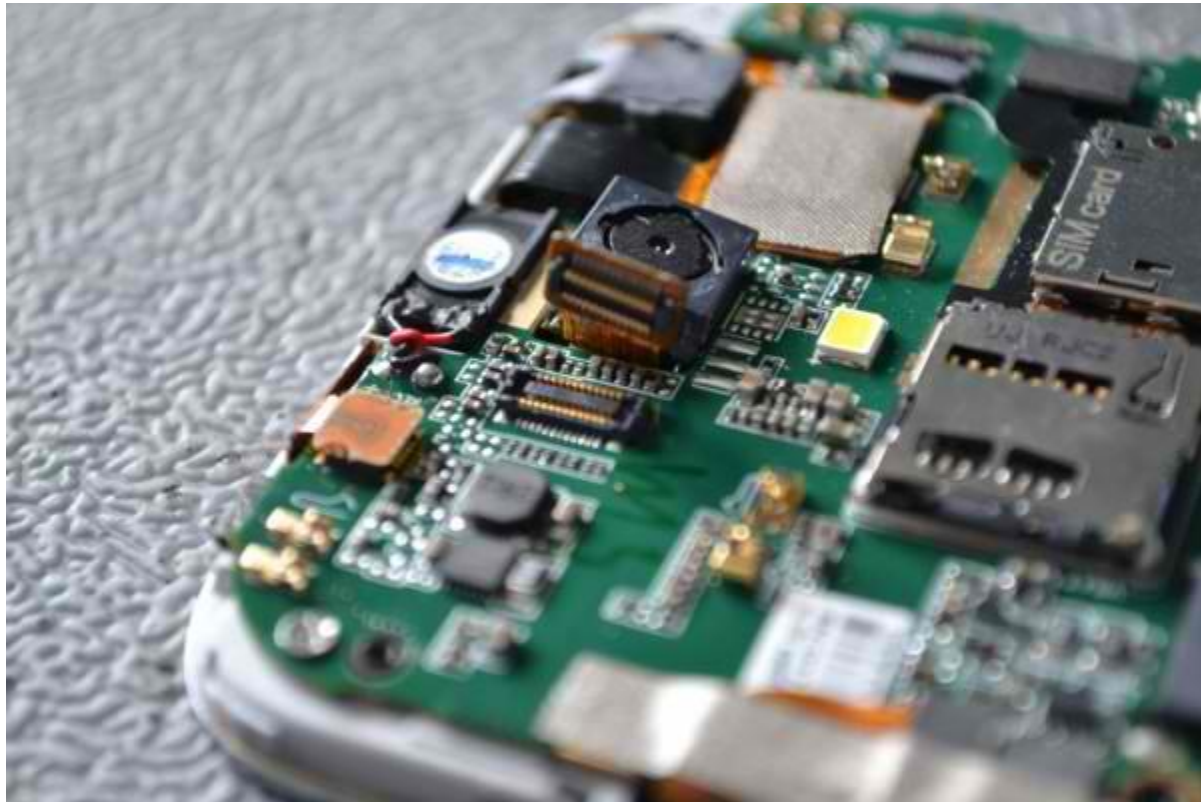
Board

You'll be left with two parts. The grey piece you just removed will have the ribbon antennas for wifi and cellular signal attached, as well as the loudspeaker and the camera lens and flash diffuser. The board is now also exposed.



Camera

To remove the camera, using the plectrum to carefully unplug the ribbon cable. The main camera unit can then be lifted out, but be aware that it is held down by some tape so be aware that a small amount of force may be required.



SIM and microSD card slots

Now using the same method unplug the small black ribbon cable that is attached to the SIM and microSD card slots.



Card slots

The card slots are held in with a little glue, and these can now be removed.



Board

To remove the board, first undo the 2 screws located in opposite corners that hold it down. Make a note of their location as it is easy to confuse which holes to put them in. Then, remove this small strip of tape, being VERY careful not to tear the ribbon cables beneath.



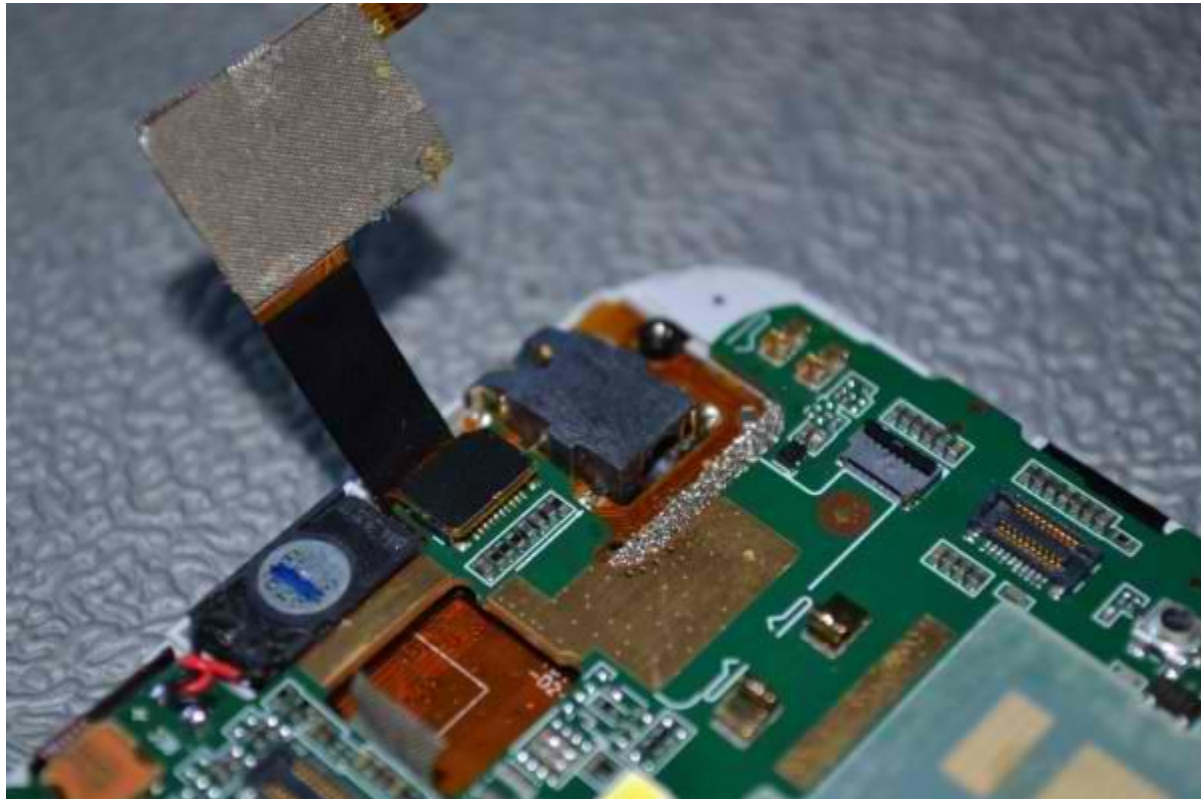
Cable/Flex

The bottom cable is a data cable that links to the bottom board and the top cable is the screen cable.



Socket

Just above the socket for the SIM and microSD card slots is another socket. This has a small, black, hinged plastic tab that you must lift until it is 90degrees to the board. You can then slowly slide out the ribbon cable from the socket. Underneath this cable is another plug type socket. Unplug this.



Antenna cable

Another antenna cable can now be removed. This can be quite stiff but be very careful not to dent the metal on the connections and also be aware that it is possible to pull the socket itself from the board.



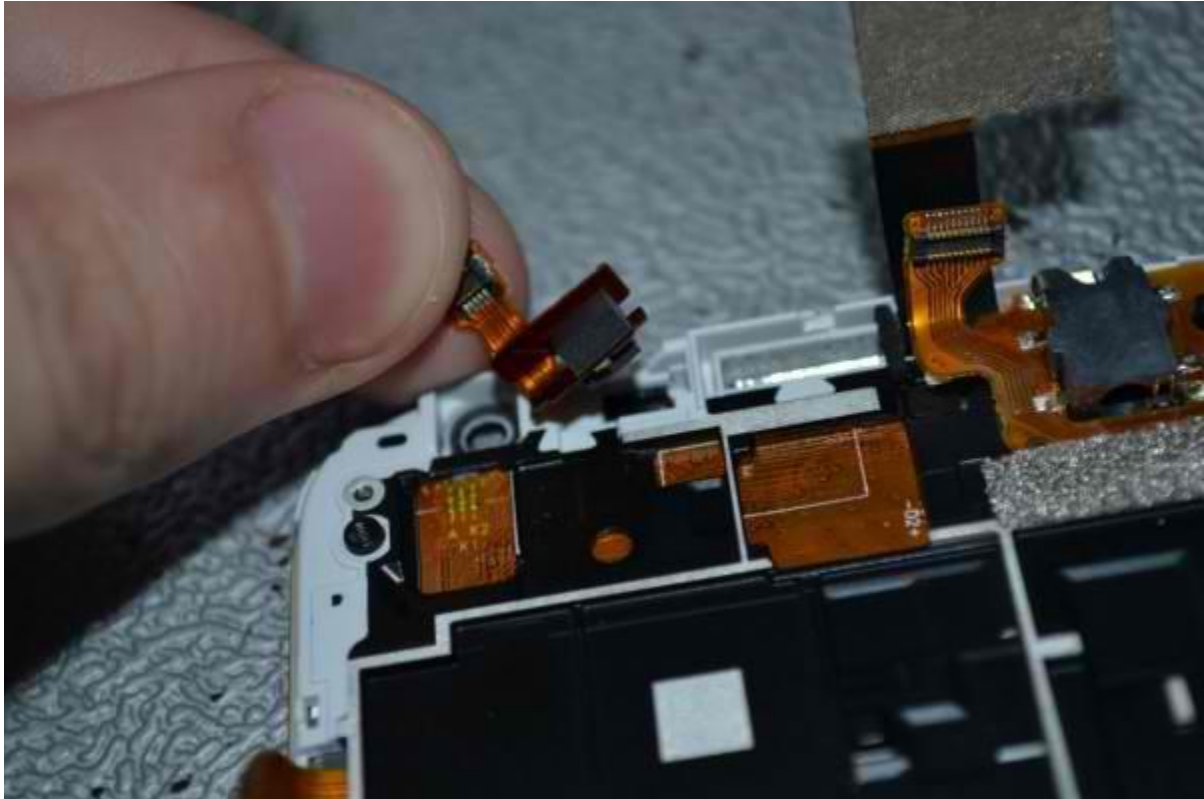
Lifting the board

After unplugging another small ribbon cable located on the top edge of the phone, the board can now be lifted. Lift the board as smoothly as possible, making sure to not tear any of the ribbon cables.



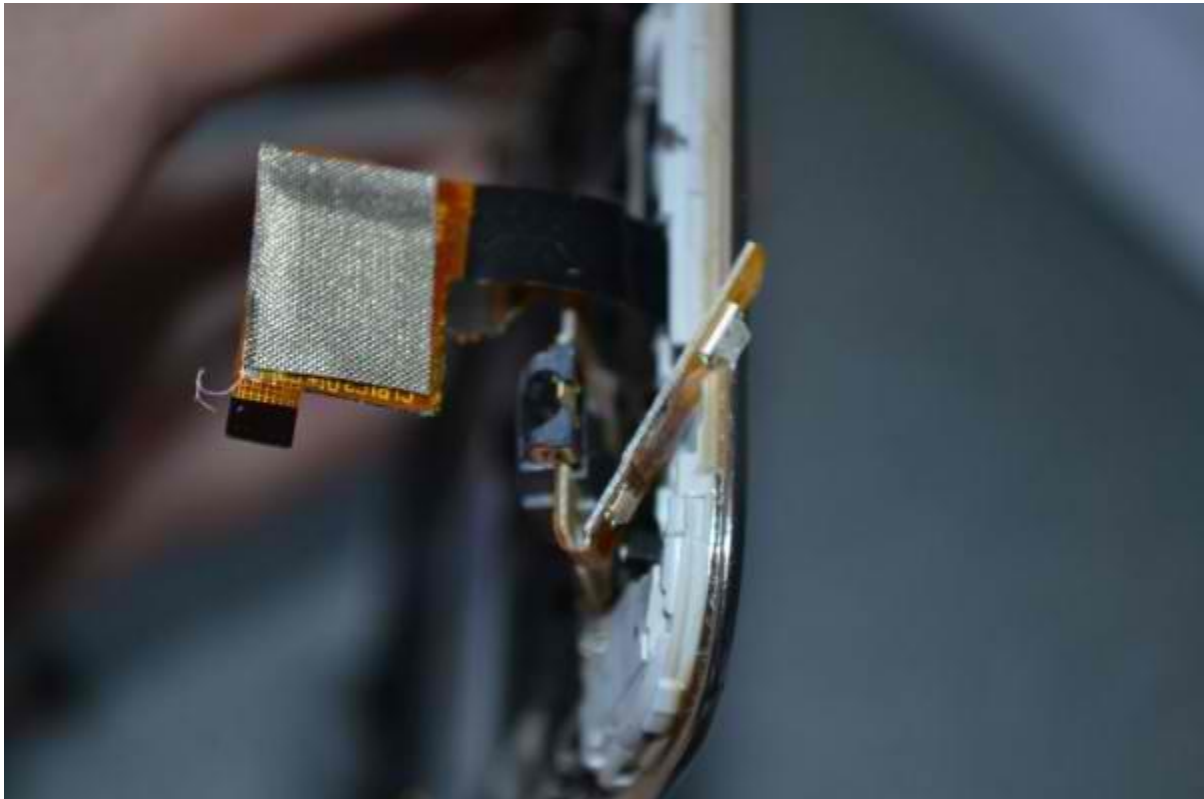
Sensor

To remove the first infrared sensor and light sensor, simply pull it vertically out from the casing of the phone.



Headphone jack

Just underneath the top of the headphone jack is a small indent in the white plastic. Use this to remove the headphone jack, but be careful not to apply too much force as joined by another thin ribbon cable is the LED and second infrared sensor. This may take some slight wriggling to remove as it is all held in with a small glue.



Ribbon cable

Unplug the ribbon cable from the bottom left hand side of the board.



Metal antenna

The other end of the metal antenna cable can now be unplugged. Being careful of the components underneath and the round thing (microphone?) the board should now only be held in by a couple of strips of tape and a little glue.



Original Guide by ***rynbrgss*** from XDA Forums.

Converted to PDF by Hideki of www.techideki.com