



PANDA EXPRESS, INC.
1683 Walnut Grove Ave.
Rosemead, California
91770
Telephone: 626.799.9898
Facsimile: 626.372.8288

All ideas, designs, arrangement and plans indicated or represented by this drawing are the property of Panda Express Inc. and were created for use on this specific project. None of these ideas, designs, arrangements or plans may be used by or disclosed to any person, firm, or corporation without the written permission of Panda Express Inc.

REVISIONS:

ISSUE DATE:

1st	PERMIT SET	10-5-18
2nd	BID SET	11-20-18

DRAWN BY:

PANDA PROJECT #: S8-19-D6462
ARCH PROJECT #: 18044.013



Khckloverarchitect
10955 LOWELL AVENUE, SUITE 700
OVERLAND PARK, KS 66210
ph: 913.649.8181 • fx: 913.649.1275

PANDA EXPRESS

TRUE WARM & WELCOME 2200
Conestoga Pkwy & Historical Trail
Shepherdsville, KY, 40165

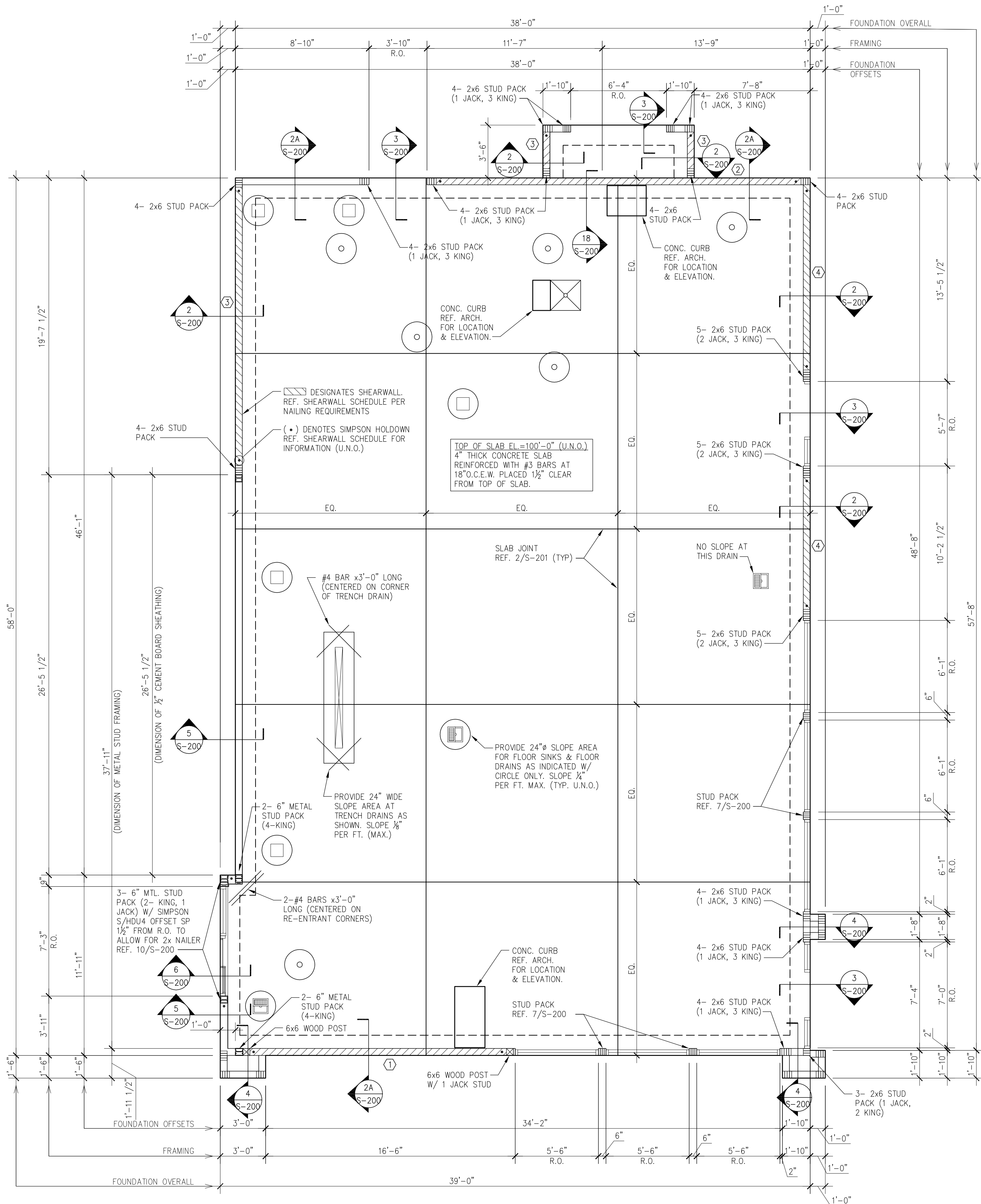


**BRITT PETERS
AND
ASSOCIATES**
INC.
consulting engineers
101 Falls Park Drive
Suite 601
Greenville, SC 29601
(864) 271-8869
(864) 233-5140 Fax
www.brittpeters.com
BPA Job No. 181059

S-100

FOUNDATION PLAN

TRUE WARM & WELCOME 2200



PLAN NOTES

- REF. SHEET S-000 FOR STRUCTURAL NOTES AND SPECIAL INSPECTIONS.
- REF. 3/S-201 FOR TYPICAL PIPE AND TRENCH DETAIL AS REQUIRED.
- REF. 4/S-201 FOR TYPICAL SILL PLATE BOLT DETAIL AS REQUIRED.
- REF. 5/S-201 FOR TYPICAL STEP FOOTING DETAIL AS REQUIRED.
- REF. 6/S-201 FOR TYPICAL GRADE BEAM STIRRUP DETAIL AS REQUIRED.
- REF. 7/S-201 FOR TYPICAL REINFORCING BAR DETAIL AS REQUIRED.
- REF. 8/S-201 FOR TYPICAL CORNER BAR DETAIL AS REQUIRED.
- REF. 17/S-200 FOR TYPICAL NON BEARING WALL CONNECTION AT SLAB AS REQUIRED.
- REF. 3/S-301 FOR TYPICAL FRAMING NOTCHES DETAIL AS REQUIRED.
- REF. 4/S-301 FOR TYPICAL WALL FRAMING DETAILS AS REQUIRED.
- REF. 11/S-200 FOR TYPICAL TRASH ENCLOSURE DETAIL AS REQUIRED.
- REF. 9/S-201 FOR TYPICAL CURB DETAIL AS REQUIRED.
- REF. 15/S-200 FOR TYPICAL LIGHT POLE BASE DETAIL AS REQUIRED.
- REF. 12/S-200 AND 16/S-200 FOR TYPICAL UMBRELLA FOOTING AS REQUIRED.
- REF. 10/S-201 FOR TYPICAL TRENCH DRAIN DETAIL AS REQUIRED.
- REF. 11/S-201 FOR TYPICAL DRAIN DETAIL AS REQUIRED.
- COORDINATE WITH ARCHITECTURAL, MECHANICAL AND PLUMBING DRAWINGS FOR LOCATIONS OF ALL DEPRESSIONS, CURBS, DRAINS, ETC. IN FLOOR SLAB.

SHEARWALL SCHEDULE

TYPE	NAIL SPACING	HOLDOWN	ANCHOR BOLTS
①	10d @ 6" B.S.	HDU14-SDS2.5	5/8" @ 18" O.C.
②	10d @ 4" O.C.	HDU8-SDS2.5	5/8" @ 24" O.C.
③	10d @ 6" O.C.	HDU8-SDS2.5	5/8" @ 32" O.C.
④	10d @ 6" O.C.	HDU8-SDS2.5	5/8" @ 32" O.C.

(X) - DESIGNATES SHEARWALL TYPE

NOTES:

- USE 10d COMMON NAILS.
- NAIL PANEL FACES @ 12" O.C.
- USE 1/2" PLYWOOD.
- STAGGER PLYWOOD JOINT AND SILL PLATE NAILING.
- FRAMING MEMBERS OR BLOCKING SHALL BE PROVIDED AT THE EDGES OF ALL SHEETS IN SHEARWALLS.
- REFER TO 9/S-200 FOR HOLD DOWN ANCHOR EMBEDMENT.
- HOLD DOWN ANCHORS MUST BE TIED IN PLACE PRIOR TO FOUNDATION INSPECTION.
- B.S. DENOTES SHEATHING BOTH SIDES OF WALL

FOUNDATION NOTES

1

Scale: NO SCALE

S-100

FOUNDATION PLAN

A

Scale: 1/4"=1'-0"

S-100

BID SET 11.20.18