

PARCEL MAP NO. 4610

BEING A RESUBDIVISION OF PARCEL 2, 3 AND 4 AS SHOWN ON THAT CERTAIN PARCEL MAP NO. 4139 FILED FEBRUARY 28, 1984, BOOK 143 OF MAPS AT PAGES 28-29, ALAMEDA COUNTY RECORDS. SCALE 1" = 100' DATE JUNE 1985

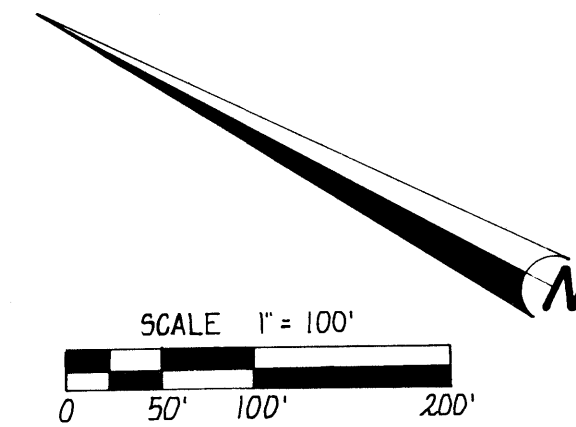
CITY OF HAYWARD COUNTY OF ALAMEDA
STATE OF CALIFORNIA

DESIGN & ENGINEERING SYSTEMS INC.

ARCHITECTS PLANNERS ENGINEERING FREMONT BRANCH OFFICE
39233 LIBERTY ST., SUITE "Y" FREMONT, CA. 94538 (415) 790-1441

BASIS OF BEARINGS

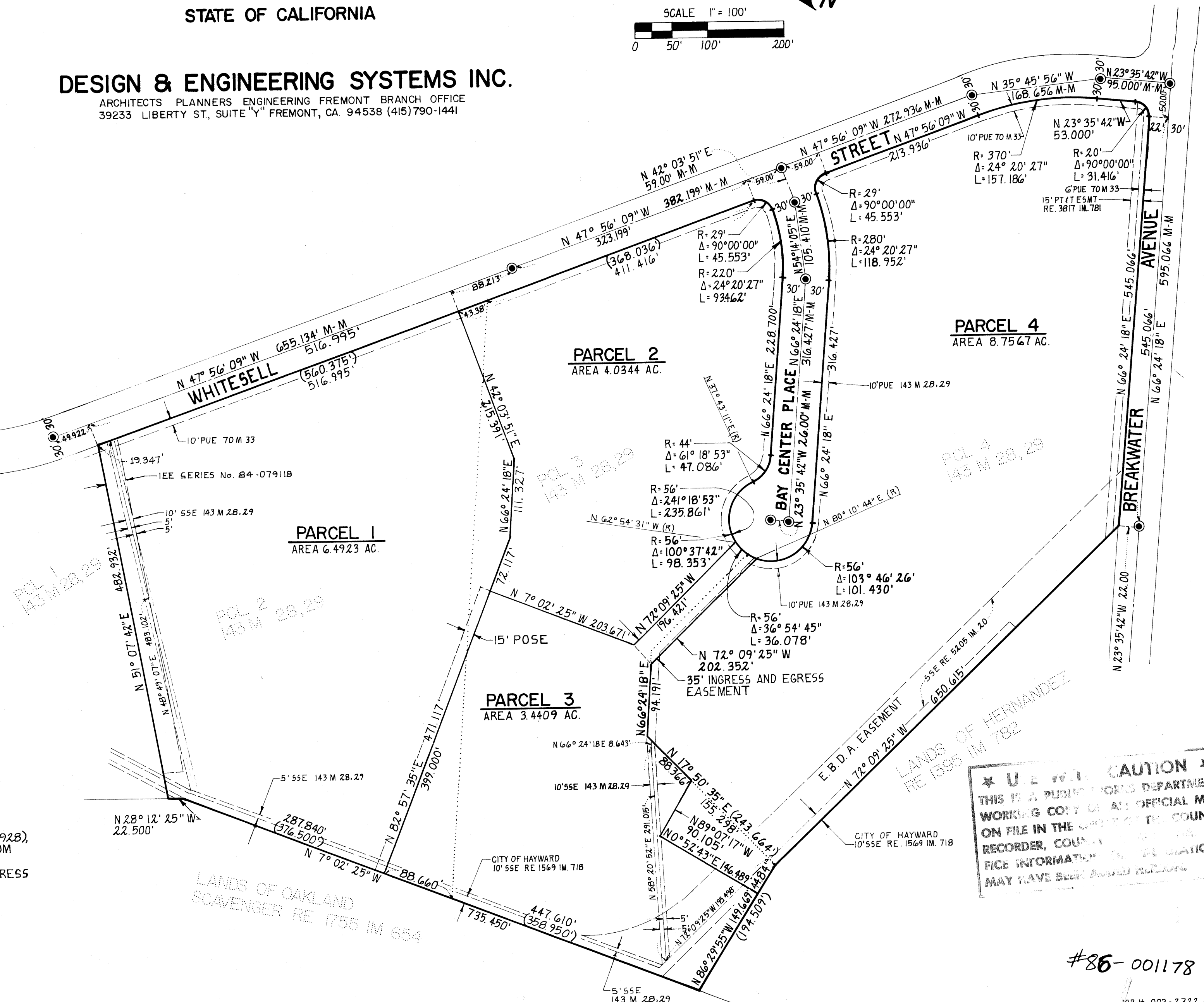
THE BEARING NORTH 47° 56' 09" WEST OF THE MONUMENT LINE OF WHITESELL STREET AS SHOWN UPON THAT CERTAIN TRACT MAP NO. 3213 RECORDED IN VOLUME 70 OF MAPS AT PAGE 33, ALAMEDA COUNTY RECORDS, WAS TAKEN AS THE BASIS OF ALL BEARINGS SHOWN HEREON.



LEGEND & NOTES

---	EXISTING PARCEL LINE
---	PARCEL LINE
---	BOUNDARY LINE
---	MONUMENT LINE
---	EASEMENT LINE
●	FOUND CITY MONUMENT PER PARCEL MAP NO. 4139
M-M	143 M 28.29
PUE	MONUMENT TO MONUMENT
SSE	PUBLIC UTILITY EASEMENT
POSE	SANITARY SEWER EASEMENT
(157.93)	PRIVATE OPEN SPACE EASEMENT
IEE	EXISTING LOT LINE DATA
	INGRESS AND EGRESS EASEMENT

- ALL DISTANCES SHOWN HEREON ARE IN FEET AND DECIMALS THEREON.
- THE AREA WITHIN THE DISTINCTIVE BORDER IS 22.7243 ACRES ±.
- AN EASEMENT IN FAVOR OF P.G. & E. EXISTS (SERIES No. 84-121928), THE EXACT LOCATION OF WHICH CANNOT BE DETERMINED FROM RECORD INFORMATION.
- WHEN TITLE TO PARCEL 2, 3 AND 4 PASSES AN EASEMENT FOR INGRESS AND EGRESS SHALL BE RESERVED AS DELINEATED HEREON.



★ U.S. DEPARTMENT OF THE INTERIOR ★
THIS IS A PUBLIC WORKS DEPARTMENT
WORKING COPY OF AN OFFICIAL MAP
ON FILE IN THE COUNTY OF ALAMEDA
RECORDS, COUNTY OF ALAMEDA
FOR INFORMATION OF THE PUBLIC
MAY HAVE BEEN AMENDED

#86-001178

PR 4610

Map for 159124

filed 1-3-86

159124