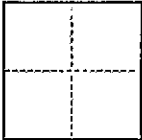


CR 93

CORNER RECORD

COUNTY OF ALAMEDA T. 3 SOUTH R. 2 WEST MOUNT DIABLO MERIDIAN CALIFORNIA  
CORNER TYPE: GOV'T. CORNER ☐ MEANDER ☐ RANCHO ☐ CONTROL ☐ OTHER ☒  
CORNER IDENTIFICATION — DATE OF VISIT JANUARY 19 91



CORNER — LEFT AS FOUND ☐ FOUND AND TAGGED ☐ REESTABLISHED OBLITERATED CORNER ☐ REBUILT ☐

PHYSICAL DESCRIPTION OF CORNER FOUND; EVIDENCE AND METHOD USED TO IDENTIFY OR REESTABLISH

FOUND MONUMENTS IN HEYER AVENUE AS NOTED,  
PER TRACT 3718 (96 MAPS 67-69)

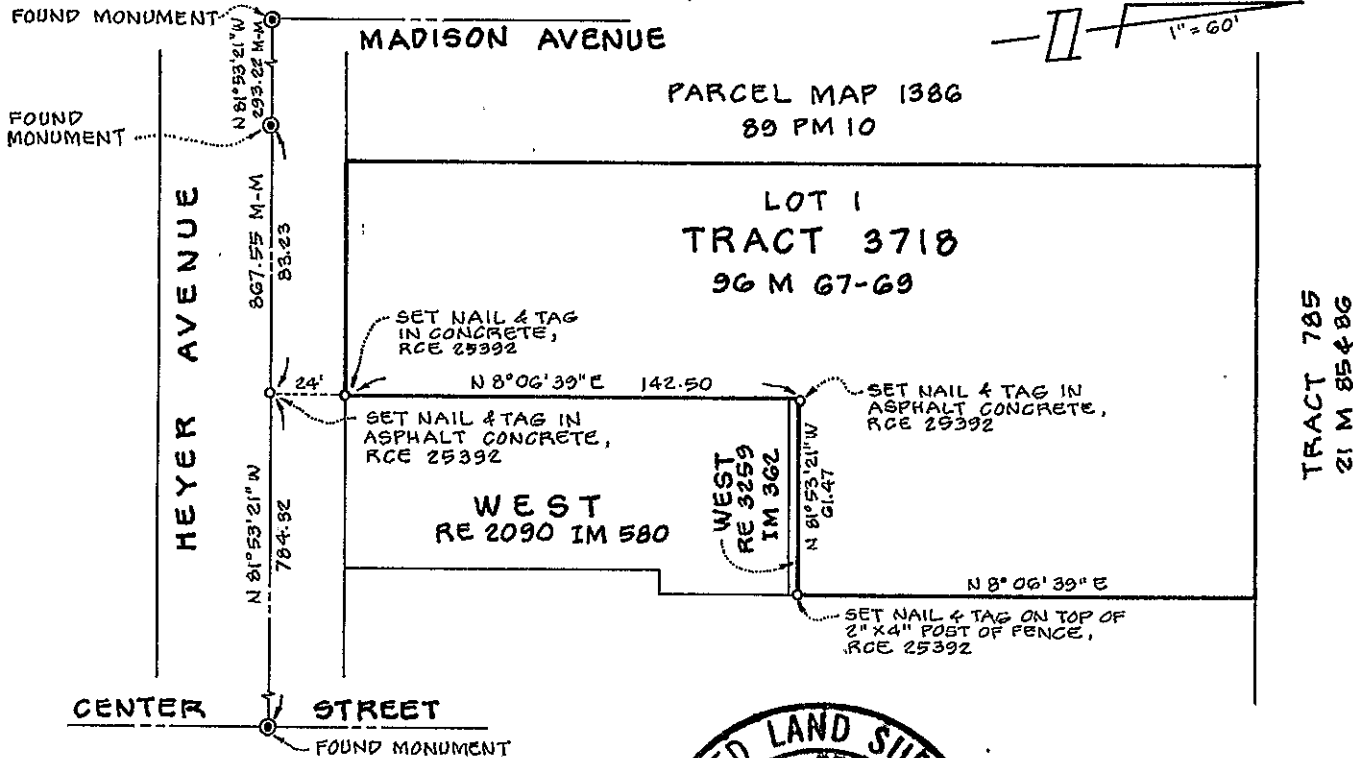
PHYSICAL DESCRIPTION OF MONUMENTS REBUILT OR PERPETUATED

SET NAIL & TAG, RCE 25392,  
AS SHOWN ON SKETCH BELOW

CALIFORNIA COORDINATE SYSTEM ORDER: FIRST ☐ SECOND ☐ THIRD ☐  
STATIONS USED: NGS (USC & GS) ☐ STATE ☐ COUNTY ☐ OTHER ☐ STATION \_\_\_\_\_ STATION \_\_\_\_\_  
ZONE \_\_\_\_\_ ELEVATION \_\_\_\_\_ NORTHINGS (Y) \_\_\_\_\_ EASTINGS (X) \_\_\_\_\_

(Fold)

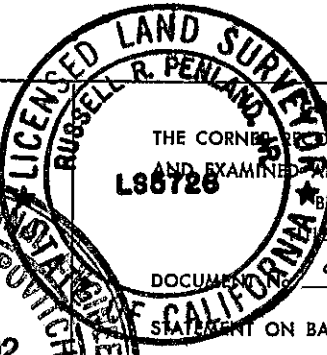
SKETCH: (Include reference tie or witness points, remarks and topo of area)



SURVEYOR'S CERTIFICATE

THIS CORNER RECORD WAS PREPARED BY ME OR UNDER MY  
DIRECTION IN CONFORMANCE WITH THE LAND SURVEYORS ACT  
ON JANUARY 31 19 91

SIGNED: Yevgen Philipovich  
R.C.E. No.: 25392



BKF JOB NO. 917004-50 JVK

COUNTY SURVEYOR'S CERTIFICATE

THE CORNER RECORD WAS RECEIVED  
AND EXAMINED AND FILED 12/5/91

Signed: Russell R. Penland  
Deputy County Surveyor

DOCUMENT NO. 91-10  
STATEMENT ON BACK OF SHEET

BK 1 C-R. PG 94

YES ☐ NO ☒