



## NUMBERING SYSTEM

Each image has a number assigned to it based on the order it appears in the set for that week. Many of these will require you to be on the path for the specified girl and making the right/wrong choices.

Some numbers may skip and be found later because at certain points in the story, there are different paths you can take. A few images will have additional notes below the image if certain choices are required to reach the peeping tom icon along the route.

**WARNING: THIS GUIDE CONTAINS SPOILERS!**  
It's not recommended you follow this guide on  
your first playthrough if spoilers are important to you!





# WEEK 5

If you are on both Connie's and Yuki's paths, it will **not** require you to call Connie first to get these three rewards, just so long as you are on Connie's path.

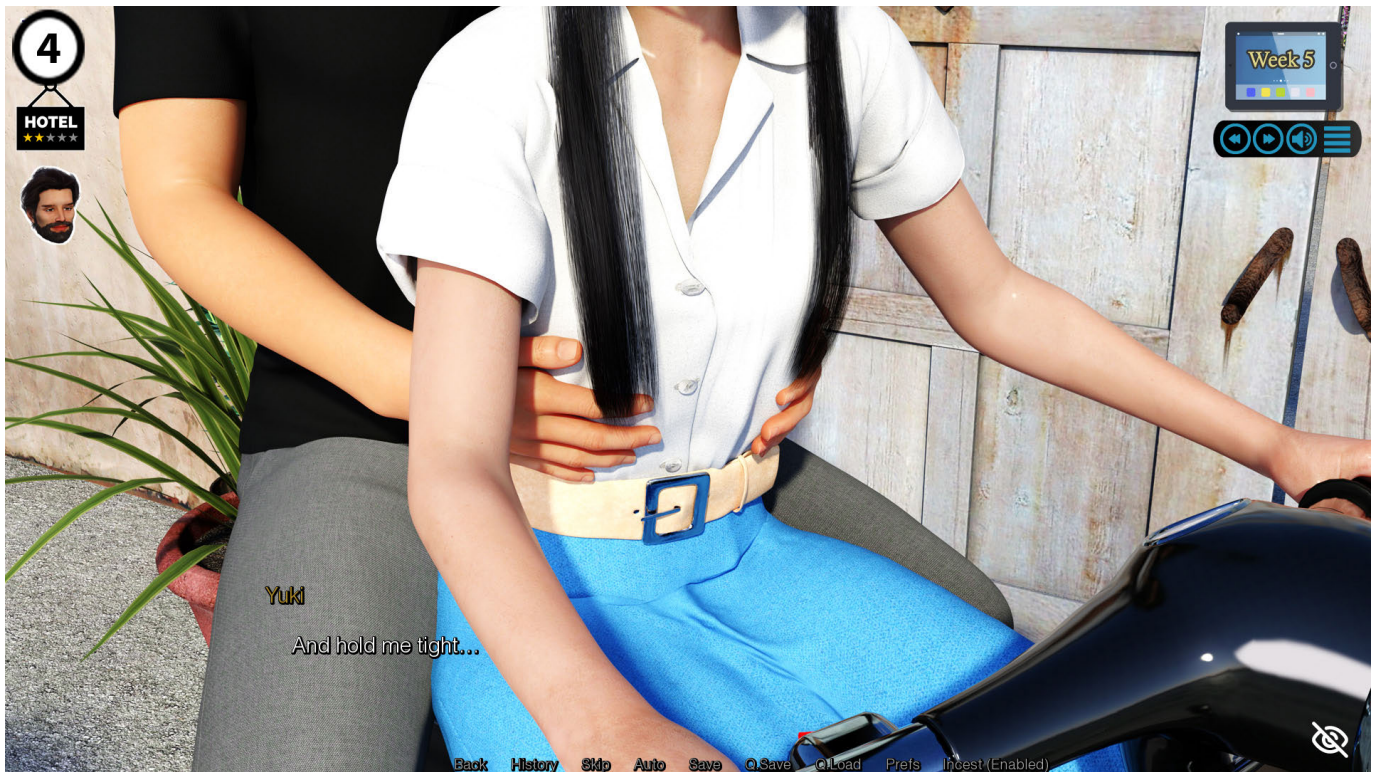


# WEEK 5

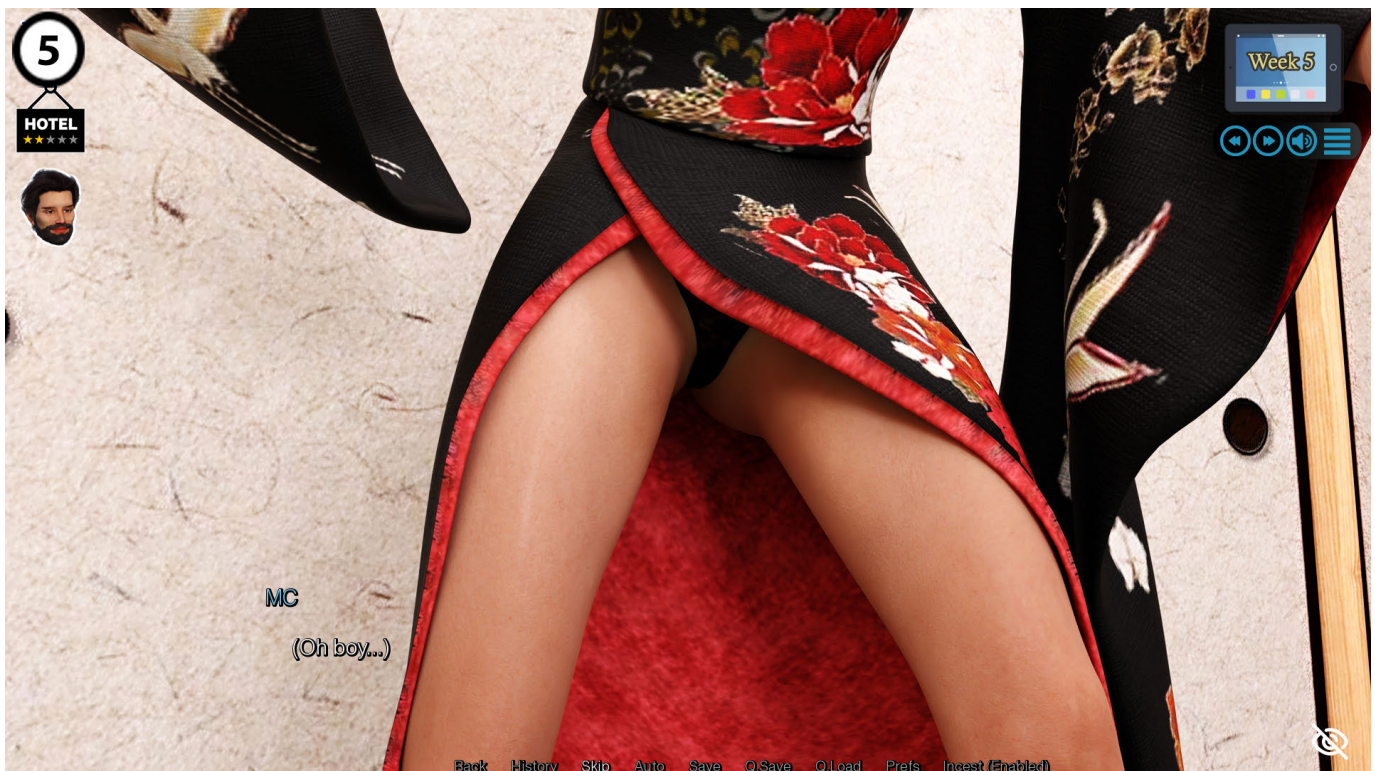




# WEEK 5

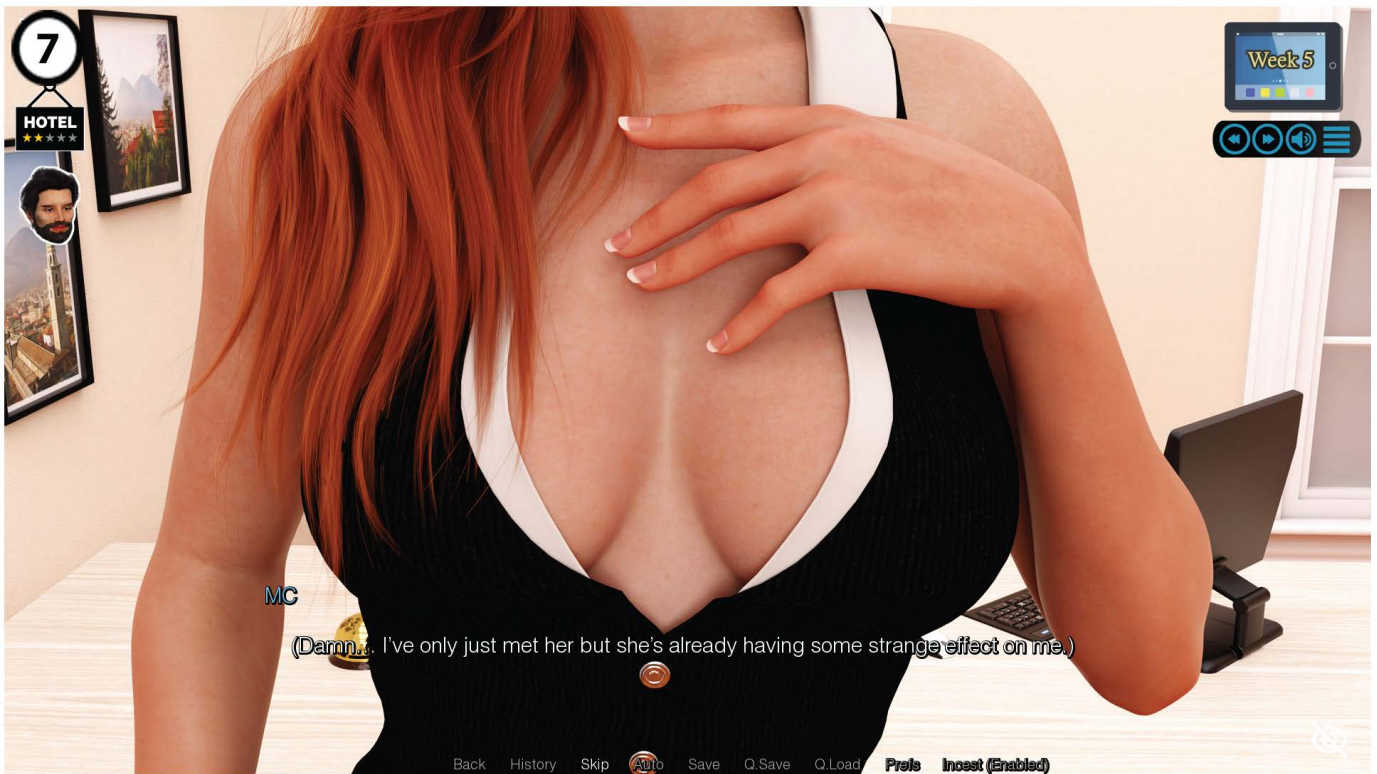
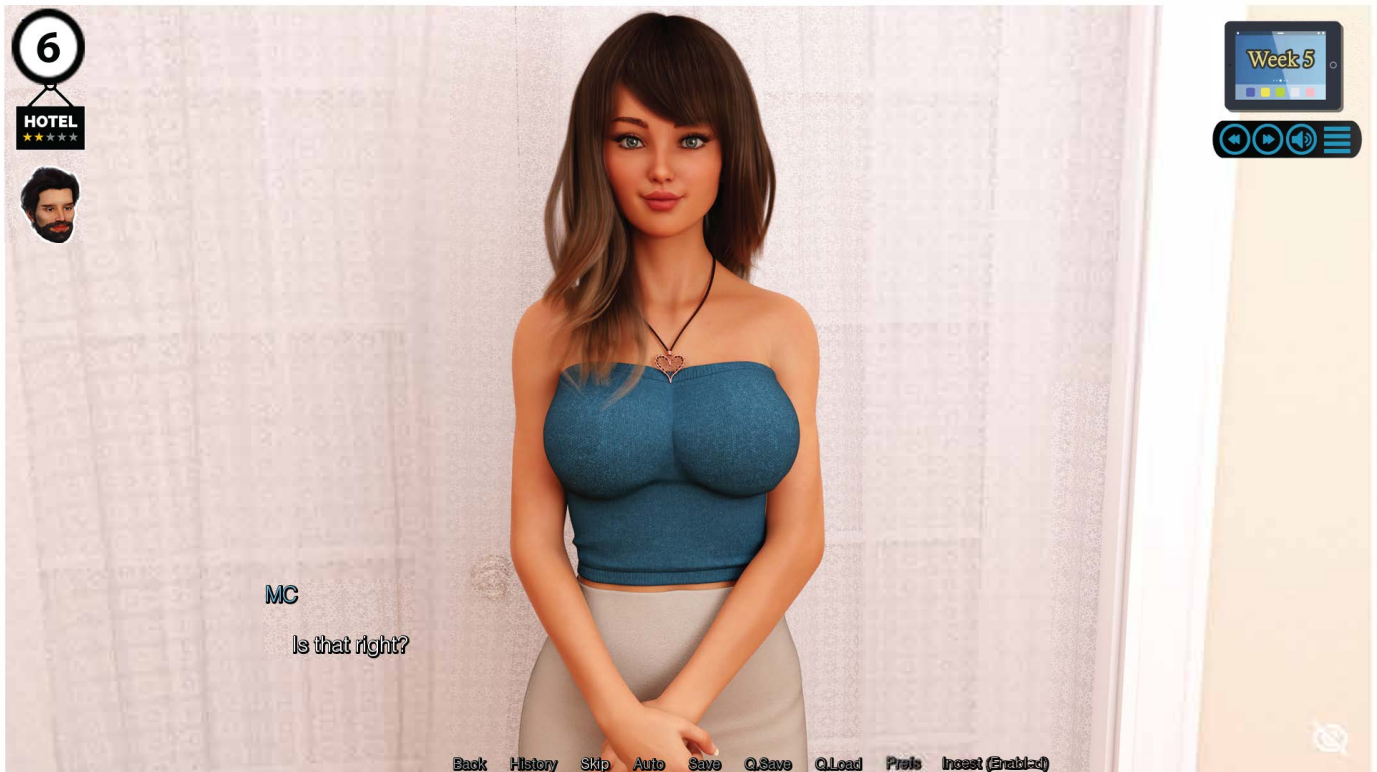


(If you are on both Connie's and Yuki's paths, this reward requires you to have called Yuki First.)

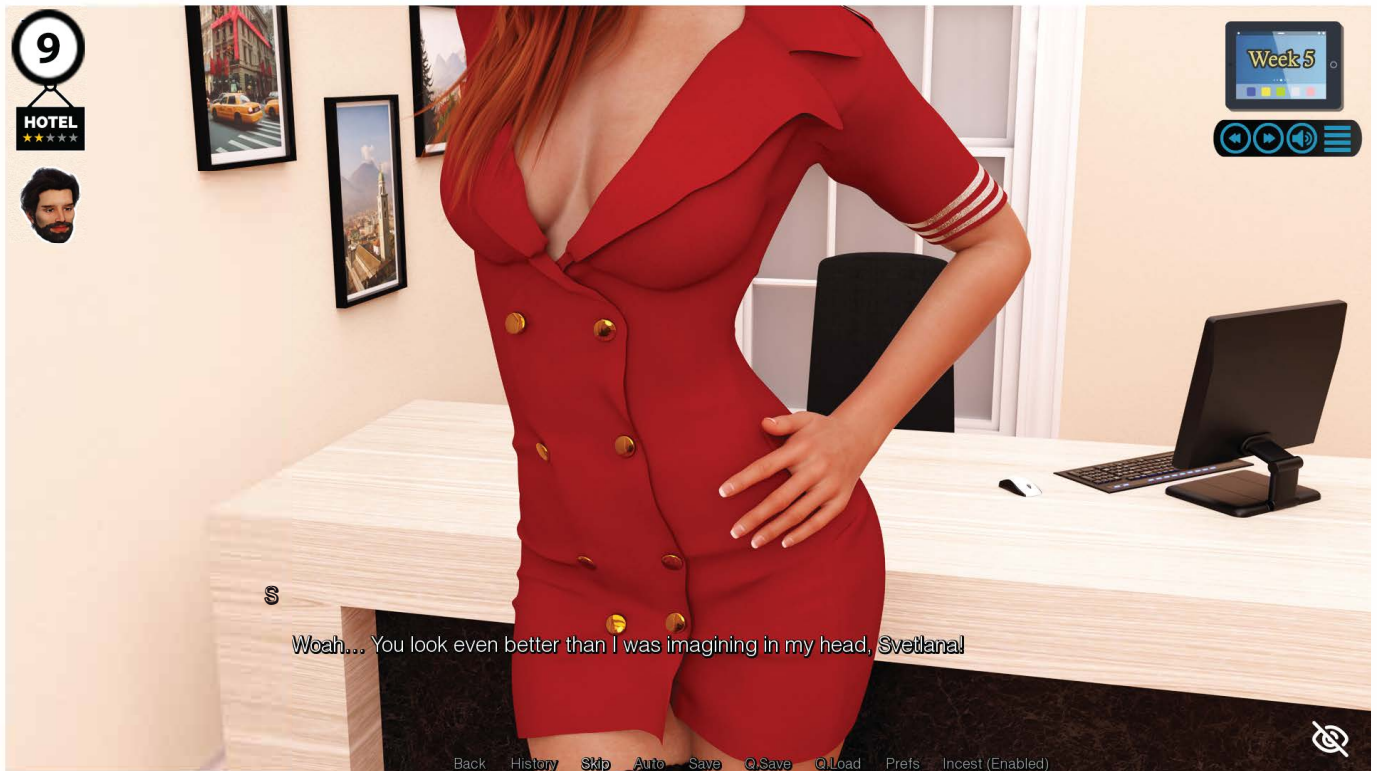




# WEEK 5



# WEEK 5





# WEEK 5



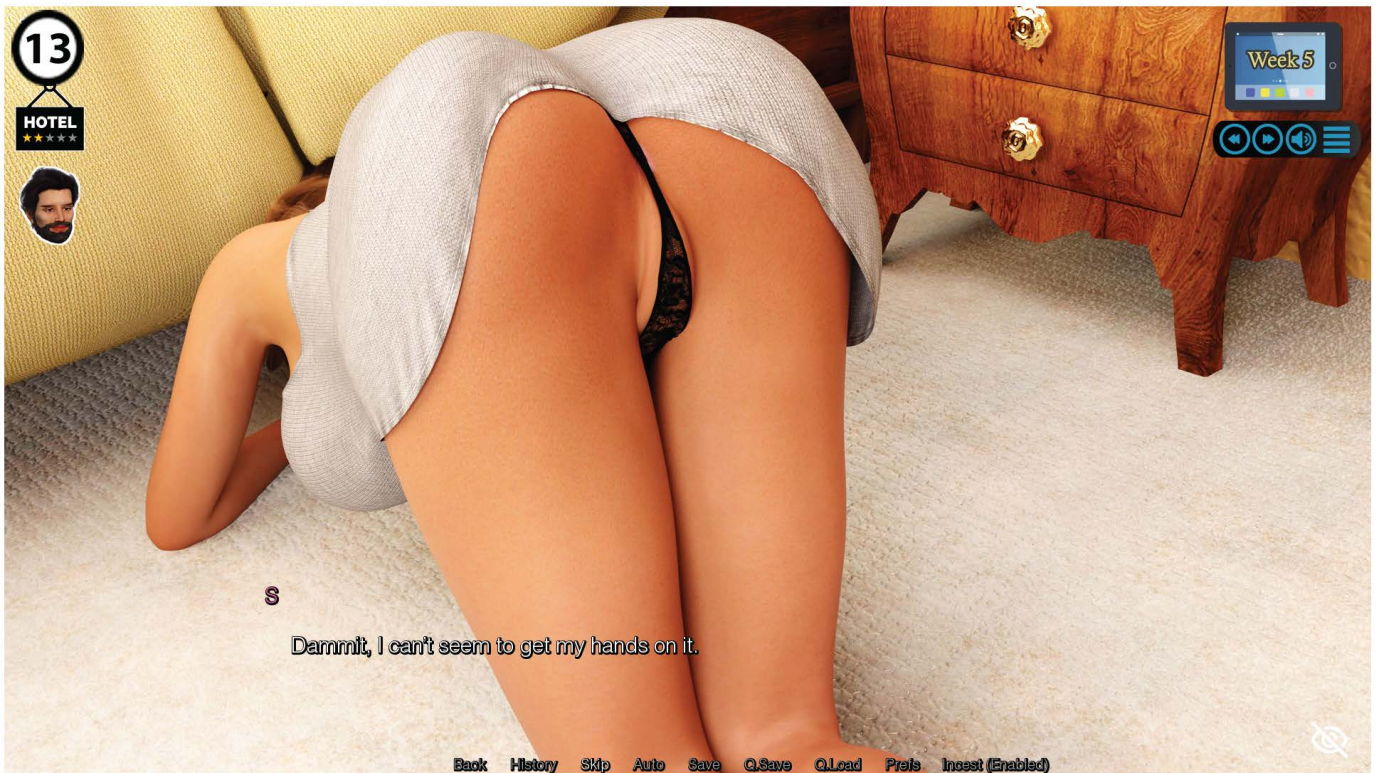
(Either selecting "Interrupt" or "Stay silent" will still lead to this reward, just at different points.)



(For this reward, you cannot be on Yuki's path and needed to select "Make promise" to Mister Roshi back in CH1, Week 4.)  
(Can also be set on the "Char. Info" for Yuki.)



# WEEK 5



# WEEK 5





# WEEK 5



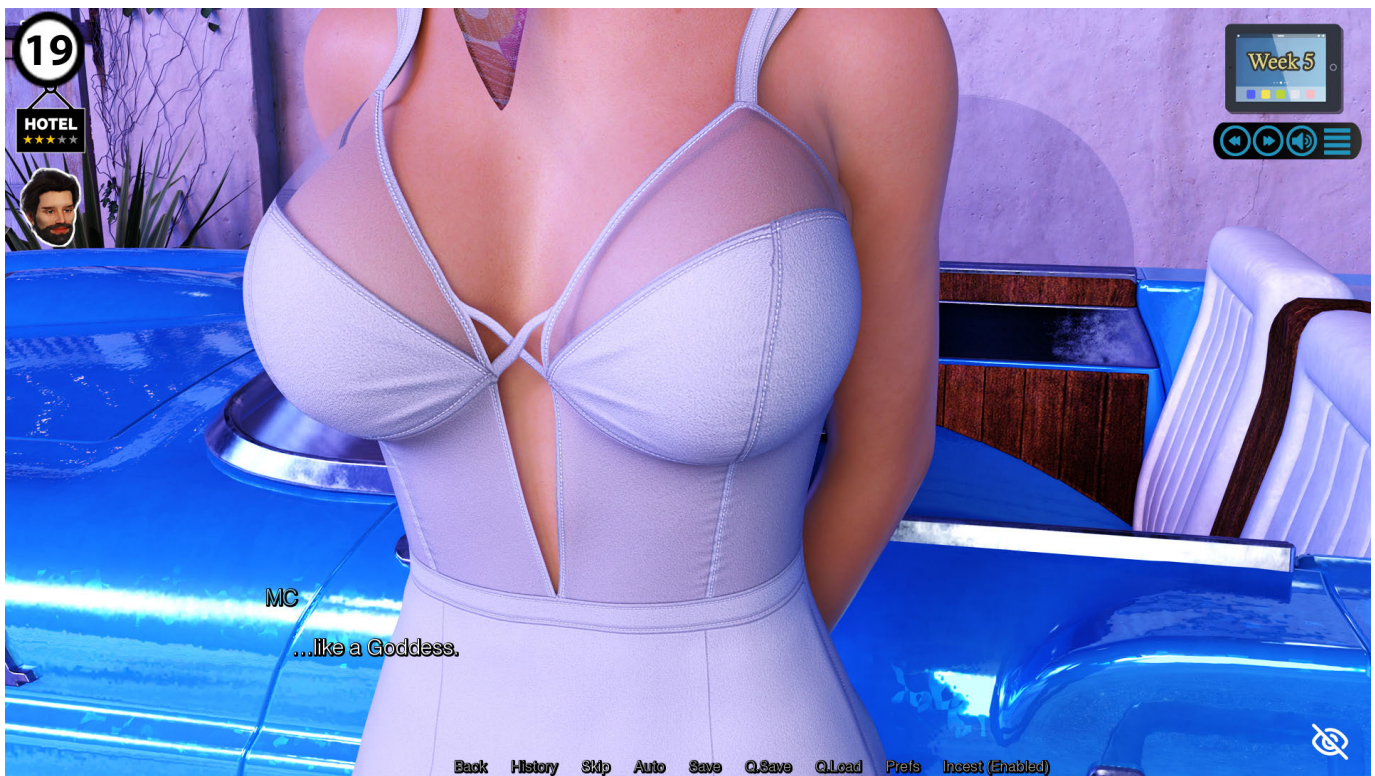


# WEEK 5





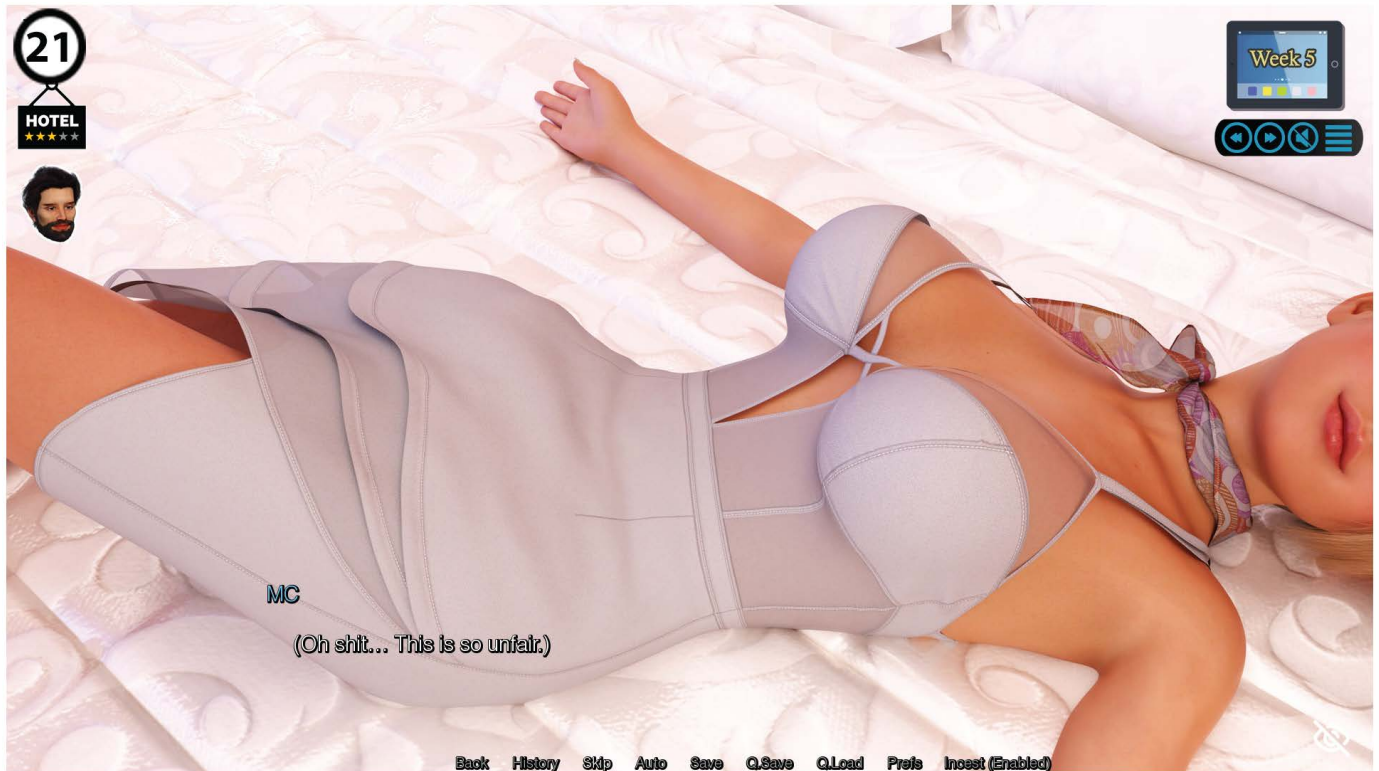
# WEEK 5



(Requires you to select "A Goddess".)

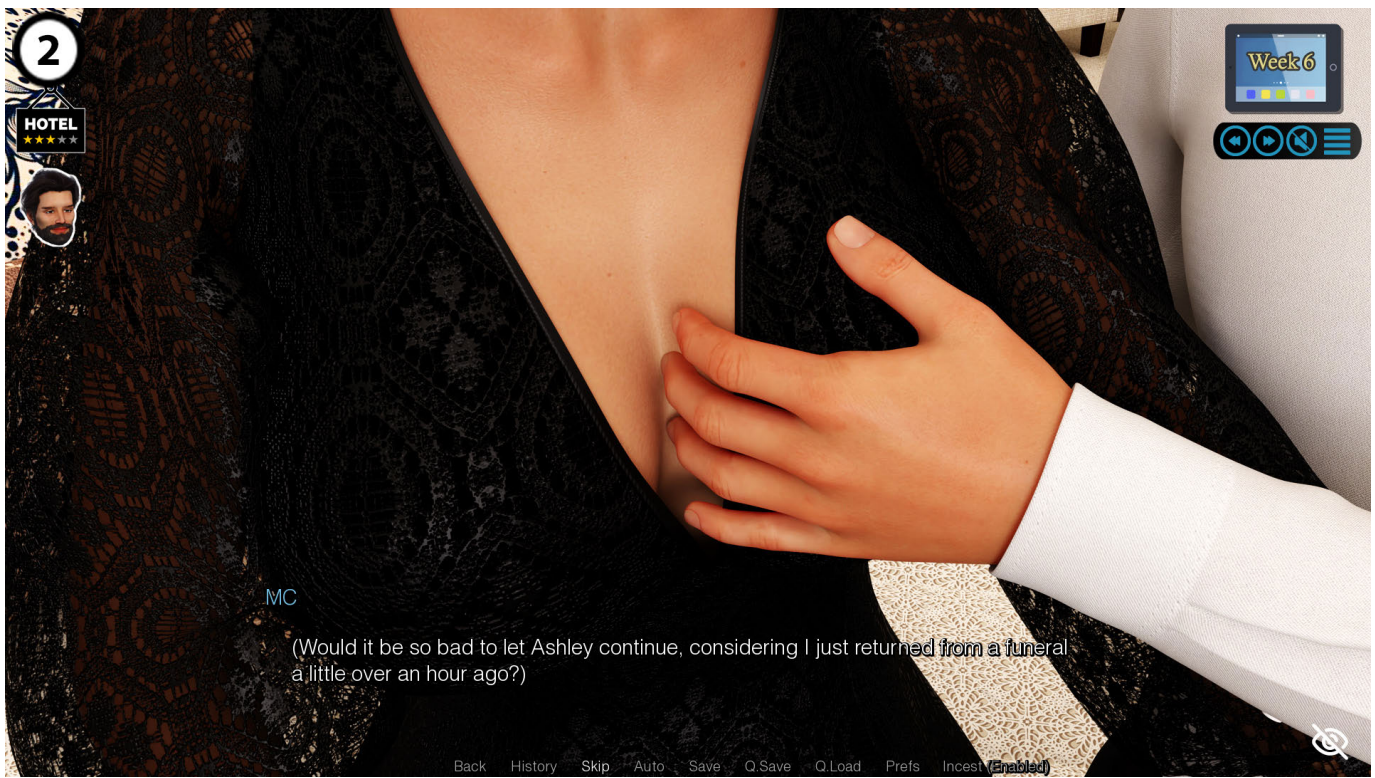
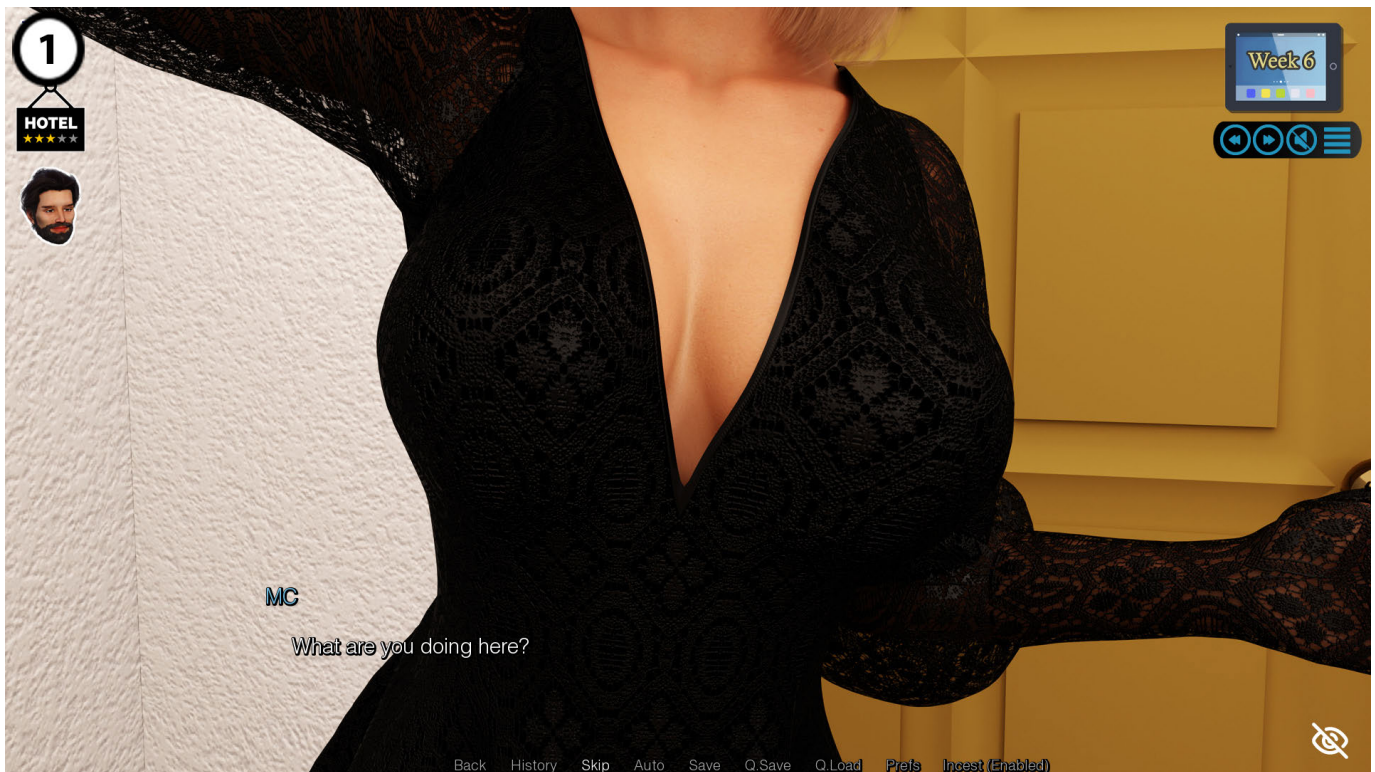


# WEEK 5





# WEEK 6



(If you are also on Shortcake's path, you would need to have selected "Don't Ask" earlier while speaking with Shortcake.)



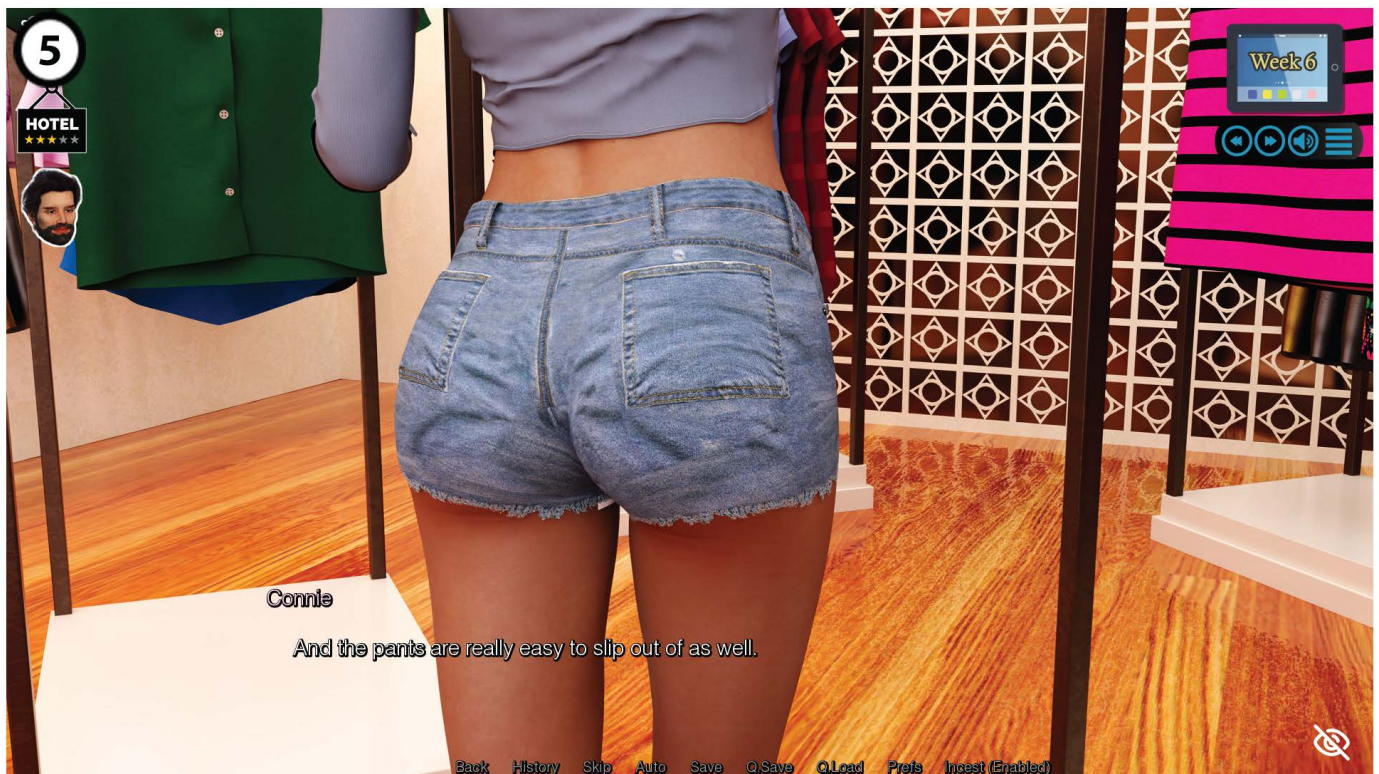
# WEEK 6



(Requires you to have selected "Suggest something" earlier, then "Kiss her", "Touch her thigh", and finally "Cup her breast".)



# WEEK 6





# WEEK 6

For these two rewards, you do need to be on Ashley's path, but if you are also on Shortcake's path, you will need have selected "Don't Ask" earlier in the day while speaking with Shortcake.





# WEEK 6

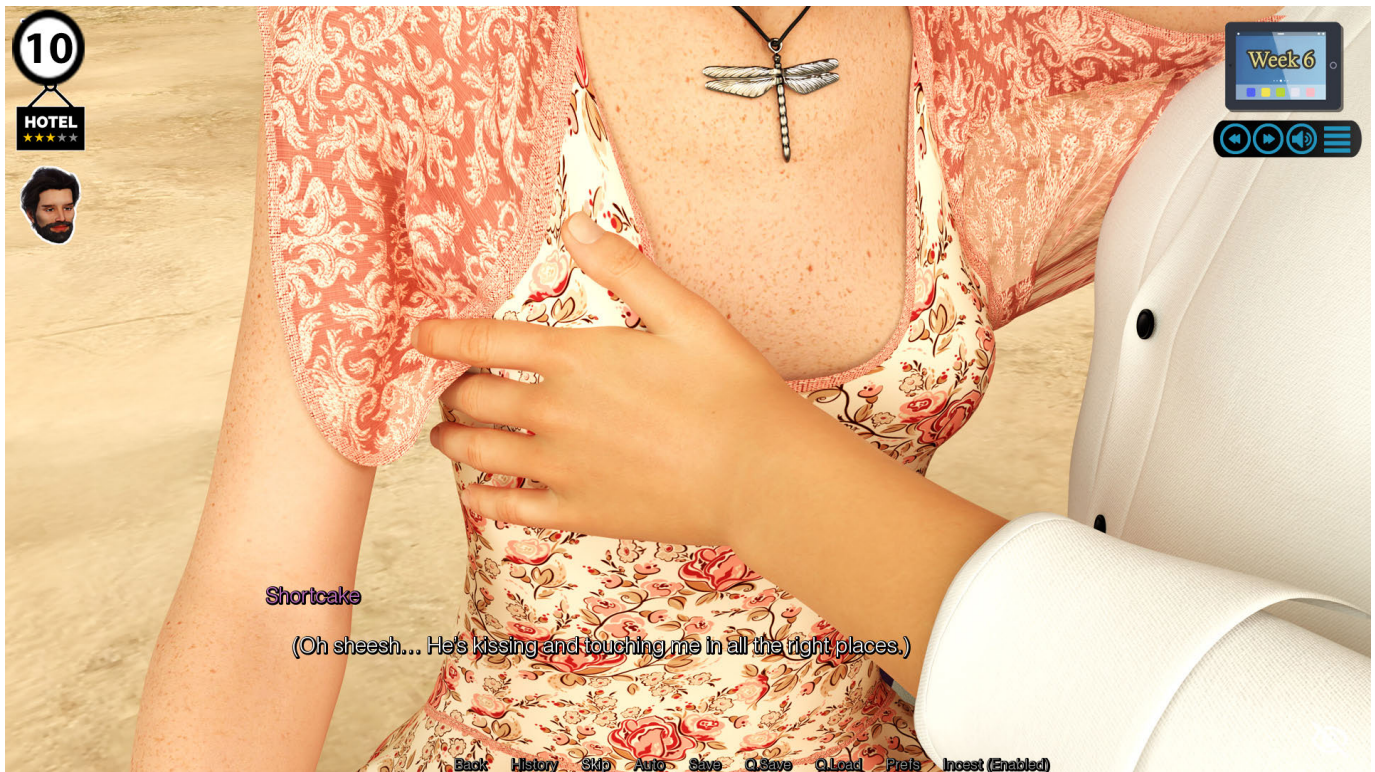


(Requires you to "Kiss her".)





# WEEK 6



(For this reward, you will need to be on Shortcake's path and have selected "Ask what she's doing later" earlier that day while speaking with Shortcake.)

# WEEK 6





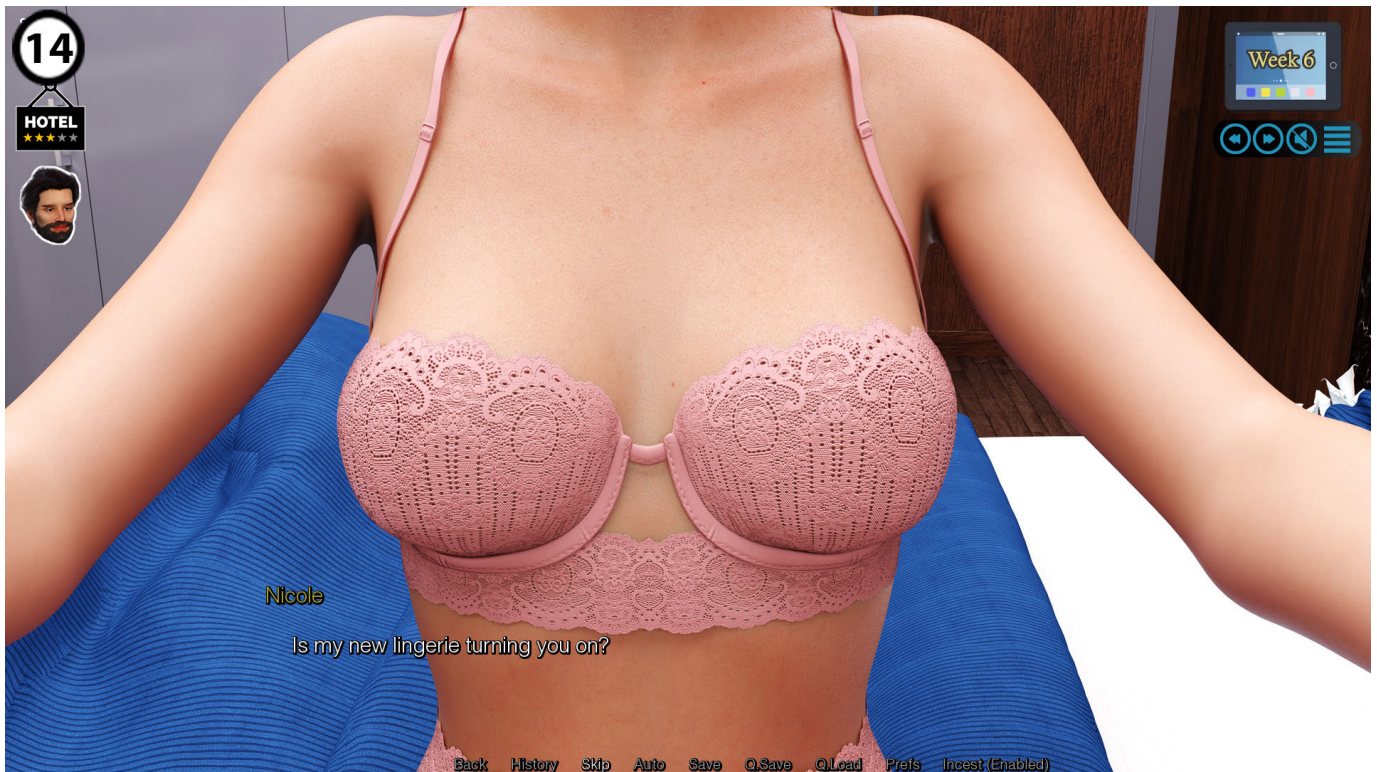
# WEEK 6

(For these two rewards, you cannot be on Yuki's path and needed to select "Make promise" to Mister Roshi back in CH1, Week 4.)  
(Can also be set on the "Char. Info" for Yuki.)





# WEEK 6

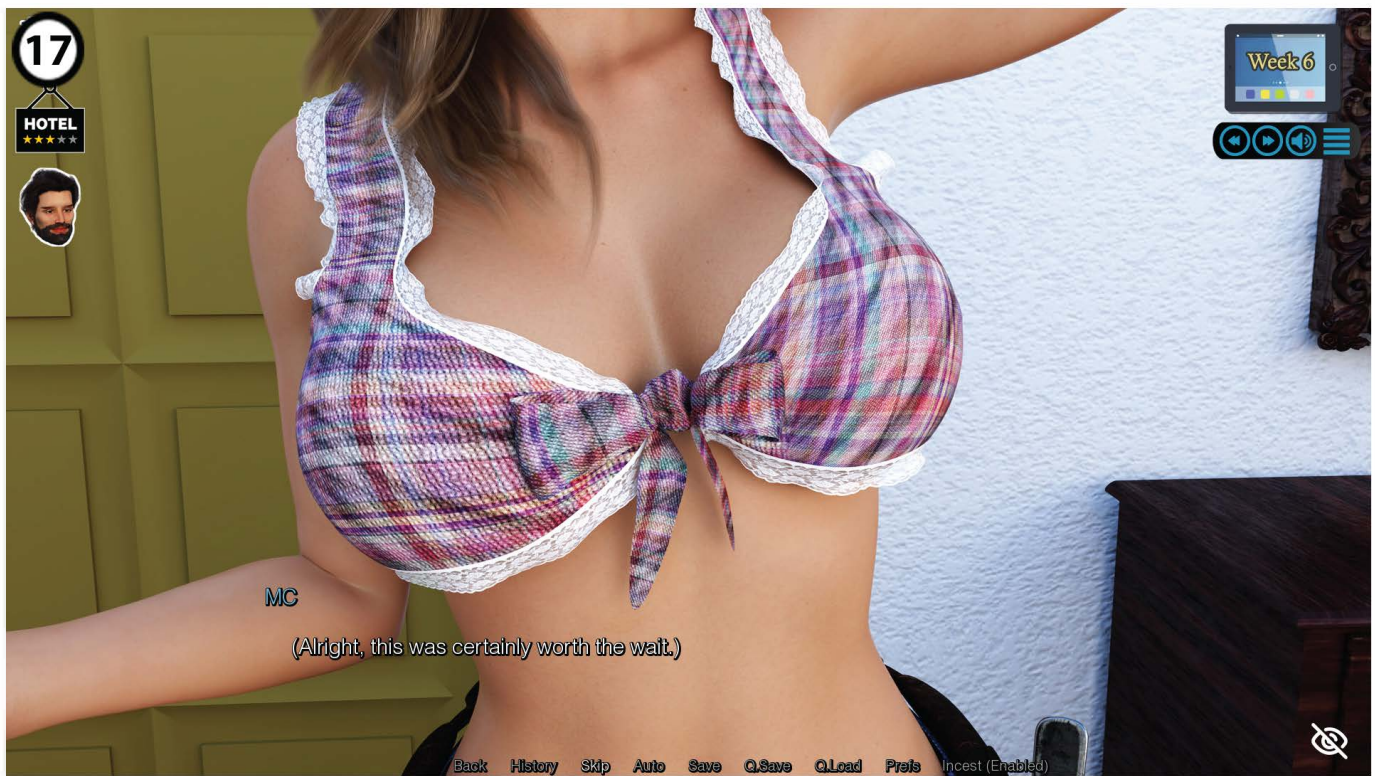
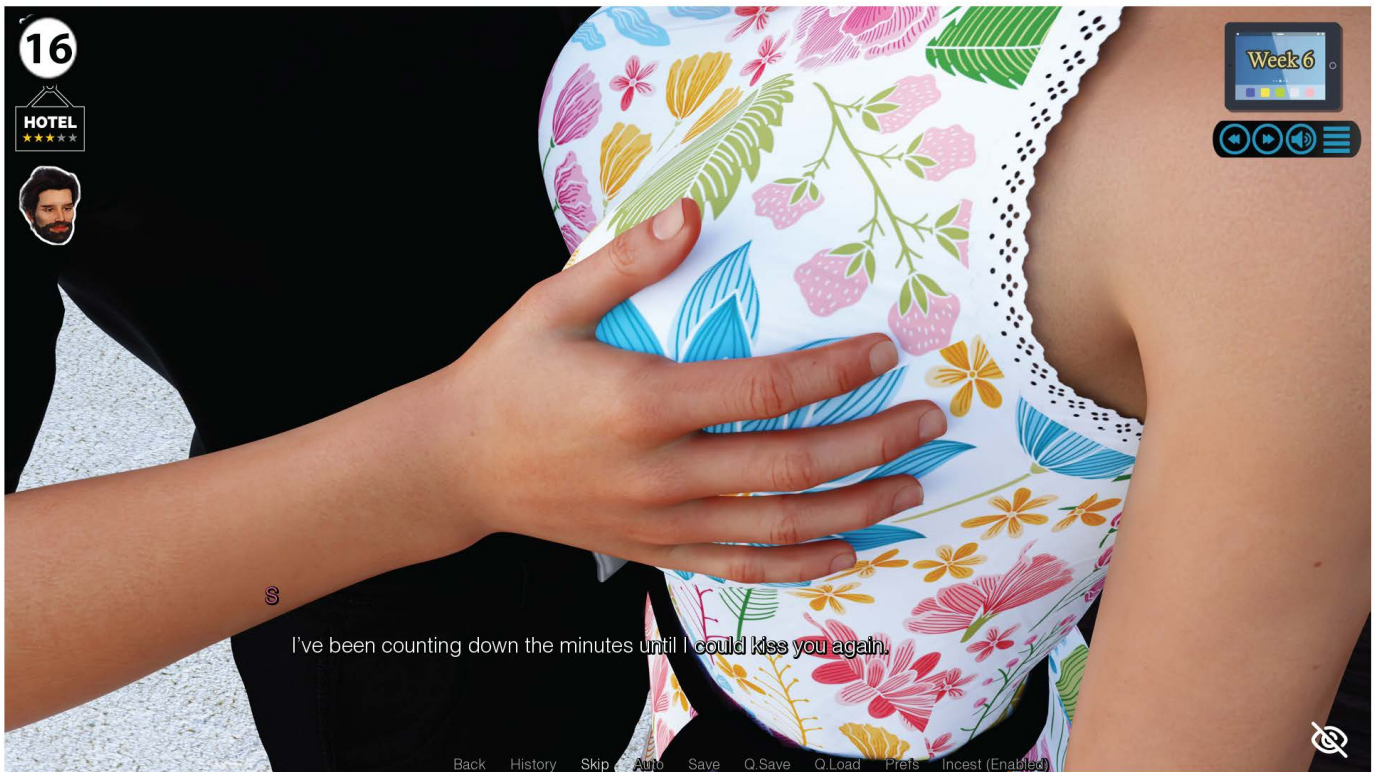


(Requires you to be in an open relationship with Nicole.)





# WEEK 6





# WEEK 6



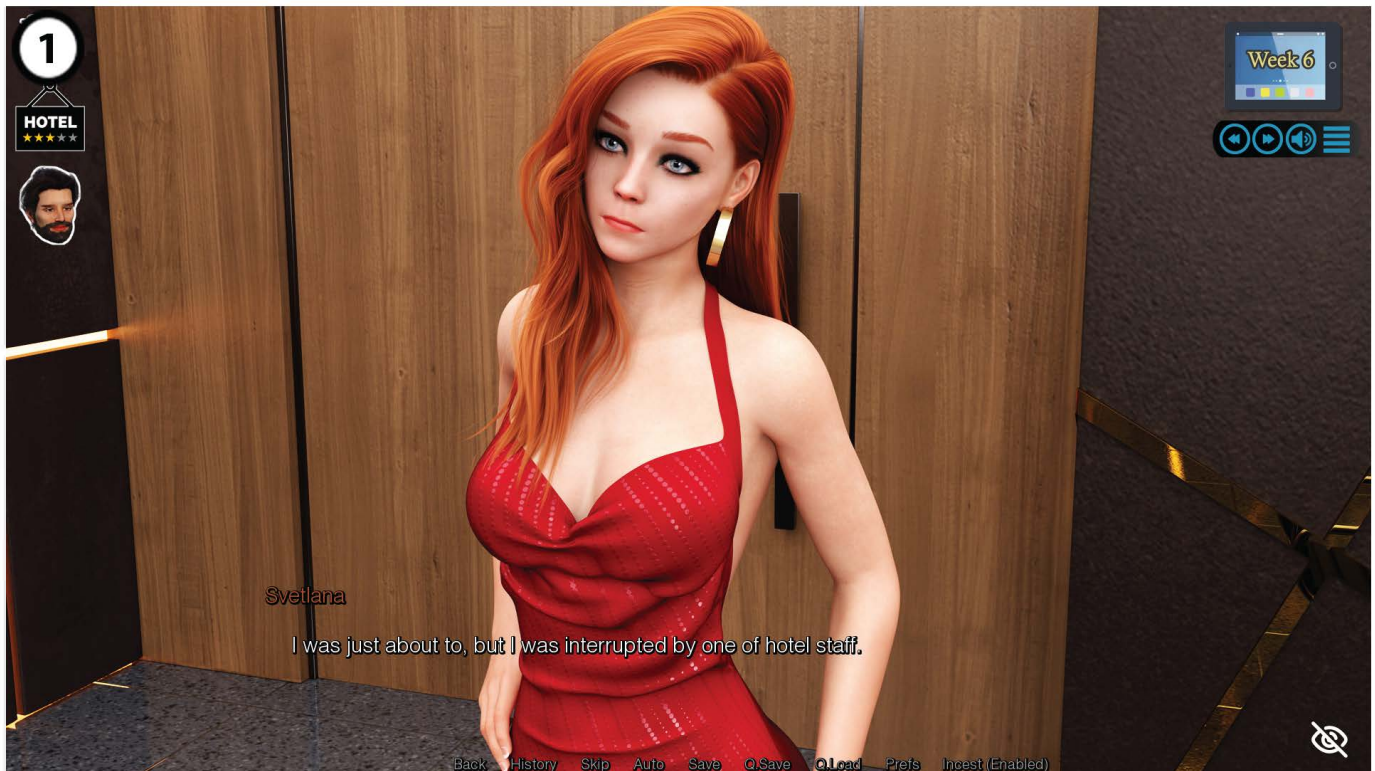


# WEEK 6





# WEEK 7





# WEEK 7

3

HOTEL  
★★★★★



4

HOTEL  
★★★★★





# WEEK 7



(Requires you to have selected "Continue the relationship" earlier.)



# WEEK 7



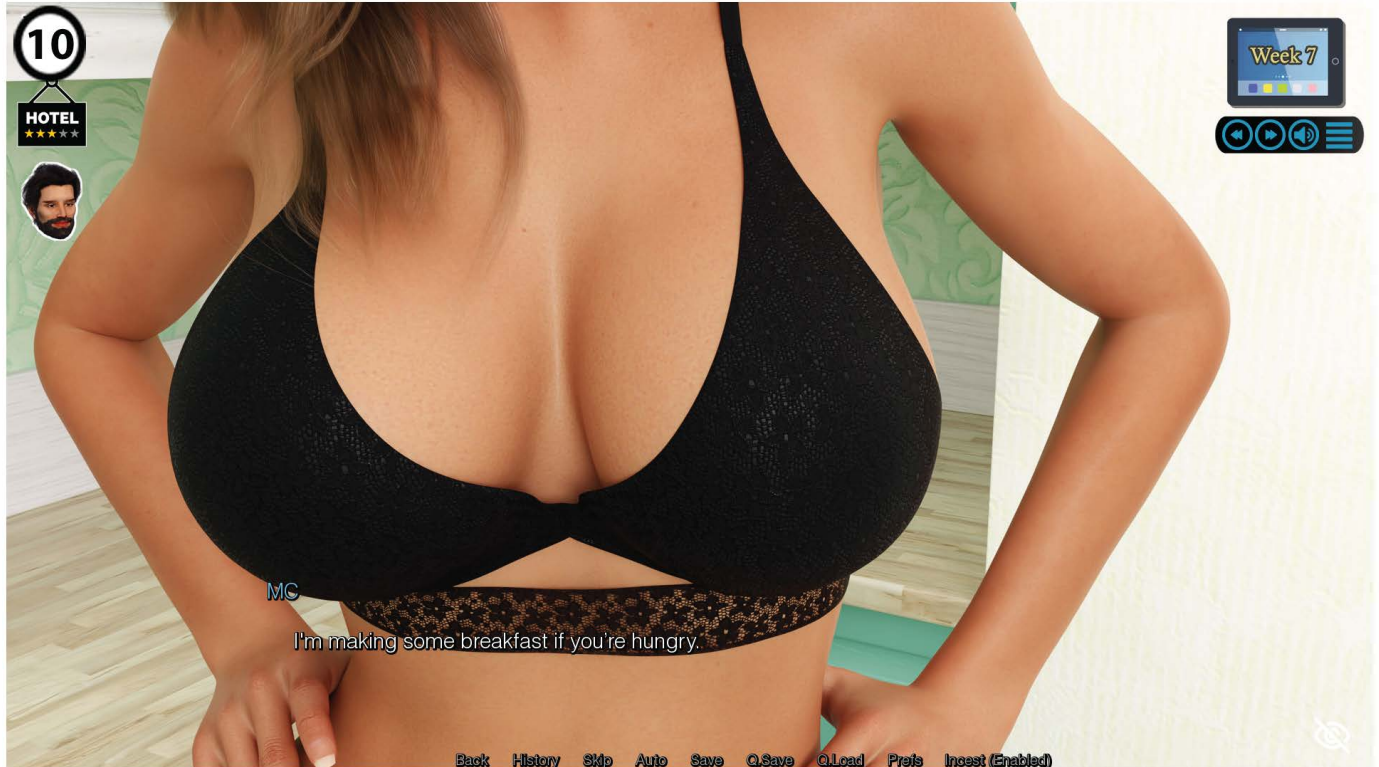
(Requires you to be on Yuki's path and selected "Going out" earlier.)



(Requires that you are not on either Yuki's or Victoria's path.)



# WEEK 7





# WEEK 7





# WEEK 7



(Requires you to select "Stay with Shortcake".)



# WEEK 7

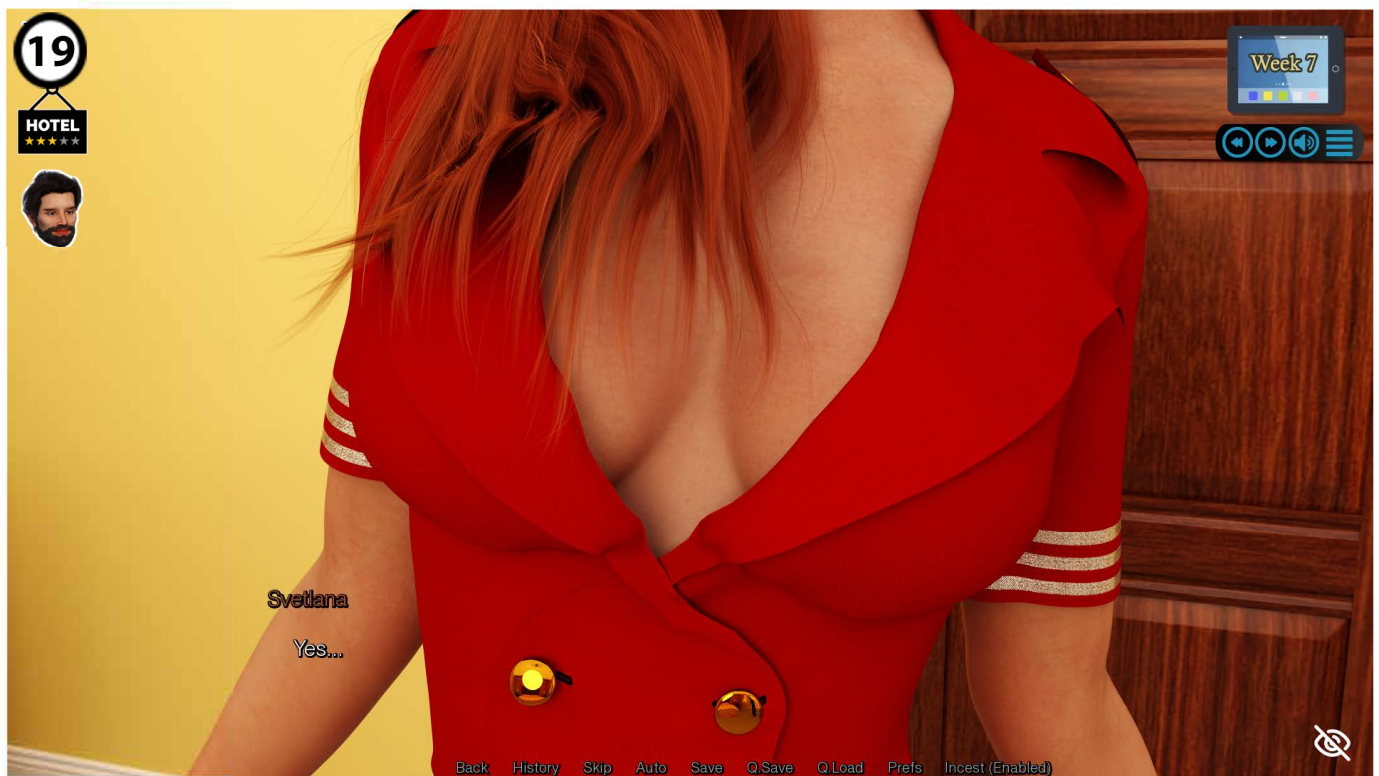
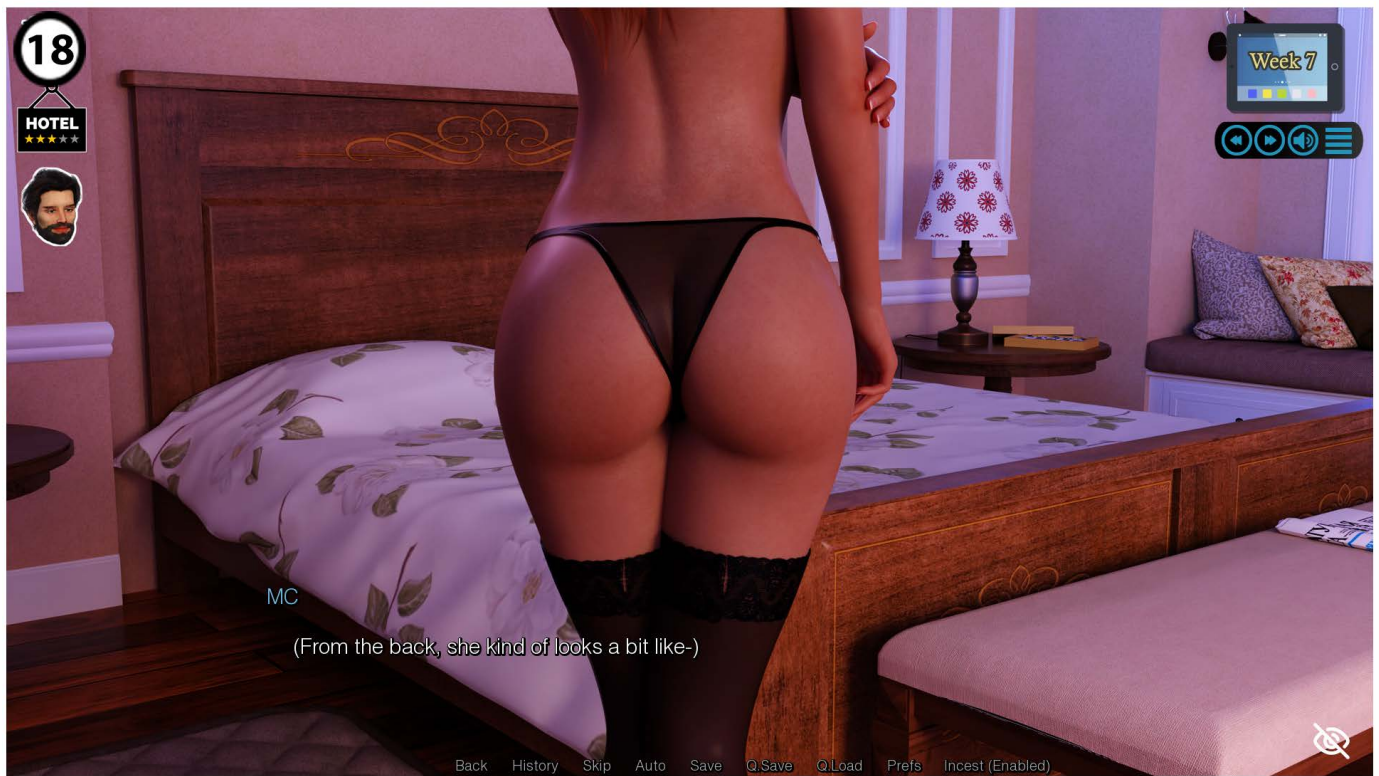


(Requires you to have selected "Stay with Shortcake" earlier.)



(Requires you to "Change Kristina's Mind".)







# WEEK 7





# WEEK 7



(The next two require you to be on both Victoria and S's path.)





# WEEK 8





# WEEK 8



(Requires you to select "Fondle her breasts".)



# WEEK 8



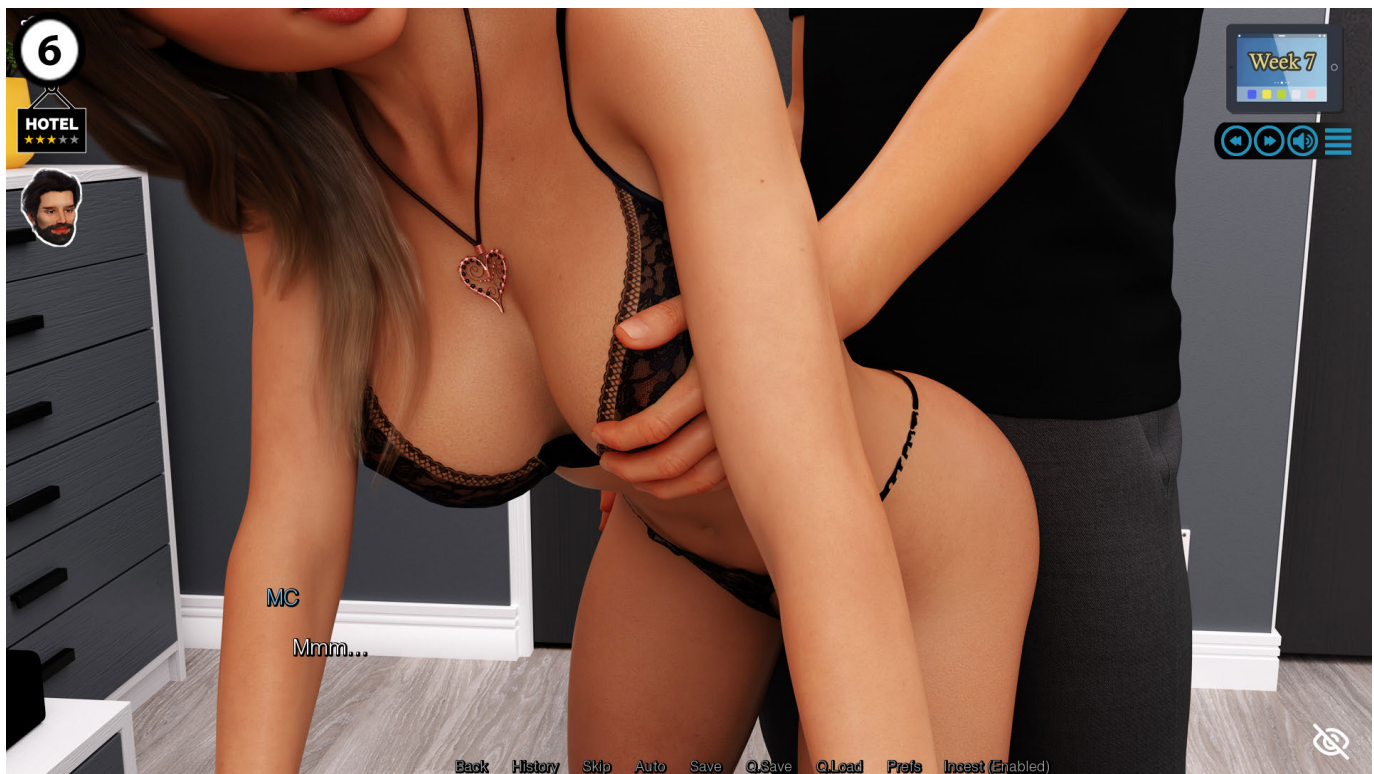
(Requires you to "Carry on" and then select "Top".)



(Requires you to "Carry on" and then select "Bottom".)



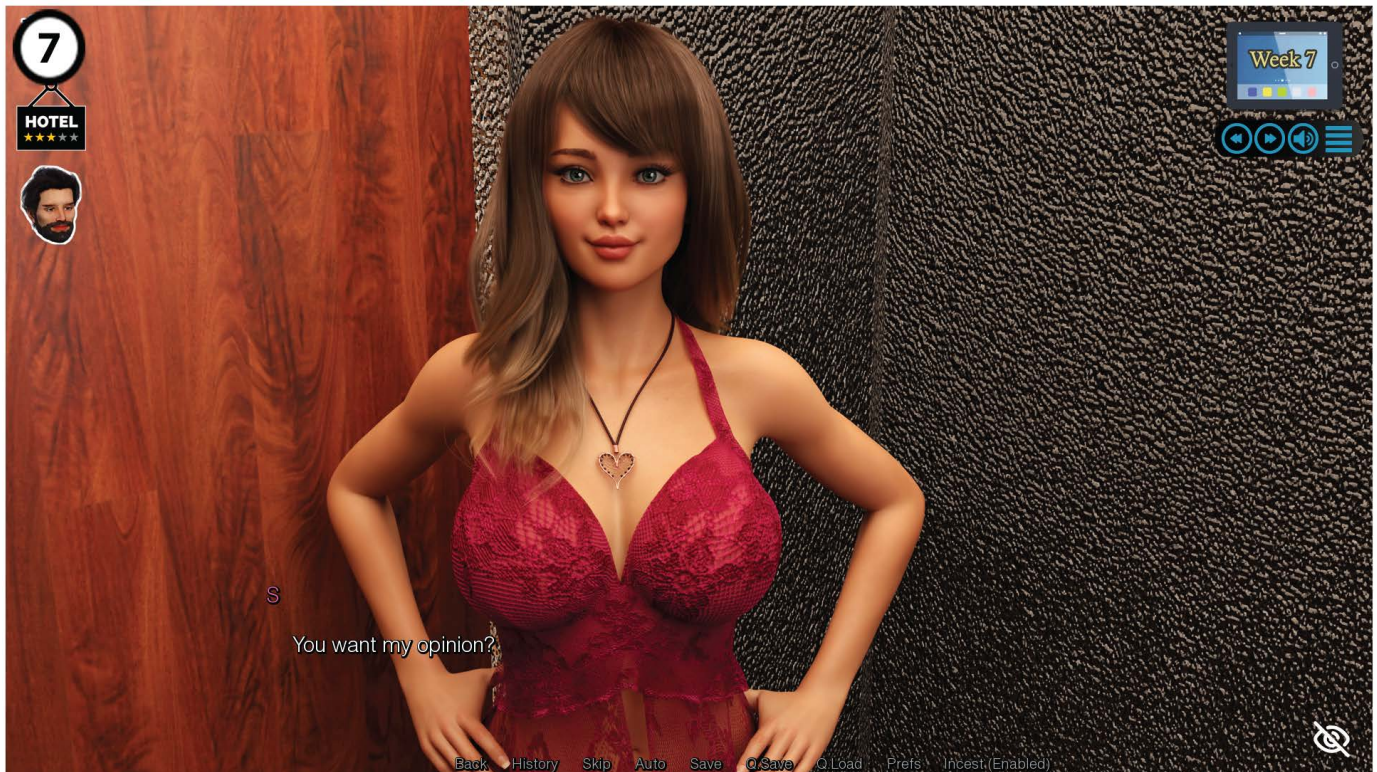
# WEEK 8



(Requires you to select "Approach her".)

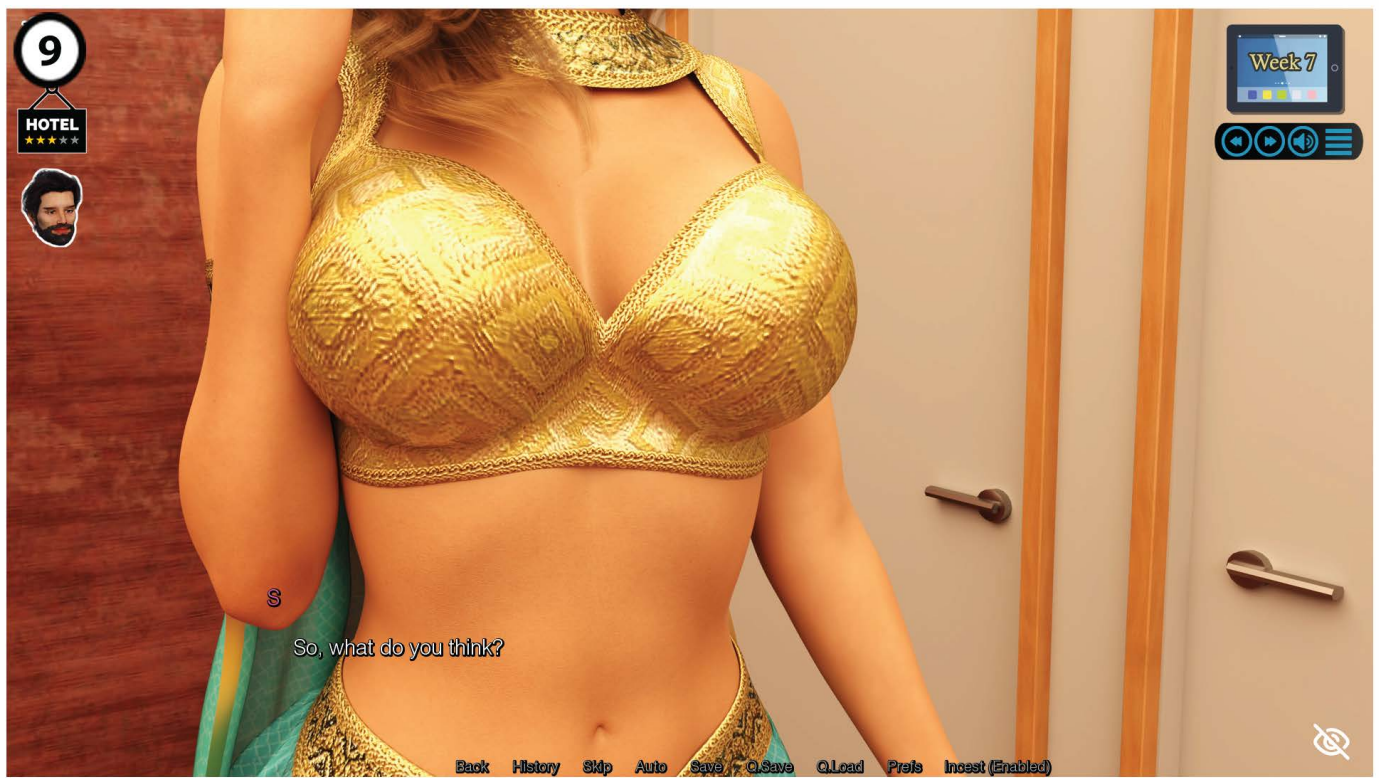


# WEEK 8



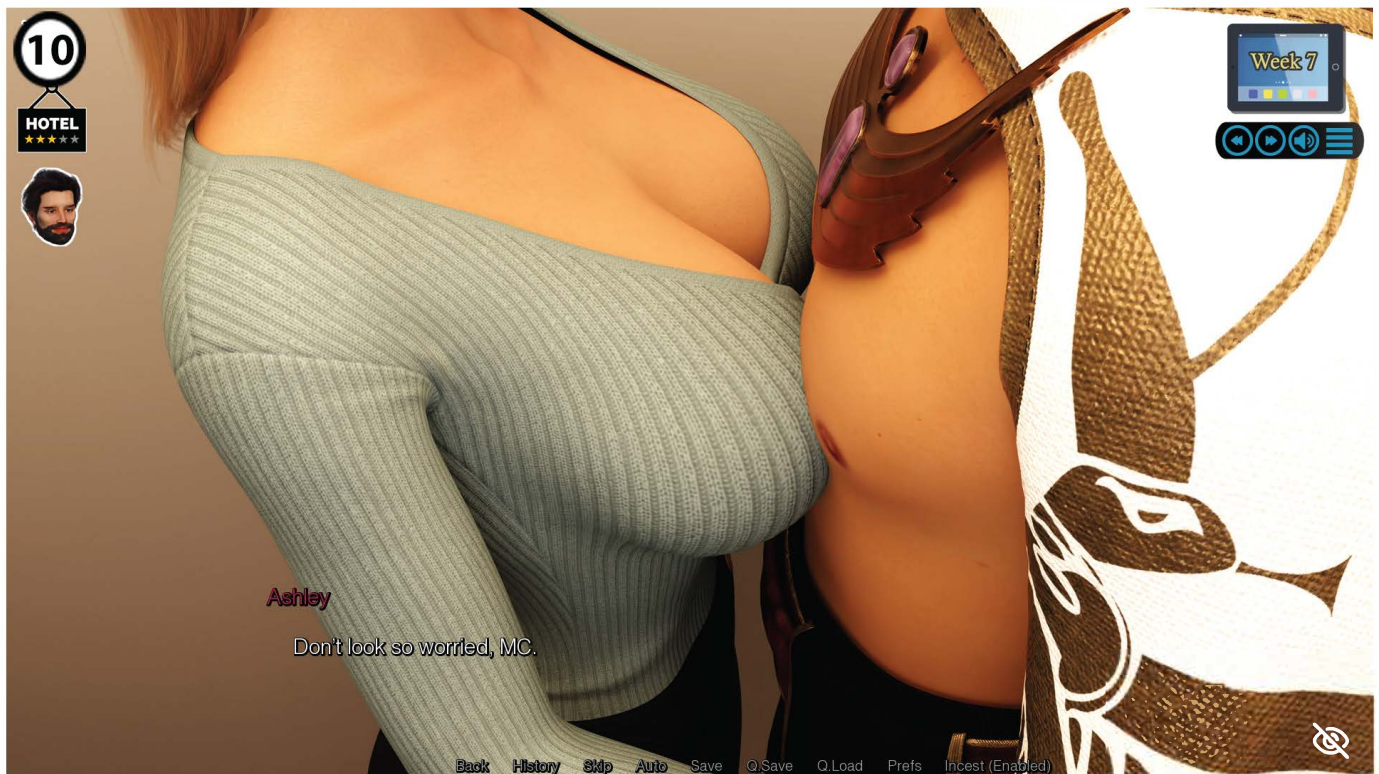


# WEEK 8



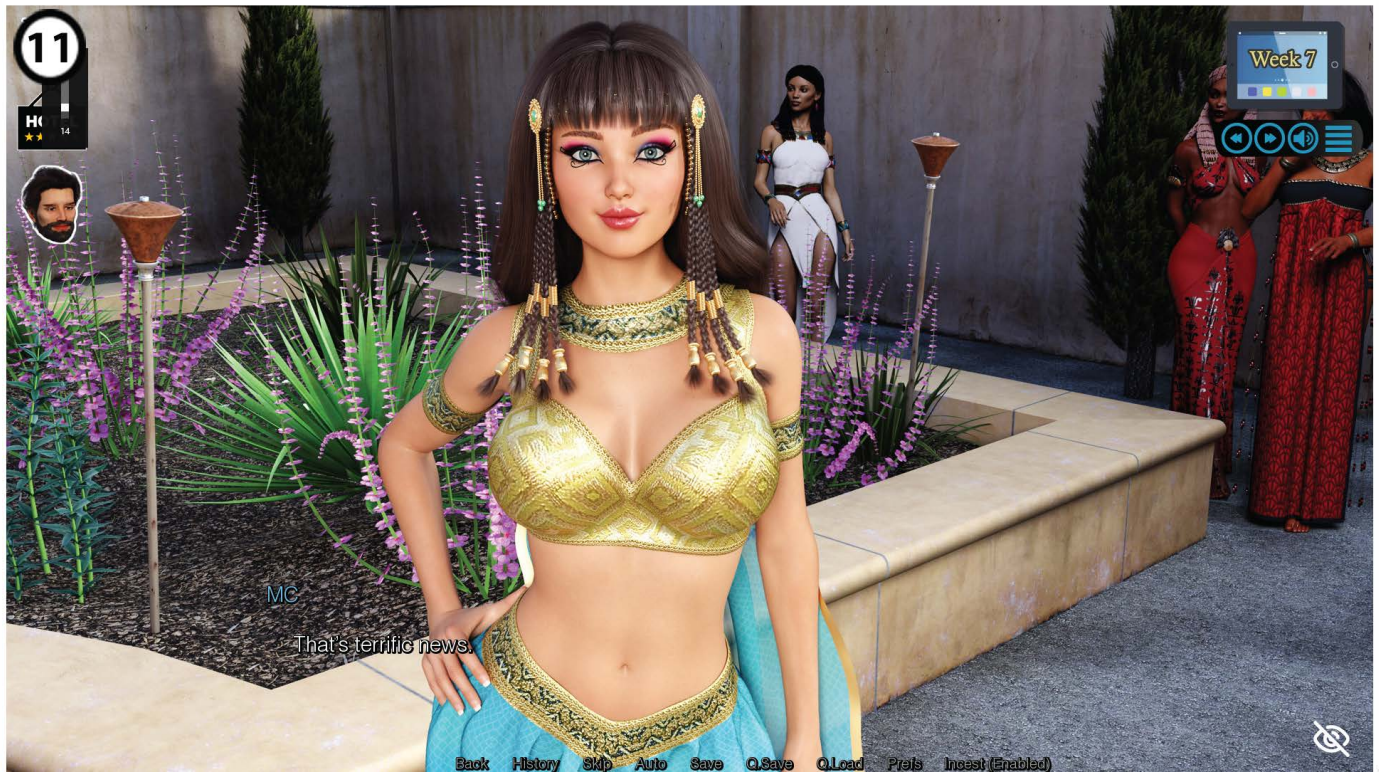


# WEEK 8





# WEEK 8





# WEEK 8





# WEEK 8

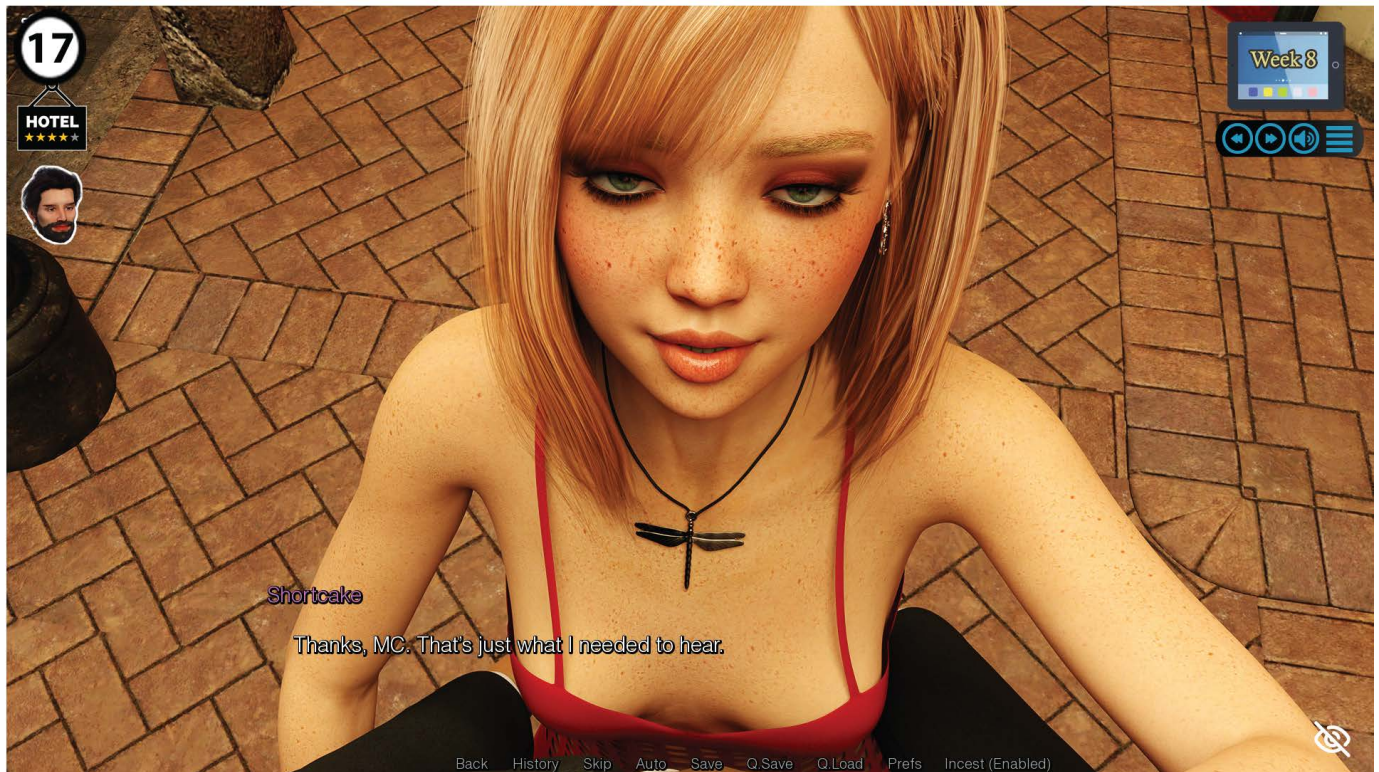


(Requires you to be on S's path but not on Shortcake's path.)





# WEEK 8





# WEEK 8





# WEEK 9





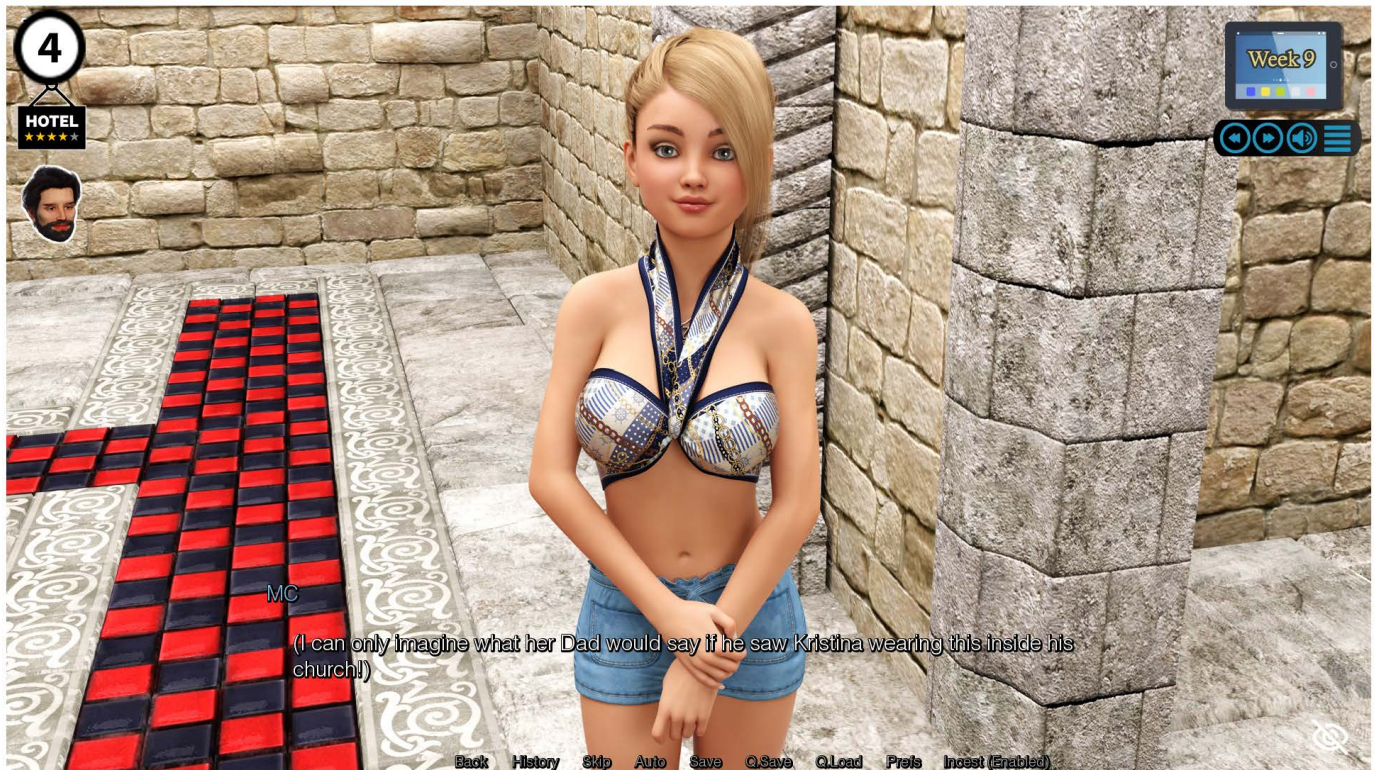
# WEEK 9



(Requires you to "Kiss Her" and then "Squeeze her butt".)



# WEEK 9



(Requires you to NOT be on Kristina's path.)



# WEEK 9





# WEEK 9





# WEEK 9





# WEEK 9





# WEEK 9



(Requires you to NOT be on Ashley's path, or to have selected "Date with S" earlier.)



# WEEK 9



(Requires you to "Grab her ass".)



(Requires you to "Squeeze her breasts".)



# WEEK 9





# WEEK 9



(Requires you to either be on S's path and NOT Ashley's path,  
or be on both their paths but, selected to have your date with S during your lunch with Ashley.)





# WEEK 9



(Requires you to either be on Ashley's path but NOT S's path,  
or be on both their paths, but selected to have your date with Ashley during lunch with her.)



(Requires you to select "Something else".)



# WEEK 9



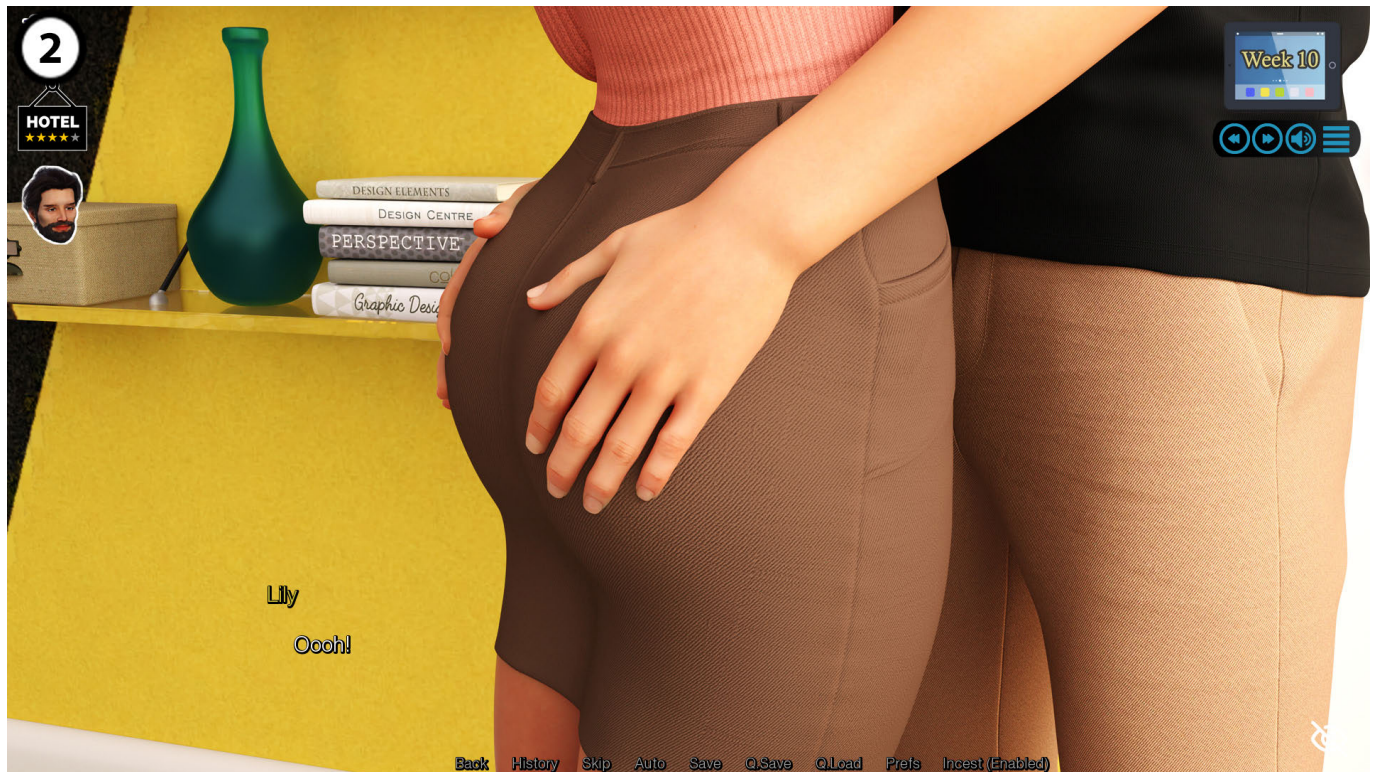


# WEEK 10

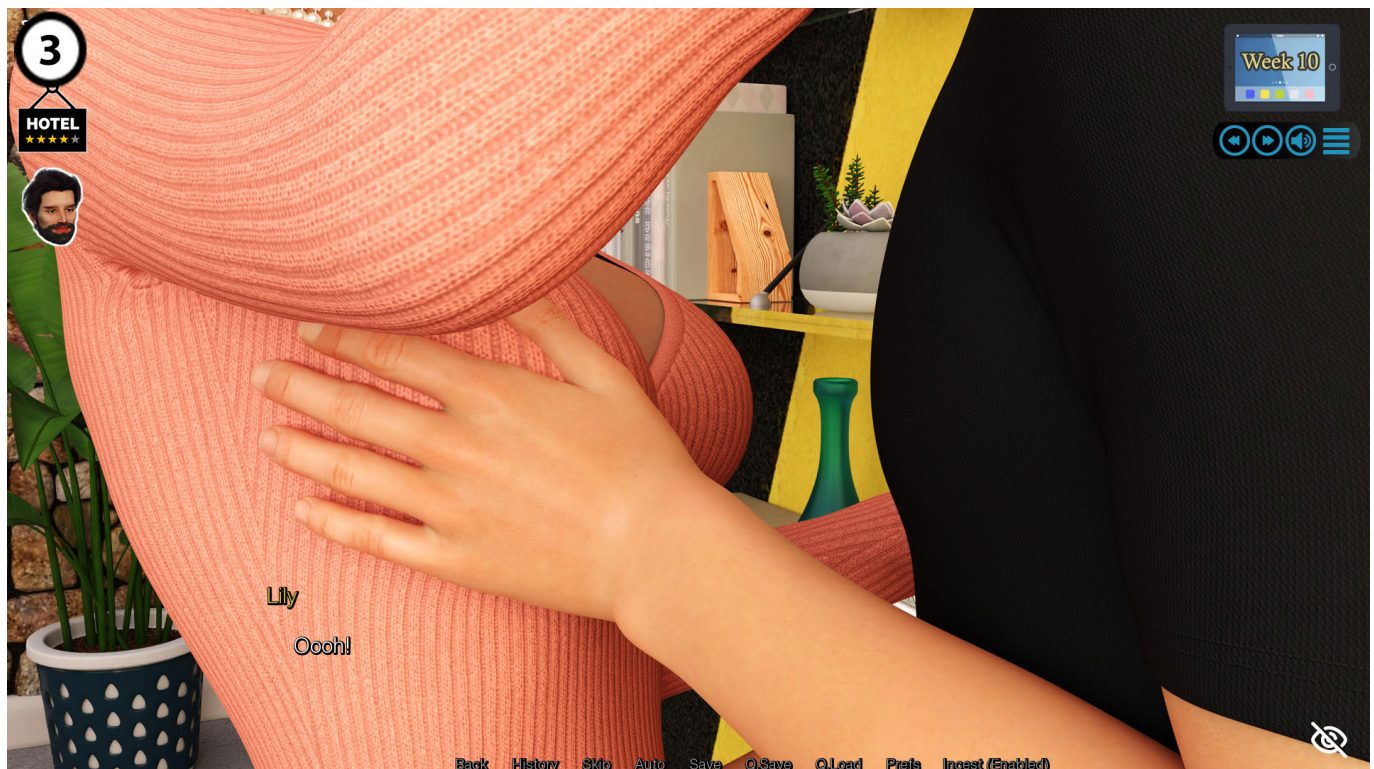




# WEEK 10



(Requires you to "Squeeze her ass".)



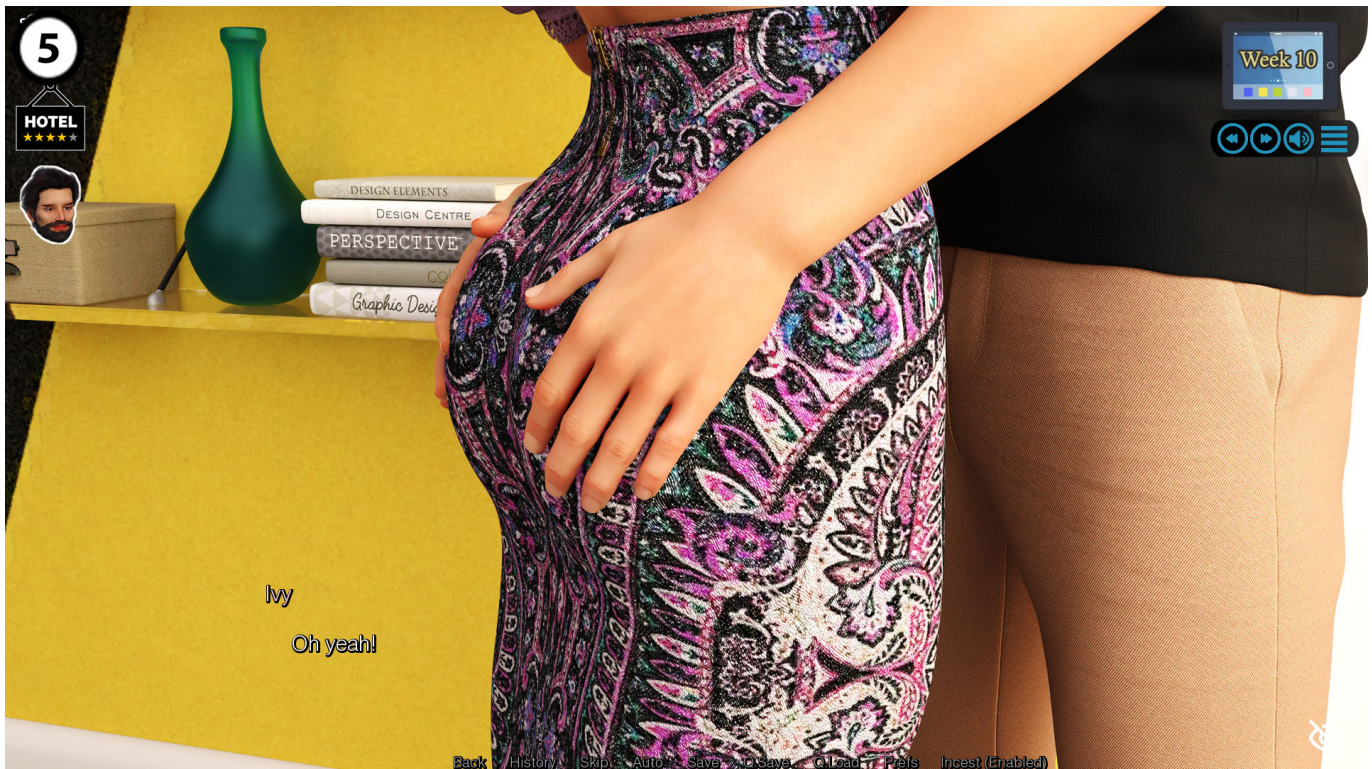
(Requires you to "Fondle her breast".)



# WEEK 10



(Requires you to "Fondle her breast".)



(Requires you to "Squeeze her ass".)

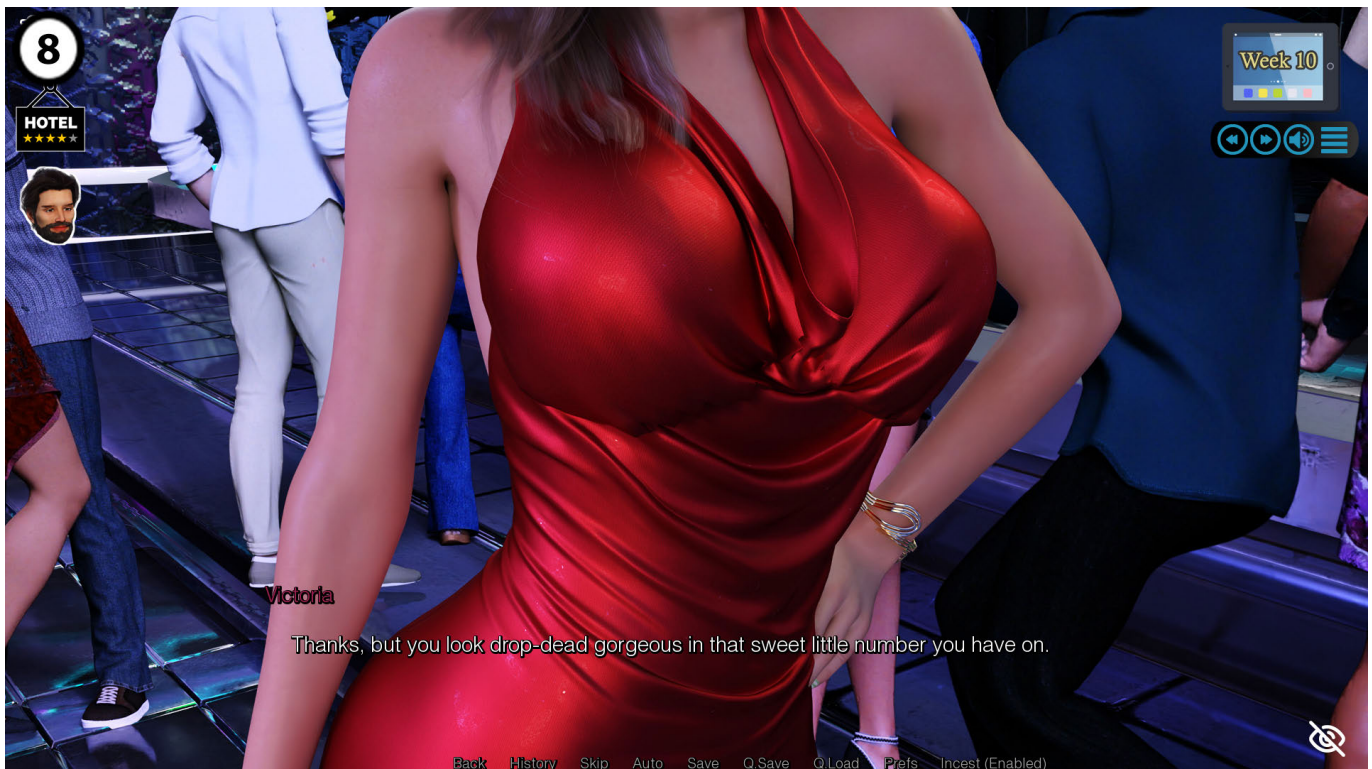


# WEEK 10





# WEEK 10





# WEEK 10



(Requires that you are NOT on both S's and Victoria's paths at the same time.)



# WEEK 10



(Requires you to be on both S's and Victoria's paths.)



# WEEK 10





# WEEK 10





# WEEK 10





# WEEK 10





# WEEK 10





# WEEK 10





# WEEK 10





# WEEK 11





# WEEK 11



(Requires that you to "Squeeze her ass".)



(Requires that you to "Fondle her chest".)



# WEEK 11



(Requires that you to "Squeeze her ass".)



(Requires that you to "Tease her pussy".)



# WEEK 11





# WEEK 11



(Requires you to "Kiss her on the lips".)



# WEEK 11



(Requires you to "French kiss her" and then "Squeeze her ass".)



(Requires you to select "Big and long" and then "Keep paddling".)



# WEEK 11



(Requires you have selected "Use LaterPay" during Chapter 1, Week 4 at the surf shop.)



# WEEK 11





# WEEK 11

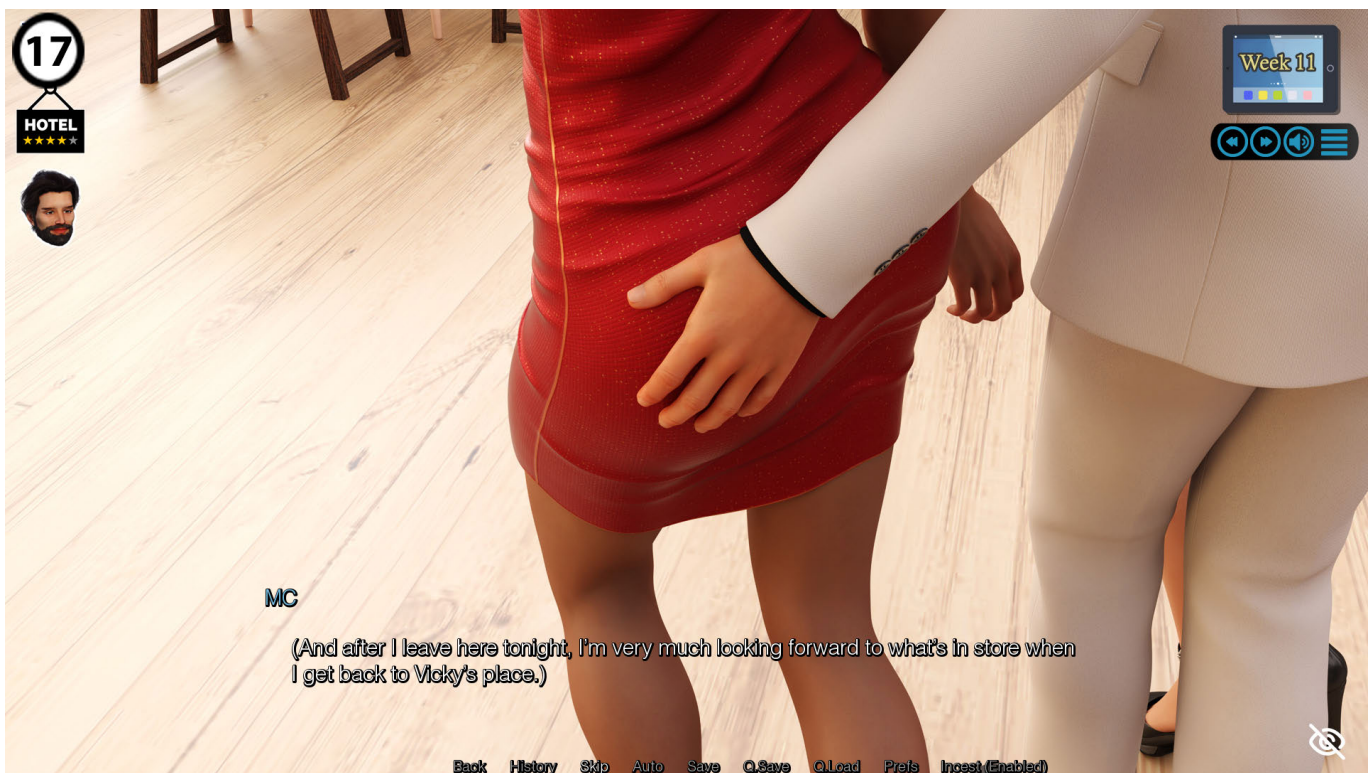




# WEEK 11



(Requires you to be on S's path, but not on Vicky's path.)



(Requires you to be on Vicky's path, but not on S's path.)



# WEEK 11



(Requires you to be on both S's and Vicky's paths and to have not had S reject Vicky's advances during Week 10.)



(Can be found on the Vicky only path or S + Vicky Path.)



# WEEK 11

