

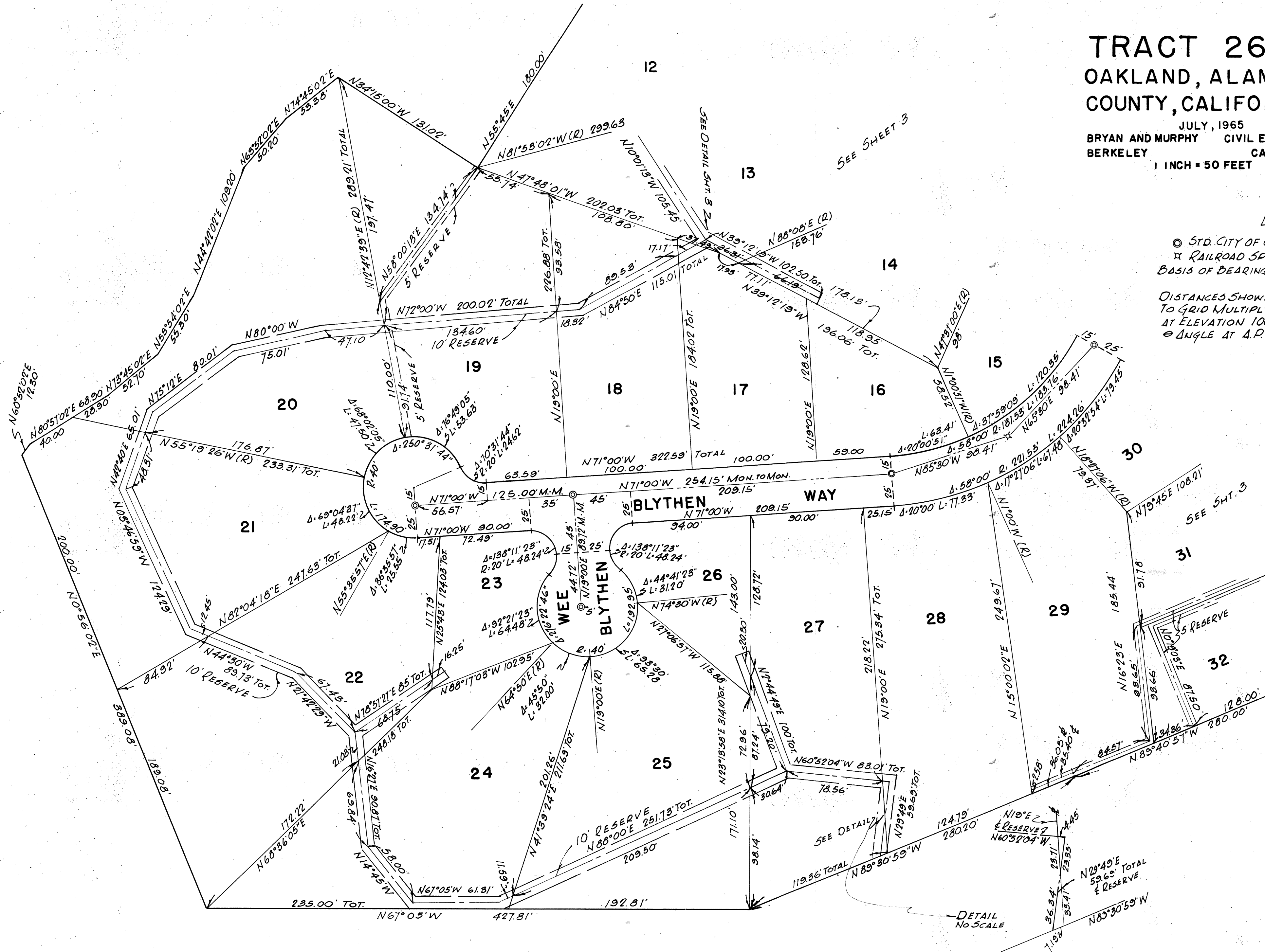
# TRACT 2602 OAKLAND, ALAMEDA COUNTY, CALIFORNIA

JULY, 1965  
BRYAN AND MURPHY CIVIL ENGINEERS  
BERKELEY CALIFORNIA  
1 INCH = 50 FEET

## LEGEND

○ STD. CITY OF OAKLAND MONUMENT TO BE SET  
✱ RAILROAD SPIKE TO BE SET  
BASIS OF BEARINGS IS TRACT 2307

DISTANCES SHOWN ARE GROUND. TO CONVERT  
TO GRID MULTIPLY BY 0.999882 COMPUTED  
AT ELEVATION 1000 USING LATITUDE 37°48'  
θ ANGLE AT 4.P.6.



TR.  
2602