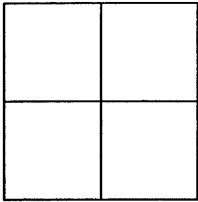


# CORNER RECORD

BK 53 PG 100APN No. 902 - 0010 - 006 - 00 (Optional)Document Number **CR 3683**Unincorporated LivermoreCounty of ALAMEDA, CaliforniaBrief Legal Description May School Rd.

## CORNER TYPE

Government Corner ☐ Control ☐  
Meander ☐ Property ☐  
Rancho ☐ Other ☒  
Date of Survey 03/31/2009

## COORDINATES

(Optional)

N. 453181  
E. 1634423  
Zone \_\_\_\_\_ Datum \_\_\_\_\_  
Elev. \_\_\_\_\_

Corner - Left as found ☒ Found and tagged ☐ Established ☐ Reestablished ☐ Rebuilt ☐

In compliance with Section 8771 of the Professional Land Surveyors' Act, this corner record is being filed to ESTABLISH ☒ / REESTABLISH ☐ the position of an existing monument PRIOR ☒ / SUBSEQUENT ☐ to street or highway reconstruction. (Use this portion only when applicable.)

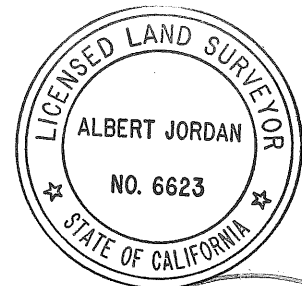
Identification and type of corner found: Evidence used to identify or procedure used to establish or reestablish the corner:  
Found Rail Road Spike on CL at Sta. 13+35.35

A description of the physical condition of the monument as found and as set or reset:  
Found in good condition.

## SURVEYOR'S STATEMENT

This Corner Record was prepared by me or under my direction in conformance with the Land Surveyors' Act on July 28 2009.

Signed Albert Jordan L.S. or R.C.E. Number 6623  
Expires 12/31/2011



## COUNTY SURVEYOR'S STATEMENT

This Corner Record was received 3-31 2009 and examined and filed 1-27- 2010.

Signed [Signature] Title County Surveyor

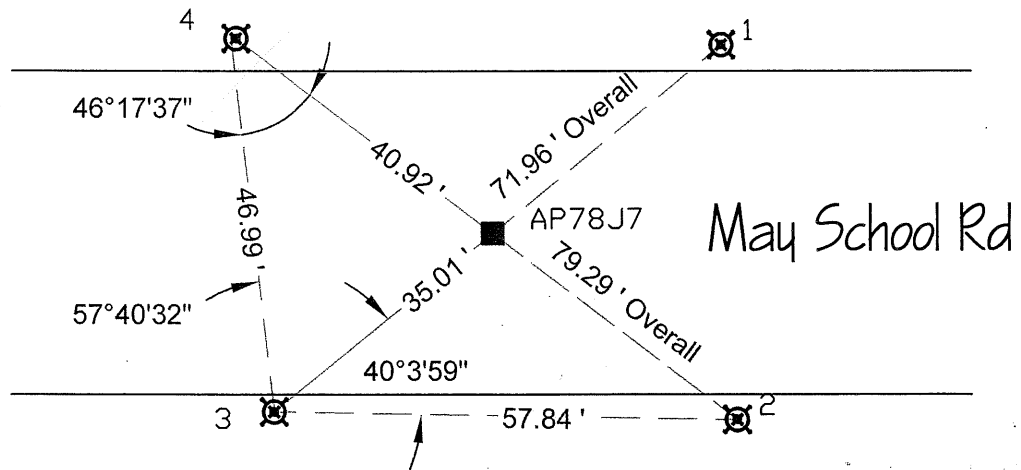


County Surveyor's Comment \_\_\_\_\_

AP78J7



N.T.S.



### Legend

Found: R.R. Spike



Set: 1/2" Rebar w/Plastic Cap



### Credits

Lead: Brian Danforth

Assist.: Steven Sousa

Computations: Joanne Fetzer

CAD: reid

File Name: CR3683\_Thursday\_20090728 CR Page 2 with dxf.dwg

Job#: R23343

### Reference(s)

RS 1159, Bk. 19 P21 (Sheet 17 of 46)

TBD

Alameda County Monument Id System (PTa...) **AP78J7**