

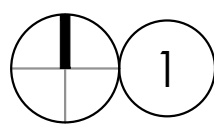
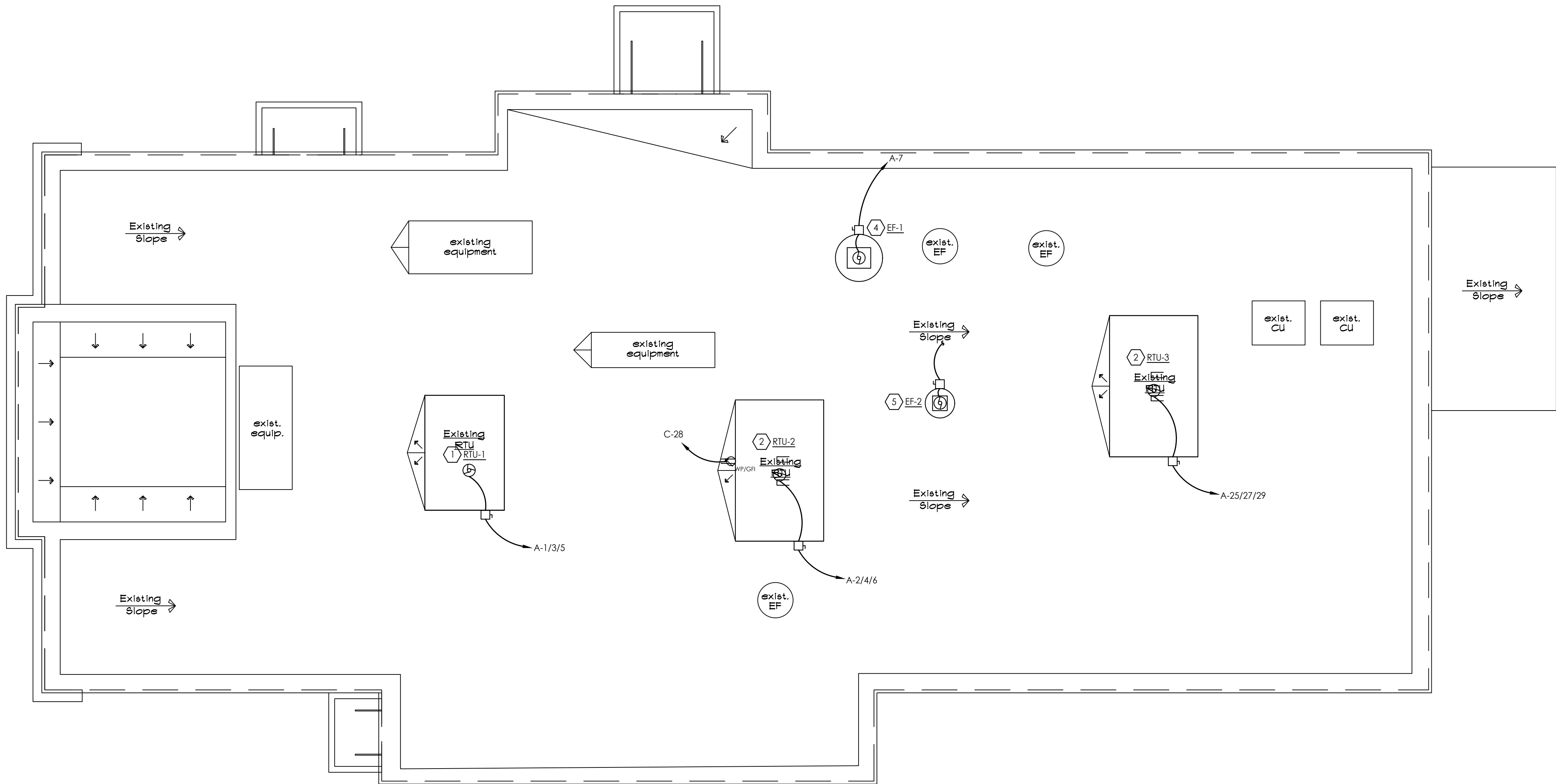
**CONSULTANTS**

**MPW**

MPW ENGINEERING, LLC  
110 W. 7TH STREET • SUITE 600 • FULDA, OK 74731  
(918) 582-4088 • (918) 582-4087 FAX

**CODED NOTES:** ⬡

1. RTU-1: 45 MCA, 208V-3PH, RUN (3) #4, #10G IN 1" CONDUIT FROM 60A/3P BREAKER THRU FACTORY SUPPLIED DISCONNECT TO UNIT. MAKE FINAL CONNECTION.
2. RTU-2: 45 MCA, 208V-3PH, RUN (3) #4, #10G IN 1" CONDUIT FROM 60A/3P BREAKER THRU FACTORY SUPPLIED DISCONNECT TO UNIT. MAKE FINAL CONNECTION.
3. DRIVE-THRU BEVERAGE STATION ICE MAKER CONDENSING UNIT: 2.4 KW, 208V-1PH. PROVIDE (2) #12, #12G IN 3/4" CONDUIT FROM 20A/2P BREAKER THROUGH 30A/2P NON-FUSED NEMA 3R DISC SWITCH TO UNIT. MAKE FINAL CONNECTION.
4. EF-1: 1/2 HP, 120V, PULL (2) #12, #12G IN 3/4" CONDUIT THROUGH HOOD MASTER CONTROL PANEL FOR CONTROL. SEE SHEET E2.1 FOR COORDINATION.
5. EF-2: FRACTIONAL HP, 120V, ROUTE CIRCUIT TO KITCHEN LIGHTING CIRCUIT TO OPERATE WHENEVER RESTAURANT IS IN USE.
6. 32 - WALK-IN FREEZER CONDENSING UNIT: 3.6 KW, 208V-3PH. PROVIDE (3) #12, #12G IN 3/4" CONDUIT FROM 20A/3P BREAKER THROUGH UNIT MOUNTED 30A/3P FUSED NEMA 3R DISC. SWITCH TO UNIT. MAKE FINAL CONNECTION.
7. 33 - WALK IN COOLER CONDENSING UNIT: 5.4 KW, 208V-3PH. PROVIDE (3) #12, #12G IN 3/4" CONDUIT FROM 20A/3P BREAKER THROUGH UNIT MOUNTED 30A/3P NON-FUSED NEMA 3R DISC. SWITCH TO UNIT. MAKE FINAL CONNECTION.
8. BEVERAGE STATION ICE MAKER CONDENSING UNIT: 2.4 KW, 208V-1PH. PROVIDE (2) #12, #12G IN 3/4" CONDUIT FROM 20A/2P BREAKER THROUGH 30A/2P NON-FUSED NEMA 3R DISC SWITCH TO UNIT. MAKE FINAL CONNECTION.



**ROOF PLAN - ELECTRICAL**

1/4" = 1'-0"

**Arby's**

New Restaurant Conversion For:  
**Arby's - 1808 East Harding Street**  
Morrilton, Arkansas

PROJECT NUMBER:	
ISSUE	DATE
PRELIMINARY	12-14-2021
PERMIT	04-14-2022
REVISION	

ROOF PLAN  
ELECTRICAL

SHEET:

**E3.1**