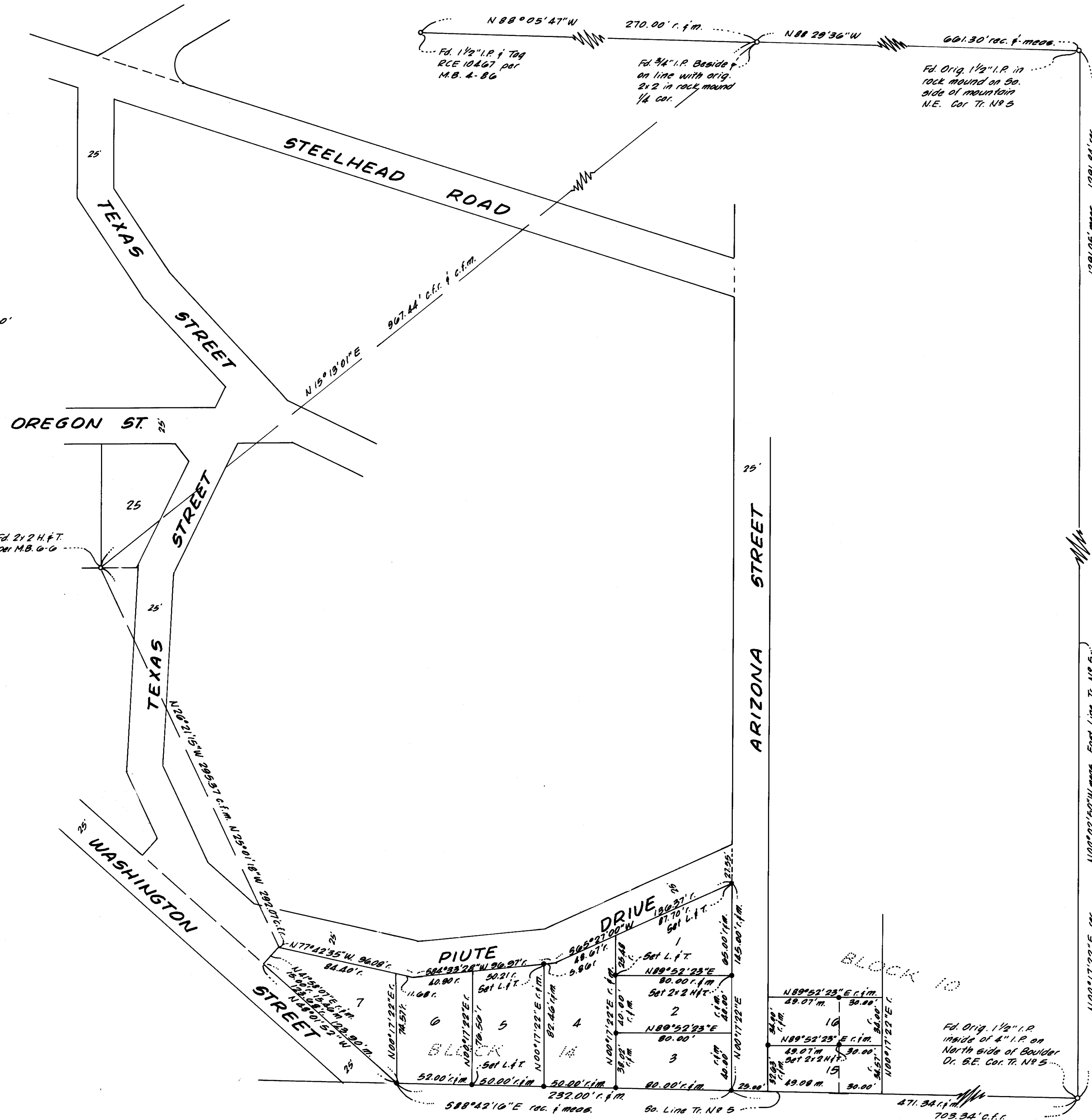


Scale: 1" = 50'



### SURVEYOR'S CERTIFICATE

This map correctly represents a survey made under my direction in conformance with the requirements of Chapter 15 of Division 3 of the Business and Professions Code in May, 1969 at the request of C.W. Hunt

*Gordon C. Holmes*  
Gordon C. Holmes RCE 10467

### COUNTY SURVEYOR'S CERTIFICATE

I have examined this map for conformance with the requirements of Chapter 15 of Division 3 of the Business and Professions Code this \_\_\_ day of \_\_\_ 1969.

County Surveyor

3947

### COUNTY RECORDER'S CERTIFICATE

Filed for record this 23<sup>rd</sup> day of July, 1969, at 1:05 P.M. in Book 6 of Maps at Page 42 at the request of Gordon C. Holmes.

County Recorder

### BASIS OF BEARINGS

The record bearing of N 88° 29' 36" W of the north line of Block 1 of Silver Lake Pines Tract No. 5 per the map thereof was used as the basis of bearings shown on this map.

### MONUMENT NOTE

- indicates a found point as noted.
- indicates a 3/4" I.P. & Tag set unless otherwise noted.

## RECORD OF SURVEY

OF LOTS 15 AND 16, BLOCK 10 AND ALL OF BLOCK 14, ALL IN SILVER LAKE PINES TRACT NO. 5, IN THE COUNTY OF MONO, STATE OF CALIFORNIA~

Gordon C. Holmes RCE 10467  
Bishop, Calif.

May, 1969  
Scale: 1" = 50'