

CORNER RECORD

COUNTY OF MONO T. 2N. R. 25426E M.D. MERIDIAN CALIFORNIA
 CORNER TYPE: GOV'T. CORNER ☒ MEANDER ☐ RANCHO ☐ CONTROL ☐ OTHER ☐
 CORNER IDENTIFICATION - DATE OF VISIT Aug 28 1989



CORNER - LEFT AS FOUND ☒ FOUND AND TAGGED ☐ REESTABLISHED OBLITERATED CORNER ☐ REBUILT ☐

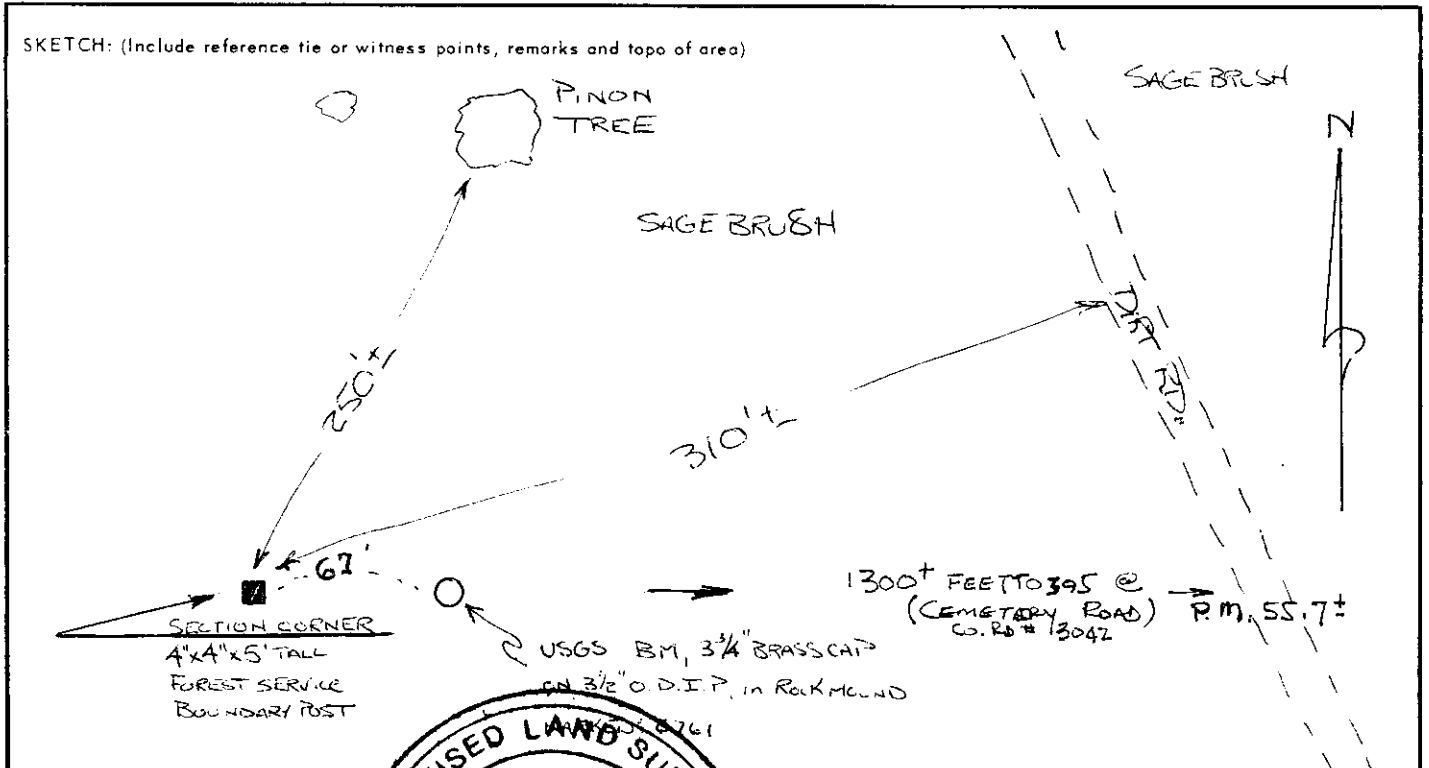
PHYSICAL DESCRIPTION OF CORNER FOUND: EVIDENCE AND METHOD USED TO IDENTIFY OR REESTABLISH FOUND
4"x4"x5' HIGH U.S. Forest Service Boundary Post marking the corner, the Post is
6.7' WEST of USGS BENCH MARK '6761', 250' S of a PINON TREE & 310' WEST
of a DIRT ROAD. FOUND REMAINS of OLD SCRIBED WOOD & LATH Lying in the
IMMEDIATE AREA. 1901 US GLO NOTES CALL TO THE USGS B.M. AS ON
LINE @ 0.1 CH EAST OF CORNER. THE USFS BDRY. POST IS ACCEPTED AS THE CORNER

PHYSICAL DESCRIPTION OF MONUMENTS REBUILT OR PERPETUATED LOCATION - STATE LANDS COMMISSION
HAVE MADE THE SAME DECISION - PRIOR TO
THIS DATE.

PHOTOGRAPHS ARE AVAILABLE @ CALTRANS D-9 OFFICE @ 500 So. MAIN, Bishop -
ROLL #1 EXPOSURES #7(N); #8(W) & #9 (Southerly)

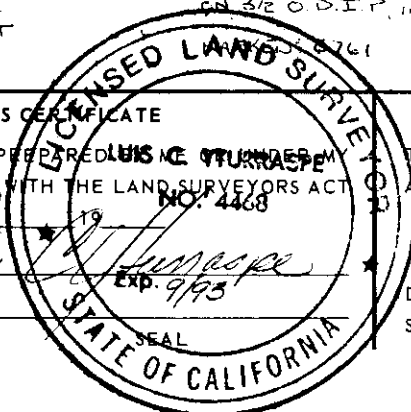
CALIFORNIA COORDINATE SYSTEM ORDER: FIRST ☐ SECOND ☐ THIRD ☒
 STATIONS USED: NGS (USC & GS) ☐ STATE ☒ COUNTY ☐ OTHER ☐ STATION PM 55.80 STATION PM 56.40
 ZONE 3 ELEVATION _____ NORTHINGS (Y) 2193308.0 ± EASTINGS (X) 6947810.5 ±

SKETCH: (Include reference tie or witness points, remarks and topo of area)



SURVEYOR'S CERTIFICATE

THIS CORNER RECORD WAS PREPARED BY L. S. HUMASKE NO. 4468
 DIRECTION IN CONFORMANCE WITH THE LAND SURVEYORS ACT
 ON 8/89
 SIGNED: [Signature]
 L.S. or R.C.E. No. _____



COUNTY SURVEYOR'S CERTIFICATE

THIS CORNER RECORD WAS RECEIVED 3.4 19 91
 AND EXAMINED AND FILED 4.28 19 91
 BY: [Signature]
 TITLE: COUNTY SURVEYOR
 DOCUMENT No. 2N 25-19-1
 STATEMENT ON BACK OF SHEET

YES ☐ NO ☒