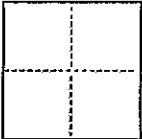


CORNER RECORD

CR 348

COUNTY OF ALAMEDA T. R. MERIDIAN CALIFORNIA
CORNER TYPE: GOV'T. CORNER ☐ MEANDER ☐ RANCHO ☐ CONTROL ☐ OTHER ☐
CORNER IDENTIFICATION — DATE OF VISIT DECEMBER 3 1991



CORNER — LEFT AS FOUND ☐ FOUND AND TAGGED ☐ REESTABLISHED OBLITERATED CORNER ☐ REBUILT ☐

PHYSICAL DESCRIPTION OF CORNER FOUND; EVIDENCE AND METHOD USED TO IDENTIFY OR REESTABLISH

● Found original City of Oakland concrete monuments in Grand View Drive as shown on "Resubdivision of Claremont Heights No.1" (4 M. 62).

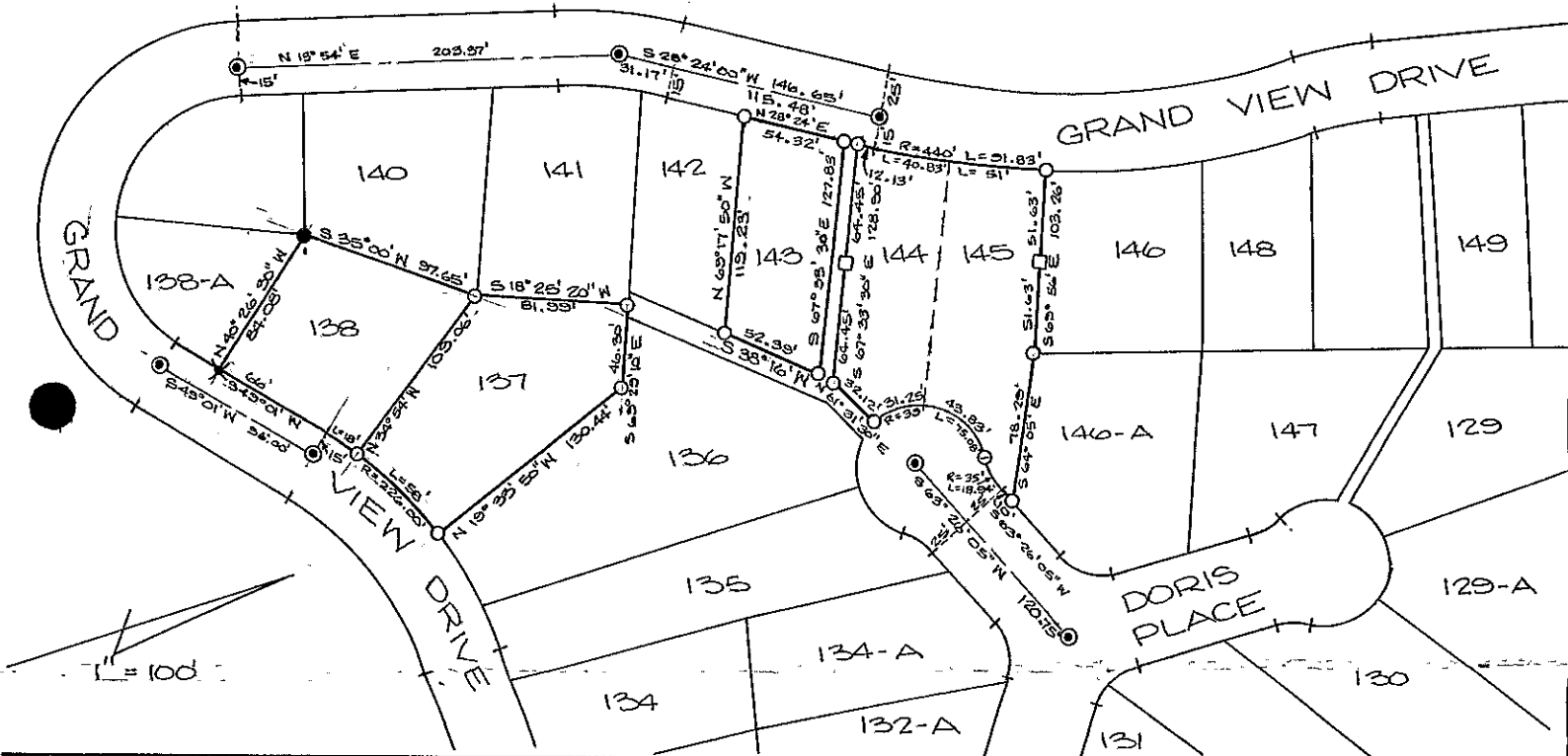
PHYSICAL DESCRIPTION OF MONUMENTS REBUILT OR PERPETUATED

- Set 5/8" rebar with plastic cap, tagged L.S. 5252 and
- Set hub and tack on lots 143, 144 and 145 per record data, "Resubdivision of Claremont Heights No.1" (4 M. 62).
- FOUND 5/8" REBAR WITH PLASTIC CAP, TAGGED R.C.E. 24059
- ✕ FOUND NAIL WITH TAG, R.C.E. 24059

CALIFORNIA COORDINATE SYSTEM ORDER: FIRST ☐ SECOND ☐ THIRD ☐
STATIONS USED: NGS (USC & GS) ☐ STATE ☐ COUNTY ☐ OTHER ☐ STATION STATION
ZONE ELEVATION NORTHINGS (Y) EASTINGS (X)

(Fold)

SKETCH: (Include reference tie or witness points, remarks and topo of area)



SURVEYOR'S CERTIFICATE

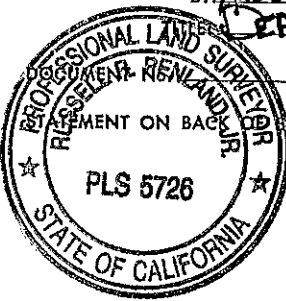
THIS CORNER RECORD WAS PREPARED BY ME OR UNDER MY DIRECTION IN CONFORMANCE WITH THE LAND SURVEYORS ACT ON December 1991.

SIGNED:
L.S. or R.C.E. No.: 5252



COUNTY SURVEYOR'S CERTIFICATE

THE CORNER RECORD WAS RECEIVED JUNE 23, 1994
AND EXAMINED AND FILED JUNE 24, 1994
BY: Russell H. Hinton
DEPUTY COUNTY SURVEYOR



YES ☐ NO ☒