



Albert d'Arnal

INTERNATIONAL



LEADER IN PROFESSIONAL COSMETICS



GENERAL CATALOGUE OF COSMETIC PRODUCTS.

In this day and age, in which scientific and technological progress in the cosmetic field takes place in a vertiginous way; the professional beauty specialist should be very well informed about the latest products.

Technological progress and experienced investigation and development obtained in different fields which determine the future, are being used to manufacture and to keep a high quality for the Albert d'Arnal Cosmetic Line.

The innovation pace, positions us as leaders in the cosmetic market; the primary objective of Albert d'Arnal.

The relentless weather, the aggressive environmental factors, etc., act in a negative way.

We can only stand up to those phenomena with the help of special treatments that give a solution to the problems we encounter.

In this catalogue you will find the answers you need.

Albert d'Arnal

GENERAL CATALOGUE

INDEX

PRODUCT LINES	PAGE
• NATURA ESSENTIAL LINE – <i>Young skin, basic care</i>	7
• OILY SKIN LINE – <i>Oily and/or Problem Skin</i>	11
• COLLAGEN LINE – <i>Dry, dehydrated and flaccid skin</i>	14
• ORCHID SKIN LINE – <i>Devitalized, flaccid skin</i>	18
• T. BOTU LIKE LINE – <i>Skin with expression wrinkles</i>	20
• TOP WHITENING LINE – <i>Depigmenting, clarifying, anti-age</i>	22
• ADN + VITAMIN C LINE – <i>All types of skin</i>	24
• AHA FRUIT FORTE COMPLEX LINE – <i>Asphyxiated, rough skin</i>	26
• CHRONOBIOLOGICAL LINE	29
• REGENERATIVE LINE	32
• PEELINGS – <i>Cell-renewal</i>	33
• FACE MASKS	35
• BIOLOGICALS	37
• BODY LINE	40
• POST-DEPILATION	41
• BATH AND SHOWER LINE	42
• SOLAR LINE	45
• SPA LINE	49
• AROMA THERAPY - ESSENTIAL OILS	54



Albert d'Arnal

GENERAL CATALOGUE

NATURA ESSENTIAL LINE

YOUNG SKIN AND BASIC CARE

EYE MAKE-UP REMOVER LOTION – 01100 / 02100

All types of skin



Indications

Make-up remover for eyes and lips, pH-neutral, without causing any irritation due to the effects of the decongestive Poliplant-Complex extracts. Hypoallergenic.

Most important active ingredients

Chamomile Extract: Anti-inflammatory and healing properties.

Instructions

Remove make-up with moistened cotton balls. They can be kept in the refrigerator and be used as a decongestant compress.

Presentation

Bottle of 250 ml. and 500 ml.

CLEANSING MILK – 01101 / 02101

Normal and mixed skin

Indications

Make-up remover emulsion that because of its composition, does not alter the pH-skin factor. It provides a pleasant sensation of comfort and a final silky touch for the skin. Hypoallergenic.

Most important active ingredients

Aloe Vera extract: Moisturizing.

Instructions

Apply a small quantity onto face and neck and remove with water.

Presentation

Bottle of 250 ml. and 500 ml.



TONIC LOTION – 01102 / 02102

Normal and mixed skin

Indications

Lotion that completes the cleansing of the skin. It does not alter the pH-factor of the skin. Contains vitamin B and E and is enriched with corn oil and rose-hip oil. Hypoallergenic.

Most important active ingredients

Aloe Vera Extract: Moisturizing
Alantoin: Soothing, moisturizing and Calming.

Instructions

Cleanse skin first with cleansing milk and continue by applying tonic lotion onto face and neck with moistened cotton balls, in order to remove leftover make-up.

Presentation

Bottle of 250 ml. and 500 ml.



ROYAL JELLY SILK CREAM – 01103 / 02103

All skin types

Indications

Royal Jelly vitalizes the skin. The biopolymer SERICIN has a great affinity with the keratin, forming a protective, humectant, semioclusive and anti-wrinkle film, which produces instantly a smooth and silky touch. It contains vitamin B, E and Rose-Hip Oil. Does not alter the pH-skin factor. The formula turns this cream into a real beauty balsam. Hypoallergenic.

Most Important active ingredients

Wheat Germ Oil: Antioxidant and anti-ageing.
Sweet Almond Oil: Hydrating and soothing.
Aloe Vera Extract: Hydrating.
Hydrolyzed Collagen: Provides elasticity, tonicity and flexibilidad to the skin.

Instructions

Apply daily onto face and neck by means of a soft massage until its total absorption.

Presentation

Jar of 50 ml. and bottle of 250 ml.



CLEANSING MILK - S – 01104 / 02104

Dry and sensitive skin



Indications

Cleansing emulsion for sensitive skin. Does not alter the pH-factor of the skin.

Enriched with sweet-almond and coconut oil. Contains Aloe Vera. Hypo-allergenic.

Most important active ingredients

Aloe Vera Extract:	Moisturizing
Bisabolol:	Soothing, healing, calming.

Instructions

Apply a small quantity onto face and neck and remove with water.

Presentation

Bottle of 250 ml. and 500 ml.

TONIC LOTION - S – 01105 / 02105

Dry and sensitive skin

Indications

Lotion that smoothenes and refreshes the skin. Does not alter the pH-factor of the skin. Contains Aloe Vera. Hypoallergenic.

Most important active ingredients

Aloe Vera Extract:	Moisturizing.
Alantoin:	Soothing, moisturizing, calming.
Marshmallow:	Decongestive and soothing.

Instructions

Apply tonic lotion onto face and neck with moistened cotton balls, after cleansing face with cleansing milk, in order to remove leftover make-up.

Presentation

Bottle of 250 ml. and 500 ml.



HYDRA SENSITIVE SKIN – 01106 / 02106

Dry and sensitive skin

Indications

Emulsion cream, with smoothing effects. Does not alter the pH-skin factor. Enriched with sweet-almond and rose-hip oil, vitamin B, E, and Retinol. Contains Aloe Vera. Hypoallergenic.

Most important active ingredients

Aloe Vera Extract:	Moisturizing
Alantoin:	Soothing, hydrating, calming.
Rose Hip Oil:	Regenerating.
Hammamelis Virginiana:	Astringent, Anti-inflammatory
Sweet Almond Oil:	Hydrating, soothing.
Calendula Extract:	Calming, anti-septic.



Instructions

Apply daily onto face and neck and realize a soft massage until total absorption of the product.

Presentation

Jar of 50 ml. and bottle of 200 ml.

MALVACO TONIC LOTION - 02210

Dry and sensitive skin types.

Indications

Decongestive Tonic Lotion that softens and refreshes the skin, because of its active ingredients. Produces an effective soothing action, especially indicated for dry and sensitive skin types. Its special composition allows the tonic lotion to be mixed in with face masks, when prepared instantaneously.

Most important active ingredients

Collagen:	Calming, vein constrictor.
Cornflower Extract:	Decongestive, soothing, astringent.
Marshmallow:	Calming, anti-irritating and moisturizing.
Sage:	Anti-free radicals.
Chamomile Recutita:	Anti-septic, tonifying and soothing.

Instructions

First cleanse skin and remove impurities. Continue by applying tonic lotion onto face and neck with moistened cotton balls, in order to remove leftover make-up.

Presentation

Bottle of 1000 ml.



OILY SKIN LINE

TREATMENT FOR OILY AND/OR PROBLEM SKIN

PURE SKIN FOAM CLEANSER - 01201

Foam Cleanser

Indications

Foam that easily removes make-up and cleanses profoundly the delicate skin types. Especially indicated for the hygiene of skin with tendency to have acne.

Instructions:

Apply on face and neck and realize a smooth and circular massage.

Rinse with water afterwards.

Most important active ingredients

Hammamelis Virginiana: Astringent, Anti-inflammatory, Calming.

Instructions

Apply foam cleanser onto face and neck and realize a smooth and circular massage. Rinse with water afterwards.

Presentation

Bottle of 150 ml.



PURE SKIN MOISTURIZING SERUM - 01202

Regulator, hydrating

Indications

Serum with a texture that is specially formulated for all skin types. It is easily absorbed, non-oily, and leaves the skin in perfect condition while giving it a satin finish.

Instructions

After a correct cleansing of the area to be treated, the serum should be applied while realizing a soft massage until total absorption of the product.

Most important active ingredients

Laminaria Digitata: Stimulates the hydrolysis of lipids.
(derived from algae)

Crithmum Marritum: Anti-ageing.
(Marine Plant)

Presentation

Tube of 50 ml.



PURE SKIN CREAM - 01203

Purifying Cream

Indications

Dermo-Purifying Cream that helps to recover the oily skin area with black head accumulation. It regulates the oily secretion because of the Sulphur compound, protected by Colloidal substances that assure the stability and effectiveness.

The Salicylic Acid helps to regenerate the altered skin tissue.



Most important active ingredients

Salicylic Acid: Cellular Renovation

Sulphur Compound: Regulates the excess of oily secretion.

Instructions

After a profound cleansing of the skin, apply a little bit of cream on the most affected parts of the skin insisting on parts with oily secretion and/or black points.

Presentation

Tube of 50 ml.

PURE SKIN LOTION - 01204

Purifying Lotion

Indications

Tonifying and astringent solution that balances oily and/or problem skin, while eliminating the oily excess and working on the dilated pores. The ingredients have derma-purifying qualities.

Most important active ingredients

Hamamelis: Calming and vein constrictor.

Aloe Vera: Humectant action and anti-inflammatory.

Alcloxa: Astringent and purifying action.

(Derived from Alantoina)

Instructions

Apply the lotion with a cotton ball onto face and neck, after a profound cleansing of the skin, insisting on those areas with oily secretion and blackheads.

In continuation, apply the Pure Skin moisturizing serum to balance the skin

Presentation

Bottle of 250 ml.



PURE SKIN EQUILIBRANT BIO-FLUID - 05202

Dermo-purifying

Indications

Biological fluid especially indicated for treatments of problem skin with excess of oily secretion. This biological product works as a balancing and dermo-purifying factor for the cutaneous pores. The Organic Sulphur derivative and the Burdock Plant Complex regulate the oily secretion. The Essential Oil of Rosemary helps to purify and cleanse the skin.

Most important active ingredients

Bardana:	Regulates oily secretion.
Sulphur:	Regulates the secretion of the sebaceous glands.
Essential oil of Rosemary:	Purifying action.

Instructions

After a correct cleansing of the greasy skin, apply the contents of one ampoule and realize a soft pinching on the skin. Leave product to work for 10 minutes. Remove excess product with a cotton wetted in Purifying lotion.



Presentation

Box with 12 ampoules of 5 ml. each

PURIFYING MASK - 04202

Oily and/or problem skin

Indications

Creamy purifying mask, astringent (helps to close pores). Balances and normalizes the skin.

Most important active ingredients

Rice starch: Absorbing action and smoothing.
Bio-sulphur: Regulates the secretion of the sebaceous glands.

Instructions

Apply a smooth layer of the product on the area to be treated. Allow to work 15 - 20 minutes and remove with abundant water.

Presentation

Tube of 200 ml.



COLLAGEN LINE

DRY, DEHYDRATED AND FLACCID SKIN

COLLAGEN SYNERGY CREAM with Q₁₀ + O₂ – 01130 / 02220

For dry skin – Anti-wrinkles

Collagen Cream with Coenzyme Q₁₀ and Revitaline BT. Suitable for flaccid, dehydrated and lifeless skin. Because of the union of its components, the skin will stay elastic, hydrated and oxygenated.

As this cream is rich in vitamin E and F, it improves the cellular renovation, protects, softens and optimizes the aspect of the skin.

Most important active ingredients

Marine Collagen:	Stimulates new fibre formation of the dermis. Regulates the cutaneous moisture.
Coenzyme Q ₁₀ :	Reactivates the cellular metabolism. Anti-free radicals.
Revitaline BT:	Oxygenation, recuperation and regeneration.
Wheat Germ Oil:	Rich in Vitamin E and F; provides protection against the ageing of the skin and normalizes cutaneous alterations.
Moisturizing Complex:	Moisturizes the external layers of the skin.

Instructions

Apply cream during the day and/or at night, after a correct cleansing of the skin, while realizing a light massage until total absorption of the product.

Presentation

Jar of 50 and 250 ml.



HAND PLUS COLLAGEN - 01155

Hand Cream

Indications

Protective moisturizing cream, especially formulated for those hands suffering from external factors. Avoids dryness and smoothens wrinkles, which appear over the years.

Most important active ingredients

Glycerine:	Preserves the pH-skin factor.
Soluble Collagen:	Stimulates the formation of new fibres of the dermis.
Allantoin:	Soothing, anti-irritant.

Instructions

Apply regularly during the day, especially after washing hands. Massage cream until its total absorption.

Presentation

Tube of 50 ml.



COLLAGEN LIFT - 01164

Special gel with Liposomes for eyes and lips

Indications

Special gel for eye and lip contour area, based on Collagen and Elastin, with anti-age liposomes. It possesses decongestive and refreshing effects, working efficiently against eye-bags, softening and smoothing the wrinkles around eyes and lips. Protects against solar radiation.



Most important active ingredients

Liposomes:	Transmitting active ingredients.
Collagen:	Provides flexibility, elasticity and tonicity.
Elastin:	Elasticity and firmness.

Instructions

Apply on the area to be treated and massage softly with fingertips. It can be used at any time of the day, even on make-up. Provides coolness and relief to the skin. Avoid direct eye contact.

Presentation

Bottle with dispenser of 30 ml.

BIO COLLAGEN SILK with Q₁₀ - 05230

Flaccid and dehydrated skin

Indications

Biological with a pleasant silky texture that is especially indicated for skin types that show signs of dehydration, flaccidity and cutaneous dryness because of the content of Collagen and Coenzyme Q₁₀. Continuous use fights against premature ageing and protects against external aggressions.

Its formula includes fruit oils like the Persea Gratissima, belonging to a tropical fruit that contains - among others - Phytosterols and Vitamin A, D and E, which are important allies to fight cutaneous ageing.

Most important active Ingredients

Hydrolyzed Collagen: Stimulates the formation of new skin fibres. Regulates the pH-skin factor.

Coenzyme Q₁₀: Reactivates the cellular metabolism. Protects the skin against free radicals.

Cyclomethicone &

Dimethiconol: Emollient and moisturizing.

Persea Gratissima Oil: Anti-ageing. Vitamins A, D and E.

Calendula Officinalis: Regenerating. Decongesting.

Triticum Vulgara Oil: Protects the skin.

Instructions

Apply at night, after a profound cleansing of the skin, while realizing a sliding massage on the area to be treated. If necessary, the Collagen Synergy Cream can be applied subsequently.

Presentation

Bottle with dispenser of 30 ml.



TOP COLLAGEN MASK TREATMENT with COENZYME Q₁₀ - 05287

Collagen Veil

Indications

This treatment has been especially developed for those skin types with signs of ageing, lack of tonicity, too much sun exposure, or lifeless skin.

Reactivates the cellular metabolism, increases the hydration and firmness, revitalizes and recuperates the elasticity of the epidermis.

Most important active ingredients

Collagen Gel

Marine Collagen: Slows down cutaneous ageing and improves the superficial morphology.

Aloe Vera: Emollient, moisturizing and anti-inflammatory.

Biological with Coenzyme Q₁₀.

Coenzyme Q₁₀: Reactivates the cellular metabolism and provides an energetic improvement of the skin cell.

Vitamin E: Anti-free radicals.

Avocado Oil: Balances the composition of the cutaneous lipids.

Marine Collagen: Slows down cutaneous ageing and improves the superficial morphology.

Moisturizing Tonic

Chamomile: Calming and decongestant.

Marshmallow: Smoothing and emollient.

Instructions

Cleanse the area to be treated and extend the collagen gel onto face and neck. Place the veil on the gel and mould it onto face and neck. Leave it to work for 20 minutes. Withdraw the veil and realize a soft massage during 5 minutes, with the leftover gel. Remove leftover product, if any, with some tonic lotion and apply the Biological product Q₁₀. Accomplish a soft massage until total absorption of the product.

Treatment Frequency

Shock Treatment: one application weekly (during one month).

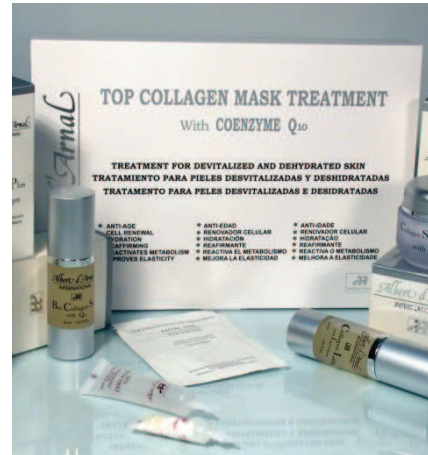
Continue the treatment one more month, once every 15 days.

Presentation Pack:

Collagen Gel: 6 tubes of 17 ml. each.

Biological with Coenzyme Q₁₀: 6 tubes of 4 ml. each.

Moisturizing Tonic: 6 envelopes of 10 ml. each.



VITAMIN BIPHASIC LOTION - 01171

Devitalized skin

Indications

Lotion/emulsion in two phases, to cleanse and tonify mature and devitalized skin.

tratamiento, por el aporte vitamínico solubilizado (A, E, F, H y B₃) y el Extracto de Castaño de Indias. Ejerce una acción protectora por su contenido en Extracto de Ginkgo Biloba.

Hydrates and nourishes the skin during cleansing and leaves it toned and fresh for further treatment, because of the solubilized vitamin contribution. (A, E, F, H and B₃) and the Indian Horse Chestnut extract. Protective action because of the Ginkgo Biloba extract.

Instructions

Apply with cotton ball and realize a small circular massage.

Avoid eye-contact or mucous membranes at any time.

Remove excess with a cotton stick moistened with water.

Shake product well before use.

Presentation

Bottle of 200 ml.



ORCHID SKIN LINE

DEVITALIZED AND FLACCID SKIN

GOLDEN CAVIAR – 01188 / 02211

*Lifting Cream
With Microspheres of Vitamin E*

Indications

Cream / Gel with important lifting effect, restructures and moisturizes the dermis. Based on Caviar Extract, Siberian Ginseng Extract and Glycoprotein/Polysaccharides extracted from Soya, protect the dermis from premature ageing. Stimulates the cellular metabolism in mature and sensitive skin.

Most important active ingredients

Caviar Extract:

Hydro Principles and Liposoluble. It has a conditioning, reaffirming and remineralizing effect and a great similarity with the dermis.

Liposoluble Vitamins A (Retinol) and D:

Cellular rejuvenating and nutritious.

Siberian Ginseng (extracted from the root):

Reaffirming and lifting properties.

Soya Glycine:

Stimulant of the dermal molecules that contribute to reaffirm the skin.

Instructions

Cleanse skin correctly and apply cream daily while accomplishing a light massage.



Presentation

Jar of 50 ml. and Bottle with dispenser of 250 ml.

ELIXIR TONIC - 01189

Lifting Tonic Lotion

Indications

A gentle tonic elixir to firm and normalize pH-skin factor.
Recommended to moisten the Caviar Veil.

Most important active ingredients

Hamamelis extract:	Calming and vein constrictor.
Rose water:	Refreshing and toning.
Allantoin:	Soothing and Moisturizing.

Instructions

Moisten the area to be treated and apply the CAVIAR VEIL.
Moisten the VEIL with cotton balls or a clean powder puff
drenched in tonic, adapting it to the area with light touches.



Presentation

Bottle of 250 ml.

GOLDEN CAVIAR VEIL - 05296

Veil lifting Mask

Indications

This product uses a matrix of collagen as a carrier of Caviar extract, which is a powerful anti-ageing agent. It has outstanding moisturizing properties (due to the high capacity of moisture retention).

Most important active ingredients

Collagen biomatrix:	Moisturizer and smoothing. Anti-wrinkle.
Caviar Extract:	Cell renewal by stimulating the blood circulation, protecting against free radicals and reinforcing the skin's natural defenses.

Instructions

Remove make up from the eyes, face and neck. Tone with **ELIXIR TONIC**.

1. Apply **SVELT PLUS PEELING GOMMAGE** and leave for three minutes. Work the product another three minutes, moistening your hands with **ELIXIR TONIC**. Leave another three minutes and remove with linen cloth moistened in warm water, perfumed with Sandalwood Essential Oil (*optional*). Total 9 minutes.
2. When the skin is completely clean, moisten the area to be treated with **ELIXIR TONIC** and apply the **CAVIAR VEIL**, adapting it onto face and neck with small touches by means of a clean powder puff, moistened with **ELIXIR TONIC**. Leave for 20 minutes and then remove.
3. Finish with a relaxing massage with **GOLDEN CAVIAR CREAM**, to which 3 drops of Sandalwood E.O. have been added (*optional*).

Presentation

Box with 6 veils.



T. BOTU LIKE LINE

SKIN WITH EXPRESSION WRINKLES

T. BOTU LIKE TREATMENT AA[®] with ARGIRELINE[®] -05298

Anti-wrinkle

Indications

Attenuates and avoids muscle contraction, preventing wrinkles and cutaneous stigmas that appear over the passage of time.

Most important active ingredients

T. BOTU LIKE CREAM

Argireline 3%:	Anti-wrinkle
Palmitoyl Pentapeptide-3:	Anti-wrinkle
Wheat Protein:	Tensor
Bisabolol / Incense Extract:	Soothing
Rose Hip Oil, Macadamia Oil,	
Avocado Oil:	Anti-aging
Vitamin E:	Anti-oxidant

T. BOTU LIKE SERUM FORTE

Argireline 3%:	Anti-wrinkle
Palmitoyl Pentapeptide-3:	Anti-wrinkle
Wheat Protein:	Tensor
Biosaccharides:	Moisturizers
Propylene Glycol:	Filmogenic moisturizer
Prunus dulcis:	Smoothes the skin. Anti-wrinkle lifting effect



Instructions

See instructions inside box.

Presentation

- 4 Tubes of Plastic Peeling of 17 ml. each.
- 4 Gauze pads
- 4 Applicator bottles of BOTU SKIN CREAM of 5 ml. each.
- 4 Bottles of BOTU SKIN SERUM FORTE of 2, 5 ml. each.
- 4 Syringes



T. BOTU LIKE CREAM AA[®] with ARGIRELINE[®] - 01190

Anti-wrinkle

Indications

Restructuring lifting cream, based on one of the greatest discoveries in the beauty world: **ARGIRELINE[®]** (anti-aging Hexapeptide). Attenuates muscle contraction, preventing cutaneous stigmas that appear over the years. It also contains, in synergetic action, tensing, hydrating and anti-wrinkle agents.

Most important active ingredients

Argireline [®] 3%:	Anti-wrinkle
Palmitoyl Pentapeptide-3:	Anti-wrinkle
Wheat Protein:	Tensor
Bisabolol / Incense extract:	Conditioners
Rose Hip Oil, Macadamia Oil,	
Avocado Oil:	Anti-ageing
Vitamin E:	Anti-oxidant



Instructions

After cleansing and toning face, apply a thin layer of the product and massage until completely absorbed. To be used in the morning, as expression wrinkles are mostly formed during the day.

For oily skin, apply at night.

Presentation

Jar of 50 ml.

T. BOTU LIKE SERUM AA[®] with ARGIRELINE[®] - 05299

Anti-wrinkle

Indications

Gel serum of easy application. Due to its content of 2% **ARGIRELINE[®]**, active tensor, hydrating and anti-wrinkle agents, reduce their depth, caused by the contraction of the facial muscles, especially those that appear on the forehead and around eyes and lips.



Most important active ingredients

Argireline [®] 2%:	Anti.wrinkle
Palmitoyl Pentapeptide-3:	Anti-wrinkle
Wheat Protein:	Tensor
Biosaccharides:	Moisturizers

Instructions

After a profound cleansing of the skin at night, apply a small amount of the product onto entire face and neck and perform a light massage, concentrating on the deepest wrinkles. In case of dry skin, use the Botu Skin Cream after the serum.

Presentation

Bottle with dispenser of 30 ml.

TOP WHITENING LINE

DEPIGMENTING, CLARIFYING, ANTI-AGE

TOP WHITENING CREAM With Gatuline® - 01225

Indications

Fluid cream with double effect. Indicated for depigmentation or sun spot removing treatment, with the purpose to obtain a uniform and luminous skin tone.

The Collagen content transforms it into an anti-wrinkle product that stimulates cellular renovation, it regulates the pH-skin factor, the excessive queratine and protects the fibroblastic membrane from oxidation. Also contains solar protecting factor.

Most important active ingredients

Aspergillus Ferment - Licorice Extract (Gatuline ®): Depigmenting Element.
Tirosinasa Inhibitor.

Raspberry + Lactic and Malic AHA Extract: Cellular renovation.

Chemical filter UVB-A + Physical Filter of Titanium Dioxide: Protective.

Marine Collagen: Slows down ageing of the skin. Great capacity of moist retention of the skin. Corrects the superficial morphology.

Instructions

After a correct cleansing of the skin, a generous quantity of the product should be applied on the area to be treated. Realize a light massage, especially insisting on the pigmented areas, where the massage should be done a little more energetic.

Apply the cream in the morning and at night during the whole treatment and especially after the summer season, when pigmentation is activated by the sun.

It is also a very suitable product for the dark age spots on hands.

Presentation

Tube of 50 ml.



TOP WHITENING MASK With Gatuline® - 04225

Indications

Emulsion / Cream Mask that spreads easily. Because of its active elements and Gatuline® (powerful depigmentation ingredient), it becomes a multi-faceted product that helps to clarify, moisturize and reaffirm the skin.

Most important active ingredients

Aspergillus Ferment-Licorice Extract (Gatuline®): Tyrosinase Inhibitor. Active depigmenting element.
Silk Protein: Anti-wrinkle factor.
Avocado Oil: Nutritious.
Sweet almond Oil: Moisturizing and Soothing.
Karité Butter: Protective.
Wheat Germ: Anti-free Radicals.
Sodium Hyaluronate: Regulates the pH-skin factor.
Elastin Amino acids: Reaffirms the dermal tissue.

Instructions

Cleanse skin profoundly. Apply a generous layer of the product at night onto face, neckline and hands, twice per week, as in shock treatment.

Leave the product to work during 15 minutes, while realizing a massage until the total absorption of the product; or remove with abundant water and subsequently apply the Top Whitening Cream. The product can be used all year around or whenever a uniform and luminous skintone is desired.



Presentation

Tube of 50 ml.

TOP WHITENING TREATMENT With Gatuline® - 05225

Indication

Bio-Enzymatic Clarifying Treatment, which is especially indicated for skin with pigmentation, sunspots, etc. Reaffirming and moisturizing.

As the product is effervescent, it activates the elimination of impurities of the horny skin layer. The Collagen content of the cream (*apart from the active depigmenting elements*), stimulates the cellular renovation, regulates the pH-skin factor and protects the fibroblastic membrane from oxidation. The reaffirming, depigmenting and clarifying properties of this Mask are basic, in order to obtain the desired result at the end of the treatment.

Presentation

TOP WHITENING CREAM	– 50 ml.
TOP WHITENING MASK	– 2 x 50 ml each.
TOP WHITENING ENZYME POWDER	– 6 x 0,05 ml each.
TOP WHITENING LOTION	– 6 x 6 ml each.



ADN + VITAMIN C LINE

ALL TYPES OF SKIN

ADN + VITAMIN C with ALOE VERA.HYDRATING CREAM. SPF 6 – 01181 / 02230

Integral day cream. All types of skin.

Indications

Integral day cream, with protective component against daily aggressive agents, because of its anti-oxidant properties in synergy with Vitamin C. The Aloe Vera Gel regenerates and regulates the pH-skin factor balance. Because of its special formula, it works like a multi-function cream and adapts to the necessities of each skin type.

Most important active ingredients

Marine DNA:	Repairing and anti-oxidant.
Aloe Vera Gel:	Repairing and regenerative.
Squalene:	Emollient.
Vitamin C:	Anti-free radicals.



Instructions

Apply daily in the morning, after a correct cleansing, while accomplishing a soft massage on face and neck, until its total absorption.

Presentation

Jar of 50 ml and Bottle with dispenser of 250 ml.

ADN + VITAMIN C with SILK.NIGHT REPAIR. - 01182 / 02182

Night Repair Cream

Indications

Integral night cream with Marine DNA, as a nutritional component for the epidermis, that restores the balance of the extra-cellular components formed by Collagen, Elastin, Fibronectin, etc., which are damaged by environmental factors. The emollient lipids, integral base of the emulsion, are profound vectors of the repairing and revitalizing components of the skin during the night.



Most important active ingredients

Marine DNA:	Repairing and anti-oxidant.
Revitalin:	Regenerating, repairing and oxygenating.
Silk Protein:	Flexibility and smoothing.
Vitamin C:	Anti-free radicals.
Marine Collagen:	Moisturizing and anti-wrinkles.
Milk Protein:	Relaxing the skin, anti-stress.

Instructions

Apply every night, after a correct cleansing, while accomplishing a soft massage.

Presentation

Jar of 50 ml. and Bottle with dispenser of 250 ml.

NEOVITAMIN C - 05297

Facial Bio-reactivation

Indications

Fluid, low viscosity gel that is mixed with Ascorbic Acid (Vitamin C) to revitalize, tighten and hydrate all types of skin.

Most important active ingredients

Vitamin C (Ascorbic acid):	Anti-oxidant, rejuvenator and mild skin lightener.
Grape seed Oil:	Emollient, anti-oxidant, moisturizing and hydrating.
Essential Orange Oil:	Toner, revitalizing and anti-stress.

Instructions

Follow the instructions on the package and apply a few drops, lightly spreading them over face and neck. Apply in the morning and/or at night, as desired.

Presentation

Box of 4 ampoules of 5 ml. each.



AHA FRUIT FORTE COMPLEX LINE

ASPHYXIATED, ROUGH SKIN WITH SPOTS

INTENSIVE REPAIR CREAM – 01115 / 02115

All types of skin

Indications

Emulsion with easy absorption for all skin types. It contributes to the protection and skin balance after a superficial exfoliation treatment. It works partly with regenerating elements, like Tepezcohuite or Mimosa Tenuiflora and partly with active plant-extracts, inhibiting the destruction of the elasticity of the skin fibres.

Most important active ingredients

Mimosa Tenuiflora Extract:	Repairing the cutaneous surface.
Glycolic Acid:	Cellular regenerator.
Soy Protein:	Restructuring the epidermis.
Bisabolol:	Anti-inflammatory.

Instructions

Apply daily on face and neck until complete absorption.

Presentation

Jar of 50 and 250 ml.



GLYCO GEL - 05115

All types of skin

Indications

Fluid gel lotion, indicated for all skin types, which allows to support a light exfoliation action of the cornea skin layer because of the Alpha-Hydroxyacid. It regulates the cell-renewal and contributes vitamin elements and protection against free radicals during the day.



Most important active ingredients

Glycolic Acid:	Cellular regenerator.
Liposomes:	Transmitting Action.
Vitamin A:	Slowing down wrinkle formation.
Vitamin E:	Anti-free radicals.

Instructions

Apply the Glyco Gel, after a profound cleansing and tonification of the skin with products according to skin type. Leave it to work during a few minutes until its total absorption and continue to apply the usual day cream, followed by make-up, if desired.

Presentation

Bottle with dispenser of 50 ml.

INTENSIVE EXFOLIANT - 04215

All types of skin

Indications

Fluid gel solution for all types of skin, based on Glycolic Acid in β -Cyclodextrin and other Alpha-Hydroxyacids (Lactic, Citric and Tartaric) that progressively diminishes the thickness of the horny layer that provides a balanced cellular renovation. Helps to reduce wrinkles, while smoothing the skin and providing a clearer and a more flexible aspect.

Most important active ingredients

Glycolic acid / lactic acid / citric acid / tartaric acid:

The objective is: to remove dead skin cells; regenerate the collagen fibres; reduce deep wrinkles and to clarify and soften dermal spots.

Instructions

Apply the content of one ampoule and allow the product to work during 10 minutes. Avoid eyes and mouth. Remove leftover product with a wetted sponge.

Presentation

Box with 12 ampoules of 3 ml. each.



REAFFIRMING FRUIT WATER

Lemon and Grape - 01178

Indications

Plant water extracted from fruits, 100% ecologic, balanced and bio-compatible. It has an excellent affinity with the skin and provides minerals and trace elements. The essential oils of lemon and grape, provide a dynamizing cellular action and reaffirming of the skin tissue. After a correct cleansing, the application helps to improve the skin's receptivity and the efficacy of the active ingredients in treatments. Hydrates and refreshes the skin.

Most important active ingredients

Essential Oil of Grape : Revitalizing cellular action.
Essential Oil of Lemon: Reaffirming the skin layer.
Mineral salts and trace elements: Working as enzyme catalyst



Instructions

Spray a fine mist in the morning to refresh the skin or to fix make-up. Spray at night, to eliminate stress.

Presentation:

Bottle of 200 ml.

REGENERATIVE FRUIT WATER

Apple and Grapefruit – 01179



Indications

Plant water extracted from fruits, 100% ecologic, balanced and bio-compatible. It has an excellent affinity with the skin and provides minerals and trace elements. The essential oils of Apple and Grapefruit, properties of bio-stimulation of epidermal cells, improve the skin-cell regeneration. After a correct cleansing, the application of this product helps to improve the skin's receptivity and the efficacy of the active ingredients in treatments. Hydrates and refreshes the skin.

Most important active ingredients

Essential Oil of Apple: Anti-oxidant, anti-ageing.
Essential Oil of Grapefruit: Anti-free radical, slightly clarifying.
Mineral salts and trace elements: Working as enzyme catalyst.

Instructions

Spray a fine mist in the morning to refresh the skin or to fix make-up. Spray at night, to eliminate stress.

Presentation

Bottle of 200 ml.

CHRONOBIOLOGICAL LINE

CHRONOBIOLOGICAL DAY CREAM with Imudilin® - 01117

Indications

Day cream formulated with Imudilin®. This cream delays the passage of time of the skin. The active ingredient stimulates the cutaneous immune system and the cellular metabolism, in order to restore the defences.

Imudilin® is able to adjust the timetable of our genes which controls the circadian cycles (bio-rhythms), in order to profit from the beneficial sunlight, without its disadvantages.

Most important active ingredients

Imudilin®:	Stimulating, regulator of the circadian cycles.
Juvenine:	Energizing, improves cellular respiration.
Tocopherol Acetate:	Anti-oxidant.
Vitamin F Acetate:	Essential fatty Acid.
Pantenol:	Moisturizing agent.

Instructions

After tonifying the skin, a small amount of the product should be applied daily -in the morning- while realizing a soft massage, until its total absorption.

Presentation

Jar of 50 ml.



CHRONOBIOLOGICAL NIGHT EMULSION with Imudilin® - 05117

Indications

This serum delays the passage of time of the skin and is based on the principles of Chronobiology (study of the biological rhythms). The incorporated active ingredients of this distinctive formula will improve the regenerating mechanisms of the epidermis cells.

Most important active ingredients

Juvenine:	Energizing, Oxygenating.
Aroleat Samphira:	Anti-wrinkles.
Imudilin®:	Stimulating, regulates of the circadian cycles. (Bio-rhythm)
Retinol Palmitate:	Regenerating, anti-wrinkles.

Instructions

After cleansing and tonifying the skin, a small amount of product should be applied at night time, while realizing an energetic massage until its total absorption.

Presentation

Bottle with dispenser of 30 ml.

CHRONOBIOLOGICAL SPECIAL CREAM FACE & NECK - 01118

Moisturizer / Reaffirming for face, neck and breasts.

Indications

Refreshing, reaffirming and moisturizing cream especially indicated for face, neck and breasts. Because of the Chitosan PCA and Extensin content, this cream provides the necessary hydration, in order to protect and repair the dermis. The active ingredients of the grape seed extract, powerful anti-free radical, in synergy with elastin and organic silicon, provide firmness to the skin tissue.

Most important active ingredients

Chitosan:	Increases moisturizing factor.
Elastin:	Elasticity and reaffirming.
Grape Seeds:	Protecting and anti-free radicals.
Organic Silicium:	Reaffirming.



Instructions

Continuous daily application is recommended after solar overexposure and/or stress with visible skin fatigue and appearance of eye-bags or flaccidity. Extend onto face, neck and breasts until its total absorption.

Presentation

Jar of 50 ml.

CHRONOBIOLOGICAL LIQUID CRYSTAL EYE CONTOUR - 01120

Indication

Gel with Liquid Crystals and Vitamin E, indicated as a treatment for tired Looking, dull and flaccid skin with little wrinkle. Avoids very effectively free radical formation. It is an extraordinary moisturizing regulator, improves flexibility and cellular cohesion while restructuring the cutaneous micro-relief. Possesses stimulating properties of the respiratory metabolism of the cutaneous cells; has a detox effect, it is bio-energetic activator and repairs the skin cells.



Ingredientes activos más importantes

Melidran:	Moisturizing.
Vitacel:	Metabolic Activator.
Firmogen:	Reaffirming.
Vitamina E:	Anti-oxidant.

Instructions: Extend gel softly on the eye-contour area with middlefinger while following the direction of the muscular fibers.

Presentation: Jar of 15 ml.

CHRONOBIOLOGICAL VOLUMIZING GEL-CREAM - 01121

Indications

This product has been formulated with special active ingredients, Organic Silicium and Hyaluronic Acid that help to improve cellular cohesion of the skin and enhance its flexibility. The filling effect on the skin wrinkles helps to recover the lost volume due to age and external aggressions. Provides turgidity.

Instructions

After toning the skin, apply a small amount of the gel-cream until total absorption of the product.

Most important active Ingredients

Aloe Vera:	Protecting, moisturizing and regenerative.
Organic Silicium:	Reaffirming, recuperating.
Hyaluronic Acid (2%):	Moisturizing.
Retinol:	Natural Anti-oxidants.
Hydrolyzed Soya:	Cellular cohesion, flexibility.



Presentation

Tube of 50 ml.

CHRONOBIOLOGICAL INTEGRAL REAFFIRMING TREATMENT – 05118

Indications

This treatment is especially indicated for flaccid and dehydrated skin of face, neck and bust.

The benefits of the active Ingredients, present in our formula, will result in a radiant and luminous complexion, recovering its firmness and natural beauty, due to the Volumizing and filling effect.



Instructions

Cleanse the skin to be treated.

Apply Chronobiological **ENZYMATIC PEELING** onto face, neck and/or bust and leave the product to work for 5 minutes (avoid any eye contact). Rinse with lukewarm water.

Tone the skin with Natura Essential **TONIC LOTION 'S'**.

Extend enough quantity of the Chronobiological **VOLUMIZING GEL-CREAM**, in order to give an energetic massage, until the product has been totally absorbed by the skin.

Apply the Chronobiological **COLD GEL MASK** and in continuation place a facial gauze, moistened with Natura Essential **TONIC LOTION** on the cold gel mask. Leave it on for about 15 minutes.

Remove the mask and apply Chronobiological **SPECIAL CREAM**, by giving a gentle massage, until total absorption of the product.

Presentation

Box with 6 Treatments.

REGENERATIVE LINE

SNAIL CREAM – 01134

With Helix Aspersa, Aloe Vera & Hyaluronic Acid. Anti-ageing

Indications

Cream / emulsion for all types of skin, with Concentrate of slimy secretion of Snails, Aloe Vera and Hyaluronic Acid. A unique combination of selected assets because of its regenerative properties for the dermal tissue, immediate hydration, while soothing wrinkles and improving the elasticity of the skin. Contains solar filters.

Most important active ingredients

Helix Aspersa:	Regenerates the dermal tissue.
Aloe Barbadensis:	Protective and regenerative.
Hyaluronic acid:	Regulates the pH-skin factor.
Allantoin:	Cellular regeneration.

Instructions

Apply Cream daily in the morning and/or at night, after cleansing and tonifying face and neck profoundly. Realize a soft massage until total absorption of the product.

Presentation

Jar of 50 ml.



PEELINGS

CELL-RENEWAL

SVELT PLUS PEELING GOMMAGE - 04210

All types of skin. Facial and corporal.

Indications

Peeling that descales the impurities of the skin, eliminates dead skin cells, while improving the cellular renovation. Provides a refreshing effect.



Most important active ingredients

Paraffin:	Osmotic film and smoothing.
Polyethylene:	"Scrub" effect.
Menthyl Lactate:	Refreshing and soothing

Instructions

Can be applied as a Gommage. Remove the product after a few minutes while rubbing with fingertips or with scrub-effect. Finish treatment by applying an appropriate tonic lotion.

Presentation

Tube of 200 ml.

PLASTIC PEELING - 04211

Sensitive skin

Indications

Renovating cellular action with refreshing effect.
Ideal for sensitive skin.

Most important active ingredients

Polyvinyl Alcohol:	Forms a visco-elastic film.
Moisturizing agent:	Forms a protecting layer on the skin.



Instructions

After a correct cleansing and tonification, only a thin layer of the mask should be applied onto face and neck, with a cosmetic brush. Leave it to work for about 20 minutes and remove with fingertips, starting by the neck. When placing a facial gauze over the Plastic Peeling mask, it will be easier to remove the mask in one piece, as in photo above.

Presentation

Tube of 200 ml.



PEELING GOMMAGE - 04212

All types of skin

Indications

Peeling that descales the impurities of the skin. Eliminates dead skin cells, while improving cellular renovation.

Most important active ingredients

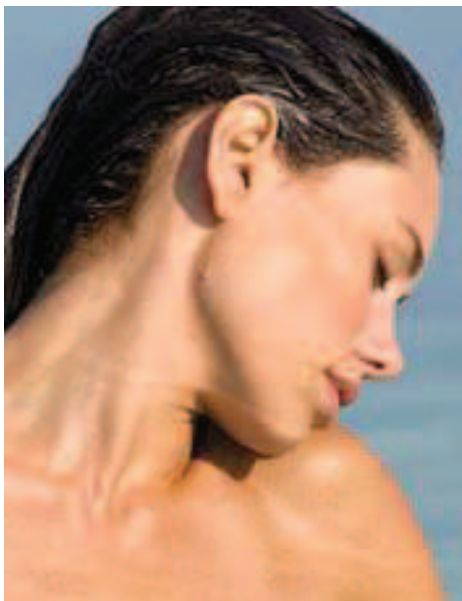
Kaolin: Anti-inflammatory.
Paraffin: Osmotic film and smoothing.

Instructions

Cleanse the skin and apply the peeling on the area to be treated. After approximately 10 minutes, remove the product while rubbing it off with fingertips. Finish treatment by applying an appropriate tonic lotion.

Presentation

Tube of 200 ml.



FACE MASKS

RELAXING MASK – 04104

Dry and sensitive skin

Relaxing mask, refreshing and with balsamic effects.
Suitable for all skin types. Recommended for dry and sensitive skin.

Most important active ingredients

Kaolin:	Desensitizer.
Bisabolol:	Balsamic and restoring effect.
Menthol:	Refreshing and relaxing.

Instructions

Apply a generous layer of the Relaxing Mask after cleansing and toning the area to be treated. Allow the product to work for 20 minutes and remove with cosmetic sponges and abundant lukewarm water

Presentation

Tube of 200 ml.



NEW TENUIFLORA MASK – 04106

Devitalized skin types

Skin-balancing mask, nutritious and protective.

Because of its regenerating effect, it is recommended for devitalized skin types.



Most important active ingredients

Kaolin:	Desensitizer.
Mimosa Tenuiflora Extract:	Regenerating effect.
Bisabolol:	Balsamic and restoring effect.
Menthol:	Refreshing and relaxant.

Instructions

Apply a layer of the New Tenuiflora Mask, after cleansing and toning the area to be treated. Allow the product to work for 20 minutes and remove with cosmetic sponges and lukewarm water.

Presentation

Tube of 200 ml.

CHRYSLIS FIRM MASK – 04108

All skin types

Cream / emulsion of easy application. It restores the elasticity and softness of the epidermis. Because of its formula, the active reaffirming and moisturizing elements are immediately absorbed by the skin.

Most important active ingredients

Avocado and Sweet Almond Oil:	Nutritious.
Karité butter:	Protective.
Wheat Germ Oil:	Anti-oxidant.
Hydrolyzed Elastin:	Reaffirming.
Collagen:	Moisturizing and anti-wrinkle.
Sodium Hyaluronate:	Regulates the pH-skin factor.
Chrysalis Silk Extract:	Anti-wrinkle.

Instructions

Apply a thin layer of the Chrysalis Firm Mask, after cleansing and toning the area to be treated. Allow the product to work for 20 minutes and perform a light massage until total absorption of the product or remove with cosmetic sponges and lukewarm water. Can also be used as a night cream.

Presentation

Tube of 200 ml.



ALGINATOS MASK CA-37 - 04216

All types of skin

Indications

This mask is indicated for dehydrated and devitalized skin types. Very effective, when used in combination with other cosmetic treatments.

Most important active ingredients

Alginatos:	Algae extract and derivative of alginic acid. It's restructuring action has the advantage on the active principles of other products when incorporated in the treatment.
------------	--------------------------------------------------------------------------------------------------------------------------------------------------------------------------

Instructions

Prepare a homogeneous mixture in a glass bowl of the Alginatos CA-37 and tonic lotion without alcohol. Mix quickly together with a plastic spatula and apply immediately onto face or body. Leave the mask to work for about 20 minutes. Can be used for facial and corporal treatments.



Presentation

Jar of 500 ml.

BIOLOGICALS

BIO-SVELTINE MOISTURIZING / CALMING – 05101

Indications

Liquid Biological Solution, which is very adequate for treatments of sensitive and dehydrated skin types. It renovates the hydrolipic level, while recuperating the smoothness and flexibility of the dermis.

Most important active ingredients

AHA Solution:	Cellular Renewal.
Quilaya Extract:	Moisturizing.
Solution of Carbohydrates:	Moisturizing.
Chitosan:	Moist Retention.
Ginkgo Biloba Extract:	Decongestive.
Dipotasic Glicirricinate:	Anti-inflammatory.



Instructions

- Manually: Apply contents of one ampoule and realize soft massages.
- By ionization: Apply solution and use the negative pole.

Presentation

Box with 12 ampoules of 5 ml. each.

BIO-SVELTINE REVITALIZING / ANTI-WRINKLES - 05102

Indications

Liquid Biological Solution, which is very suitable in treatments and prevention, when losing vitality and firmness of the skin.

Most important active ingredients

Milk Protein:	Revitalizing and protective.
Vitamin C:	Anti-free radicals
Serum of queen bee jelly:	Regenerating.
Hydrolyzed Collagen:	Moisturizing and anti-wrinkles.
Hydrolyzed Lupin:	Moisturizing and anti-wrinkles.



Instructions

- Manually: Apply the solution by means of soft massages onto face and neck.
- By ionization: Apply the solution by using the negative pole.

Presentation

Box with 12 ampoules of 5 ml. each.

BIO-SVELTINE REAFFIMING FACE / BREASTS - 05103

Indications

Biological gel solution, with reaffirming and astringent action, indicated for face and breasts. Regulates the pH-skin factor, as well as the firmness and elasticity of the skin.

Most important active ingredients

Sodium Hyaluronate: Reaffirming.
Hydrolysed Elastin: Reaffirming and improving the pH-skin factor.
Extensin: Elasticity.
Hamamelis: Muscular Tonicity.
Organic Silicium: Elasticity.
Horse Tail Extract: Flexibility.

Instructions

Manually: Apply the biological solution onto face, neck and breasts, while accomplishing a soft massage, until total absorption of the product.

By ionization: The content of one ampoule of the biological solution should be applied by means of the negative pole of the iontoforesis apparatus.



Presentation

Box with 12 ampoules of 5 ml. each.

INSTANT BEAUTY - 05261

All types of skin. Flash effect.

Indications

Fatigue and stress affects the face, causes dark circles around the eyes and impedes the skin to look relaxed and attractive. Instant Beauty erases any trace of fatigue, returning in very little time this fresh, rested and lively look, while leaving the skin soft and smooth. Gives brightness and simultaneously prepares the skin for a perfect make-up.



Most important active ingredients

Collagen: Provides elasticity, tonicity and flexibility of the skin.
Elastin: Provides elasticity and firmness.

Instructions

Apply the content of half an ampoule onto face and neck, distributing it evenly with fingertips, by means of circular massages. Once product is absorbed, make-up can be applied, if so desired. Ampoule can serve for two applications. Close well after first use.

Presentation

Box with 2 ampoules of 4 ml. each.

BIO-SVELTINE REDUCING / REAFFIRMING - 05104

Indications

Biological solution with jelly aspect, which is very adequate for treatments of sensitive and dehydrated skin types. It renovates the hydrolipic level, while recuperating the smoothness and flexibility of the dermis.

Most important active ingredients

AHA Solution:	Cellular Renewal.
Quilaya Extract:	Moisturizing.
Solution of Carbohydrates:	Moisturizing.
Chitosan:	Moist Retention.
Ginkgo Biloba Extract:	Decongestive.
Dipotasic Glicirricinate:	Anti-inflammatory
inflammatory.	

Instructions

Manually: Apply contents of one ampoule and realize soft massages on face and neck..

By ionization: Apply solution and use the negative pole.

Presentation

Box with 8 ampoules of 15 ml. each.



BIO-SVELTINE ANTI-CELLULITE - 05105

Indications

Lipid reducing Complex, which helps to smoothen and to reduce lipid accumulation and liquid retention in the subcutaneous tissue.

LIPO-DISOLV (pink): works directly on the accumulated fat, while dissolving and destroying it.

LIPO-ABSORB (yellow): eliminates the lipid remains in the adipose tissue, freed during the first action.

Most important active ingredients

LIPO-DISOLV (rose): derivative of Organic Mud;
Lipolitic action (Dehydrogen).
Methyl Nicotinate: Thermo-active

LIPO-ABSORB (yellow)

Methyl Nicotinate: Thermo-active.
Asian Centella: Reaffirming.
Caffeine: Activates the circulation.
Iodized Extensin: Disintegrates body fat.



Instructions

Manually: alternative sessions of the biological LIPO-DISOLV (pink) and LIPO-ABSORB (yellow) should be applied while carrying out an insistent massage.

By ionization: alternative sessions of the biological LIPOSOLV-BIO (pink) and LIPOSORB-BIO (yellow) during 10 to 15 minutes. Because of the content of Potassium, the product should be ionized by the positive pole.

Presentation

Box with 8 ampoules of 15 ml. each.

BODY LINE

THERMO RELAX - 02224

Muscular contractions

Indications

Gel, especially indicated to fight muscular pains and contractions, sprains, stiff neck and other similar problems. Because of the active ingredients, it provides an instantaneous relief and thermogenic effect while realizing a massage.

Most important active ingredients

Methyl Salicylate:	Anti-inflammatory and anti-Rheumatism.
Pine Essence:	Muscle decontracting.
Rosemary oil:	Sedative and decongestive action of the muscles.
Camphor:	Favours blood circulation and provokes a thermal action.

Instructions

Extend the product on the area to be treated, accomplishing a muscle relaxing massage.

Presentation

Jar of 500 ml.



FRESH ORANGE CREAM – 01143 / 02236

Firm Buttocks / Tight Abdomen

Indications

Cream / emulsion, especially indicated for application on the abdomen area, buttocks and legs. It works on the lipid accumulation and toxins (cellulite); reaffirms the skin tissue and alleviates heavy feeling; while leaving a sensation of pleasant coolness. It contains relaxing properties because of the Essential Oil of Orange.

Most important active ingredients

Horse chestnut:	Anti-edema and vein constrictor.
Flavonoids:	Reducing and reaffirming.
Organic Silicon:	Recuperates the elasticity of the dermal tissue.
Menthol:	Refreshing for its coolness.
Essential Orange Oil:	Regenerating and relaxing.

Instructions

Apply daily, while carrying out a profound massage, beginning by the feet and continuing in upward direction until the groin. Finish with buttocks and abdomen until total absorption of the product.

Presentation

Tube of 200 ml. and bottle with dispenser of 500 ml.



POST-DEPILATION

ALOE VERA SOOTHING GEL- 06310

Dermo protecting and regenerating.

Aloe Vera Soothing Gel, an excellent skin protector and regenerator. It has been proven that its effects penetrate into the hypodermis, while stimulating the regeneration of new skin cells. When used after depilation, whatever method employed, it prevents rashes and redness and quickly closes the pores. Prevents any type of deterioration of the skin.

Most important active ingredients

Aloe barbadensis: Main ingredient in proportion of 50%. Skin protecting and regenerating.
Glycerine derivative: Moisturizer that provides a feeling of comfort and well-being.

Instructions

Apply a generous amount of the product on the area to be treated, whenever the skin requires regeneration, hydration, softening and toning.

Presentation

Bottle with dispenser of 250 ml.



BATH AND SHOWER LINE



BARBADOS BODY MILK - 03200

Moisturizing Body Milk

Indications

Especially recommended after taking a shower or bath in order to prevent dehydration of the skin. Excellent to be used after depilation because of its relaxing and soothing action.

Most important active ingredients

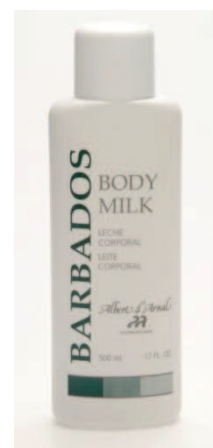
Sweet almond oil:	Emollient. Provides softness and soothes the skin.
Moisturizing factor:	Forms a protecting layer on the skin.

Instructions

Apply on dry skin and make it penetrate while accomplishing a soft massage.

Presentation

Bottle of 500 ml.



BARBADOS HYDRALGA GEL - 03214

Bath Gel with scrub effect

Indications

Bath Gel with anti-cellulite and slimming effect, based on algae and ivy extract. The scrub effect provokes a progressive exfoliation of the skin. The contribution of the vitamins C and E revitalizes and protects the dermis, inhibiting the action of free radicals.



Most important active ingredients

Polyethylene:

Citric Acid:

Marijuana Oats:

Fucus Vesiculosus + Hedera Helix:

Detergents:

Provides Scrub effect.

Cellular renovation.

Soothes and firms the skin.

Slimming Action and exfoliating.

Provides foam, without irritation.

Instructions

To be used when taking a bath or shower, when the skin needs an exfoliation; insisting on elbows, knees and other parts with accumulation of dead skin cells.

Presentation

Bottle of 250 ml.

BARBADOS OIL FIRM - 03215

Reaffirming Bath Oil

Indications

Bath Oil of fine texture that reaffirms and protects the dermis.

Most important active ingredients

Essential Oil of Cypress: Astringent action.

Instructions

Apply oil on humid or dry skin after taking a shower or bath, obtaining different textures. When applied on humid skin it becomes milky and when applied on dry skin it has an oily effect. Does not stain on clothes.

It also can be used when taking a bath, pouring some oil in the water. The water becomes milky, leaving the skin as soft as silk.

Presentation

Bottle of 250 ml.



COLD GEL - 03216

Relaxing Cold Gel for legs.

Indications

Gel with relaxing, hypothermic and purifying action, that produces a sensation of relief due to the plant extract Ginkgo Biloba, of which the active flavonoids help to relax the legs. Its use is recommended, as it stimulates the blood circulation, because of the composition of Menthol, Camphor and Eucalyptus Oil. It can be used without a specific treatment.

Most important active ingredients

Menthol:	Refreshing
Ginkgo Biloba:	Stimulates the cutaneous micro-circulation.
Eucalyptus:	Excellent against pain.

Instructions

Apply Gel and start to make a soft massage beginning by the feet and finishing on the inner part of the thighs. To improve its effect, it is recommended to moisten the area before or after applying the gel. Repeat the application as many times as necessary to achieve the desired relief. Very effective when taking a long-distance flight. Applying cold gel helps to reduce swollen legs.

Presentation

Bottle of 250 ml.



SOLAR LINE

AFTER SUN - 08602

Collagen + Elastin

Indications

Refreshing emulsion that restores hydration of the skin, while protecting it from possible burns, caused by solar radiation. It relieves irritated burned skin, leaving it smooth and relaxed.

Most important active ingredients

Soluble Collagen:	Moisturizing and protective.
Hydrolysed Elastin:	Restructuring the dermal fibres.
Menthol:	Refreshing element.
Mimosa Tenuiflora:	Repairing the cutaneous surface.

Instructions

Apply generously after taking a sun bath. Indicated for irritated or sensitive skin. Massage product until its total absorption.

Presentation

Bottle of 200 ml.



ACCELERATOR COMPENSATING SUN. SPF 15 - 08605

Anti-age. With Vitamin E

Indications

Emulsion that accelerates a quick and durable sun-tan, while avoiding the adverse consequences of solar radiation. It protects the skin against dehydration and anti-free radicals which causes the ageing of the skin.

Most important active ingredients

Tyrosine derivate:	Accelerator of suntan.
Hydrolysed Collagen Protein:	Protective and restructuring.
Solar Filter UVA-UVB:	SPF 15.
Water-proof Element:	Protection while in water.

Instructions

Apply cream before taking a sun-bath to prepare the skin; during sun-exposure; to protect the skin and after, to continue the anti-age treatment and to intensify the obtained sun-tan.

Presentation

Bottle of 125 ml.



ULTRA PROTECTED SUN. SPF 28 - 08609

Facial and corporal. With mineral sun filter. Waterproof.

Indications

Because of its high sun protection factor and its high content of moisturizing and soothing elements, Ultra Protected Sun protects the skin in an effective way, while eliminating skin irritations produced by solar exposure. Hydrates and protects, while preventing the ageing of the skin. Especially indicated for very sensitive and delicate skin-types.

Most important active ingredients

Solar filters: Protection against UV radiations.

Butyrospermum Parkii: Healing.

Instructions

Apply generously by means of soft massages. To improve effectiveness, repeat the application as many times as desired.

Presentation

Bottle of 200 ml.



SUN BLOCK – High Protection - 08610

Anti-age with Vitamin E. Waterproof.

Indications



Protective Cream, especially indicated for skin, sensitive to sun exposure (freckles, pigmentation spots), or for persons who are following a treatment with glycolic acids, (whitening skin line products). Also indicated for sensitive, fragile children skin and for people who are practising outdoor winter- or summersports.

Most important active ingredients

Vitamin E: Anti-free radical and anti-oxidant.

Green Tea Extract: Anti-oxidant and protecting.

Instructions

Apply cream onto face and body 30 minutes before solar exhibition.

It can also be used as a protective day cream, before putting on usual make-up.

Presentation

Tube of 50 ml.

SOLAR SPRAY. SPF 10 - 08611

Non greasy liquid emulsion that moisturizes and protects the skin. It contains Vitamin E, with anti-oxidant and anti-free radical effects. Its quick and easy application provides a pleasant sensation of coolness. The product will be immediately absorbed by the skin, while achieving a uniform suntan.

Most important active ingredients

Solar filters: Protection against UV radiations.
Tocopherol (Vitamin E): Anti-free radical and anti-oxidant.

Instructions

Shake well before use. Spray onto body before taking a sunbath. Repeat regularly, especially after swimming.

Presentation

Bottle of 300 ml.



SUN COLOUR. SPF 15 - 08615

Coloured suntan cream. All types of skin. Waterproof.

This coloured suntan cream of light texture is water resistant. The components that this product contains provide hydration, protection and regeneration to the epidermis. It is a perfect ally for those women who want to protect their skin and look great, during and after taking a sunbath, without having to put on makeup.

Most important active

Ingredients: Tocopherol

(Vitamin E): Anti-free radical and anti-oxidant.

Aloe Vera: Regenerating, softening and healing.

Bisabolol: Anti-inflammatory and toning.

Urea: Hydrating.



Instructions

Apply the cream onto face and neck, before and after solar exposure. It is advisable to apply this cream after using the solarium, to moisturize, intensify and beautify the skin colour.

Presentation

Tube of 50 ml.

SUN LIP. SPF 15 - 08617

Lip Protector

Indications

Nutritious protecting base. Moisturizes and softens the lips, protects against the cold and solar radiation.

Most important active ingredients

Calendula Oil:	Sedative.
Camomile Oil:	Soothing
Aloe Vera:	Emollient.
Tocopheryl Acetate:	Vitamin E.

Instructions

Apply onto lips as many times as necessary for effective protection.

Presentation

Stick of 4 ml.



SPA LINE



SPA ANTI-CELLULITE CREAM - 01135 / 02212

Indications

Hedera Helix, in its Greek variety, helps to eliminate lipids, which were previously treated by iodized compounds, until its dissolution. The association of this plant in relation to feminine problems, dates back to the ancient Greek time, an era in which this plant was considered sacred for its beneficial effects. The organic compounds of the catalytic iodine of the general metabolism favours the normalization of the subcutaneous tissue, when affected by the particular lipodistrophy causing cellulitis.

Most important active ingredients

Tea-Hydroiodide:	Dissolves lipids.
Hedera Helix:	Provokes elimination of degraded lipids.
Camphor:	Unblocks arterial blood, facilitating the oxygenation of the skin tissue.

Instructions

Apply cream daily, making it penetrate until its total absorption. To be used in cabin while making a anti-cellulite massage.

Presentation

Jar of 200 ml and 1000 ml.



SPA REAFFIRMING CREAM WITH RESTRUCTURING SILICIUM - 01141 / 02225

Indications

Thanks to the content of calendula, which is a plant rich in restructuring Silicium, this cream is suitable to prevent atrophic stretchmarks. It works in synergy with the plant oils and the incorporated Extensin. It recovers the firmness and flexibility in abdomen, thighs and breasts.

Most important active ingredients

Organic silicium: Recovers the elasticity and natural form of the dermal tissue.
Wheat Germ Oil,
Carrot Extract,
Calendula Extract,
Calendula Oil: These ingredients provide the regeneration of the skin tissue.



Instructions

Apply daily while carrying out a soft and deep manual massage on thighs, buttocks, abdomen and breasts until total absorption of the product.

Presentation

Jar of 200 ml and 500 ml.

SPA THERMO ACTIVE GEL with OXYGENATION EFFECT - 01160

Indications

Gel with oxygenating effect that contributes a sensitive improvement of the blood circulation in general. Effective and durable treatment of localized cellulitis which avoids the consequences of a bad irrigation of the subcutaneous skin tissue. The thermo-active effect helps the penetration of the active liposome principles.

Most important active ingredients

Imidazolidinyl Urea: Moisturizer.
Methyl Nicotinate: Provoking heat.
Fucus Vesiculosus: Anti-inflammatory.
Hedera Helix: Unblocking toxins.
Asian Centella: Helps to improve the texture of aged skin.
Menthol: Reaffirms the skin, because of its cold effect.
Camphor: Muscular Oxygenation.

Instructions

Apply daily a quantity of gel on the area to be treated, carrying out a massage more or less insistent, until total absorption of the product. A sensation of coolness will be noticed, followed by a sensation of heat. According to the type of skin, a possible redness may occur.

Presentation

Bottle of 250 ml.



SPA NEUTRAL MASSAGE CREAM - 02214

Indications

This cream is formulated with cellular anti-stress effect, due to its content of camphor. Because of its special formula, this cream is very suitable for a perfect body massage in the beauty salon.



Ingredients

Aqua, Paraffinum liquidum, Ceteareth-10, Cera Alba, Stearyl Heptanoate, Cetyl Octanoate, Spermaceti, yristoyl, Dimethicone mineral oil, Lanolin oil, Methylparaben, Phenoxyethanol, Isobutylparaben, Sodium Acrylate, Sodium Acrylasodium, Acryloyldimethyl taurate Copolymer, Isohexadecane, Polysorbate 80, Imidazolidinyl urea, Parfum, Fucus Vesiculosus, EDTA, Bisabolol, Triethanolamine, B.H.A, B.H.T

Instructions

Massage the cream until total absorption of the product.

Presentation: Jar of 1000 ml.

SPA CREAM - SAUNA EFFECT - 02223

Indications

Very suitable in cellulite and obesity treatments. Does not need to be heated before application. Its particular formula has the same beneficial effects as when taking a sauna.

Most important active ingredients

Petrolatum: Paraffinum liquidum: Sauna effect, due to its disintoxicating power.

Paraffin:

Instructions

Apply cream while making a light massage. It will leave a film on the skin that provokes heat and causes perspiration. Wrap the area to be treated with osmotic film and leave it to work for about 20 to 30 minutes.

Presentation

Jar of 500 ml.



SPA MICRONIZED FUCUS - 02227

All types of skin

Indications

For problems of cellulite and obesity in general. It helps to eliminate toxins and reactivates the blood circulation of the dermis. Relaxing effect. Its regenerative action delays the appearance of wrinkles.

Most important active ingredients

Fucus Vesiculosus: Cellular renovation and remineralizing action.

Instructions

For facial and corporal use in treatments of algae-therapy in general.

Presentation

Jar of 1000 ml.



SPA MICRONIZED PURIFYING CLAY - 02228

All types of skin

Indications

To be used in treatments of clay-therapy. Especially indicated for devitalized skin types that need stimulation and remineralization. It is used in treatments to regenerate and reaffirm the skin. Also suitable for greasy and/or problem skin types.

Most important active ingredients

Silicium:	Restructuring the skin
Alumina:	Provides three-dimensional structure
Magnesium:	Analgesic for inflamed articulation
Potassium oxide:	Rebalances comp. ionic subcellular liquid
Sodium oxide:	Rebalances comp. ionic intercellular liquid

Instructions

Several applications and techniques of clay-therapy are possible. Beneficial for facial and corporal masks, applications and techniques as in muscular relaxation and anti-stress techniques. The effect can be improved, when mixed with other products.

Presentation

Jar of 1000 ml.



APPLE MASSAGE OIL – 02218



Indications

Compound of Mediterranean Oils, with soothing and anti-oxidant, regenerative and protective effect. The addition of Green Apple Extract provides a pleasant, and fresh aroma. This product is Ideal to use after any kind of depilation and to massage all types of skin in need of regeneration and extra hydration. Very suitable for treatments in Health Resorts and SPA'S.

Instructions

After depilation treatment: Apply product and realize a relaxing massage.

Presentation

Bottle of 500 ml.

AROMATHERAPY

ESSENTIAL OILS



AROMATHERAPY

Alternative way of medicine that uses Essential Oils and Plant Extracts for special treatments and to study the effects in the body and the mind.

A LITTLE BIT OF HISTORY

The use of Essential Oil goes back around 2,000 years bc. There are testimonials of its use in all civilizations: the Egyptians used the oils in their personal care, as well as - mixed with different spices - to embalm their deads. In the Bible's Old Testament they are mentioned in various passages. Specialized doctors used the oils during the Middle Ages to cure the sick people. During the XVII and XVIII century the tradition stayed the same and, in addition, they served to disguise bad smell. Nowadays, the Essential Oils are part of the natural holistic health.

AROMA THERAPY AND COSMETICS

The essential oils are used in cosmetics, either added to Carrier Oils and applying them directly by means of a massage on the area to be treated, or adding them to creams and lotions.



PERSONALIZED COSMETICS

With the possibility of using Essential Oils complementing Cosmetic Treatments, we are able to work at a much higher qualitative level. Now we can treat the cosmetic problems of the client while emphasizing a personal solution that, without Essential Oils would be less effective.

THERAPEUTIC EFFECTS

Actions:

- Purely physical effect on the problem.
- Energetic Balance.
- Emotional response to the aroma.

Synergy:

- The mixed Essential Oils work in harmony.

Bear in mind:

- Symptoms to be treated.
- Motivated causes.
- Characteristics.
- Psychological factors of the client.

INSTRUCTIONS

Sense of smell:

- Direct inhalation → Fast result.
- Vaporization, diffusion.

Skin:

- Massages, baths, showers, poultices, compress, etc., etc. Results at physical and psychological level.

TOPICAL USE

With local application, a penetration of systematic action will be achieved.

When used in:

- Aesthetics.
- Dermatological Conditions.
- Muscular and Osteo-articular conditions.
- Organ Problems.
- Nervous system conditions.
- Reflex areas.

INSTRUCTIONS

- Pure or very concentrated.
- Added to plant oils.
- Added to cream.
- Added to gel.
- Added to bath water.
- Added to muds, clays or algae.

In massage:

During a good massage we stimulate all corporal functions, along with the additional benefits. The Essential Oils should be used diluted in Carrier Oils, when giving a massage. They always must be cold pressed and 100% pure. Do not mix more than 4 Essential Oils together. The purer the Carrier Oils and Essential Oils, the better the results.

DOSAGE

- For facial treatments use of 5 to 6 drops (*except for cinnamon oil*).
- In corporal treatments use 8 to 10 drops (*except for cinnamon oil*).
- For baths use 10 to 12 drops (*except for cinnamon oil*).
- For children and elderly people use half the dosage.
- For every 50 ml. of a product, use a total of 25 drops (*except for cinnamon oil*).

CONTRA-INDICATIONS

Do not apply the E.O's in the following cases:

- Tumorous areas.
- Cases of cancer.
- Varicose veins, phlebitis, trombosis.
- Serious cardiac and renal conditions (*swollen ankles*).
- On serious bruises.
- On open cuts and wounds .
- When having a fever, nausea and vomits.
- During the first 4 months of pregnancy.

SPECIAL CASES:

- Infants.
- Pregnancies.
- Elderly People.
- Weak people.
- People with any kind of deficiency.

Use the Essential Oils, recommended for each different case, paying attention to contra-indications.



ESSENTIAL OILS

AROMATHERAPY



“One single drop of Essential Oil has all the properties of a plant, obtaining great therapeutic benefits”.

The Power of Essential Oils.

Each skin has its own characteristics. The use of Essential Oils allows personalizing the treatments according to the type of skin.

Carrier Oils.

Carrier or Neutral Oils are those oils of plant origin which serve to dissolve the pure essential oils, providing the correct volume that allows us to either apply the exact quantity on external areas of the skin, or by means of a massage; helping to penetrate the Essential Oils.

***Extra Essential Oils, 100% Pure.**

**Manufactured Oils according to the standards of the International Fragrance Association and Research Institute for Fragrance Materials (RIFM)*

CEDAR (*Juniperus Virginiana L.*) – 2501026

Anti-cellulite, respiratory infection. Regulates greasy skin, fungicide and antiseptic when breathing it in.



Body: Astringent, vessel constrictor, reaffirming. It stimulates the lymphatic circulation.

Skin: Regulator for greasy skin, fungicide. It stimulates hairgrowth.

Mind: Widens consciousness, sedative in case of stress, relaxes deeply and stimulates meditation.

CINNAMON (*Cinnamomum Spp.*) - 2501002

One of the best essences in the aromatherapy, effective in 90% of pathogen bacteria. Aphrodisiac.



Body: Anti-viral, anti-fungal, antiseptic and anti-parasite.

Skin: Provokes redness on the skin, circulation and emmenagogue (*stimulates or favors the menstrual flow*).

Mind: Sleepiness, asthenia, depression.

CLOVE (*Eugenia Caryophyllus*) - 2501004

Anesthetic, antiseptic, anti-inflammatory and overall stimulant.



Body: Arthrosis, gingivitis, flatulence, intestinal spasms, colics and diarrhea.

Skin: Light anesthetic power.

Mind: Positive, stimulant strengthens memory, weakness apathy. Intellectual asthenia.

CYPRESS (*Cupressus Sempervirens*) - 2501003

Phlebotonic, vessel-constrictor, scar healing.



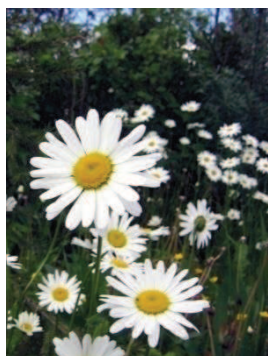
Body: Regulates circulation problems, leg edemas, varicose veins, swellings, heavy legs and hemorrhoids.

Skin: Excessive foot perspiration, oily and hyper-hydrated skin.

Mind: Tranquilizing, stimulating the spirit and eliminates psychological blocks.

CHAMOMILE (*Santolina Chamaecyparissus*) – 2501015

Anti-inflammatory, spasm relief, decongestant, anti-allergy, tonifying, scar healing, digestive.



Body: Intestinal ulcers, gastritis, indigestion, dysmenorrhea, menopause.

Skin: Skin inflammation, sedative, eczema, wounds, ulcers, dermatitis, sensitive skin, burns, and chilblains.

Mind: Calms anxiety, anger and panic.

EUCALYPTUS (*Eucalyptus Globulus*) - 2501005

Especially for the lower respiratory tract, general anti-infection, anti-viral, anti-rheumatic.



Body: Arthritis, rheumatism, muscular pains, bronchitis, asthma, flu and sinusitis.

Skin: Bacterial dermatitis, herpes, burns, lice and insect bites.

Mind: Weakness, headaches, migraines, emotional sedative, clears the head and helps in concentration.

FENNEL (*Foeniculum Vulgare*) - 2501008

Digestive, anti-cellulite, diuretic, anti-spasm, menstrual regulator.



Body: Appetite stimulant, poor digestion, cardio-toning, menopausal problems

Skin: Anti-wrinkle, revitalizer, anti-cellulite (*Cleans subcutaneous toxic wastes and fatty fluids*), liquid retention, increases breast volume, opaque, oily, dull skin.

Mind: Lack of appetite, convalescence, revitalizer, nervous cough.

GERANIUM (*Pelargonium Graveolens L'Herit*) - 2501006

Phlebitis, haemostatic, anti-inflammatory, deodorant and diuretic.



Body: Cellulite, edema, poor circulation, muscular and breast flaccidity, menopause.

Skin: All skin-types, including oily and with acne, broken capillaries, eczema, cuts, burns, insect repellent.

Mind: Nervous tension, anxiety, migraines.

GINGER

Toning, stimulating, anti-septic, thermic, aphrodisiac.



Body Arthritis, rheumatism, muscular pain, fatigue, lumbago, Bad digestion, digestive, having chills, low body temperature.

Skin: Stimulating, toning, cellulitis.

Mind: Fatigue, exhaustion in general, depression, shyness, Irritability.

INCENSE (*Boswellia Spp.*) - 2501009

Sedative, antiseptic, diuretic, astringent, toning, scar healing.



Body: Cystitis, dysmenorrhea, asthma, colds, immune-stimulant.

Skin: Aged, flaccid or mature skin, stretch marks from pregnancy, scars, delays aging of skin.

Mind: Depressions, obsessions, sadness, anguish, paranoia, insomnia, exhaustion.

JUNIPER (*Juniperus communis*) - 2501006

Analgesic, astringent, anti-rheumatic, drainage, healing scars.



Body: Rheumatism and gout. Eliminates accumulation of uric acid, purifier and draining. Purifies the blood, facilitates menstruation and stimulates lymphatic circulation.

Skin: Acne, seborrhea, oily skin, cellulite, dermatitis, eczema.

Mind: Anxiety, insomnia, relaxant. Increases vitality and security.

LAVENDER (*Lavandula Angustifolia*) - 2501011

Anti-infection, anti-inflammatory, hypotensive, nerve stimulant, anti-depressant, sedative, wound healing, diuretic.



Body: Halitosis, laryngitis, lumbago, muscular pain, rheumatism and sprains, abdominal cramps, flatulence and nausea.

Skin: Fungal mycosis, athlete's foot, acne, eczema, dermatitis, psoriasis, inflammation, scars and infected wounds, hair tonic, dandruff, ideal for daily hygiene.

Mind: May be helpful in manic-depressive state. Positive effect in psychological conditions.

LEMON (*Citrus Limonum*) - 2501013

Strengthens natural defenses, anti-infection, anti-septic, general purifier (*venous and lymphatic toning*).



Body: Obesity and weight loss, cellulite, varicose veins, premature aging, hypertension, weak hair, wrinkle prevention.

Skin: Skin eruptions, boils, seborrhea, freckles, brittle nails, calluses, cuts, oily skin with dilated pores. Effective on skin spots.

Mind: Asthenia, general fatigue, permanent state of laxness, refreshing.

LEMONGRASS

Anti-septic, astringent, tonic, anti-fever, deodorant, insecticide, stimulating for production of milk.



Body: Anti-cellulite, blood flow, tired feet.

Skin: Acne, seborrhea, greasy skin, greasy hair.

Mind: Stress, tension nerves, severe headaches.

MANDARIN (*Citrus Reticulata White*) - 2501014

Antiseptic, anti-bacteria, digestive, draining.



Body: Nervous system moderator, digestive toning, antiseptic, liver stimulant, infant stomachache. (*It is considered the best oil for infants and pregnant women*).

Skin: Acne, seborrhea, liquid retention, cellulite, anti-aging, cell regenerator, stretch mark prevention.

Mind: Affliction, apathy, mood differences, irritability, fear, jealousy, confusion, desperation, shyness.

MINT (*Mentha Piperita*) - 2501017

Anti-vomiting, stomach, stimulant, analgesic, anti-inflammatory, vessel constrictor, antiseptic



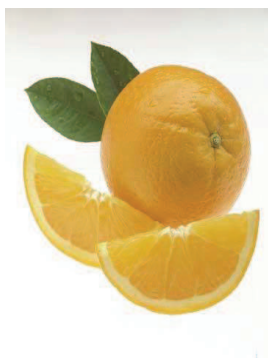
Body: Activates lymph circulation, muscular pain, colic, digestive spasms, migraines, halitosis, asthma, bronchitis, tired legs.

Skin: Acne, dermatitis, inflammations, bites, oily hair and skin.

Mind: Headache, migraines, mental fatigue, fainting, vertigo, nervous stress.

ORANGE (*Citrus Dulcis*) - 2501018

Cell regenerator, cardiac toning and digestive, sedative, anti-depressant and, antiseptic.



Body: Obesity and liquid retention, constipation, colds (*helps Vitamin C absorption*).

Skin: Re-establishes the tone and regeneration of the skin, all skin types, mottled complexion, dermatitis, mouth ulcers.

Mind: Childhood insomnia (*diffusion*), tachycardia, nervous tension, tedium and lack of energy.

ROSEMARY (*Rosmarinus Officinalis*) - 2501021

Analgesic, antiseptic and anti-rheumatism, astringent, scar healing, nerve and toning in general.



Body: Muscular pain, varicose veins, broken capillaries, liquid retention, blood disorders, cholesterol.

Skin: Acne, dermatitis, eczema, aged skin, seborrhea regulator, dandruff, alopecia, insect repellent, lice.

Mind: Mental tension, general blockage and apathy, hypotension, helps in the study and resolution of problems.

SAGE (*Salvia Lavandulifolia*) - 2501022

Sebaceous secretion regulator, hormonal regulator, hypotensive, nerve toning, sedative, spasm relief, anti-septic. It is said that the person having sage in their garden, will never be ill.



Body: Symptoms of menopause, hypertension, muscular pain, childbirth pain, dysmenorrhea, digestive spasms and flatulence.

Skin: Acne, boils and ulcers, dandruff and alopecia, oily skin and hair, hyper-seborrhea, inflammatory diseases, ophthalmic.

Mind: Depression, frigidity, impotence, migraines, nervous tension.

SANDALWOOD (*Santalum Album*) - 2501023

Diuretic, anti-depressant, astringent, scar healing, sedative, toning, anti-bacteria.



Body: Cystitis, diarrhea and nausea, bronchitis, cold, dry and persistent cough, laryngitis and throat inflammation.

Skin: Dry and/or cracked skin of face, hands and feet, wrinkles, acne, oily skin (*ideal in after-shave lotions*).

Mind: Aroma in concentration tasks, depression, insomnia, nervous tension.

TEA TREE OIL (*Melaleuca Alternifolia*) - 2501001

Anti-infection, anti-bacterial and anti-septic



Body: Sores, gingivitis, genital infections, slow circulation and cardiac fatigue.

Skin: Acne, burns, oily skin, skin eruptions, athlete's foot and mycosis.

Mind: Refreshing and revitalizing, nervous depression.

THYME (*Thymus Capitatus*) - 2501024

Anti-germs, anti-bacteria, anti-septic, anti-rheumatic, spasm relief, stimulant of immune system and circulation.



Body: Arthritis, muscular pain, rheumatism, poor circulation, cellulite, obesity, gout, edemas, cystitis, sprains and sports injuries.

Skin: Abscesses, acne, oily skin, dermatitis, eczema, bruises, obesity, gout, edemas, cystitis, sprains and sports injuries.

Mind: Headaches, insomnia, nervous weakness, exhaustion and states of depression.

YLANG-YLANG (*Cananga Odorata*) - 2501025

Skin regenerator, anti-septic, anti-infection, anti-eczema. Circulatory stimulant, toning, anti-depressant, tensile, nerve sedative.



Body: Hypertension, tachycardia, palpitations, liquid retention.

Skin: Oily skin and general skincare, acne, anti-cellulite. Excessive hair growth.

Mind: Depression, nervous tension, (*regulates the supply of adrenaline*). Frigidity, impotence, stress.

CARRIER OILS

AROMATHERAPY

The carrier oils mostly used are:

SWEET ALMOND OIL - 2502001

Moisturizing and soothing.

WHEAT GERM OIL - 2502002

Regenerating and soothing.

CALENDULA OIL - 2502003

Anti-irritating. Regenerating and descongective.





Albert d'Arnal

INTERNATIONAL

www.albertdarnal.com