

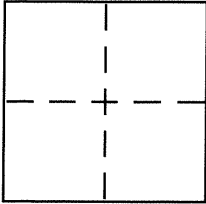
# CORNER RECORD

City of BERKELEY

Document Number CR 4422

County of ALAMEDA, California

Brief Legal Description CITY MONUMENT B1844



## CORNER TYPE

Government Corner ☐ Control ☒  
Meander ☐ Property ☐  
Rancho ☐ Other ☐  
Date of Survey 12-15-10

## COORDINATES (Optional)

N. \_\_\_\_\_  
E. \_\_\_\_\_  
Zone \_\_\_\_\_ NAD27 ☐ NAD83 ☐  
NAD83 Epoch \_\_\_\_\_  
Elev. \_\_\_\_\_  
Vert. Datum: NGVD29 ☐ NAVD88 ☐  
Meas. Units: Metric ☐ Imperial ☐

Corner – Left as found ☒ Found and tagged ☐ Established ☐ Reestablished ☐ Rebuilt ☐

Identification and type of corner found: Evidence used to identify or procedure used to establish or reestablish the corner:

FOUND CITY MONUMENT

~~In compliance with Section 8771 of the Professional Land Surveyors' Act, this corner record is being filed to ESTABLISH the position of an existing monument PRIOR to street or highway construction.~~

A description of the physical condition of the monument as found and as set or reset: \_\_\_\_\_

SET CROSS

SET 5/8" REBAR AND PUNCH

## SURVEYOR'S STATEMENT

This Corner Record was prepared by me or under my direction in conformance with the Land Surveyor's Act on 1-14-11

Signed Robert J. Brunel P.L.S. or R.C.E. No. 4961

## COUNTY SURVEYOR'S STATEMENT

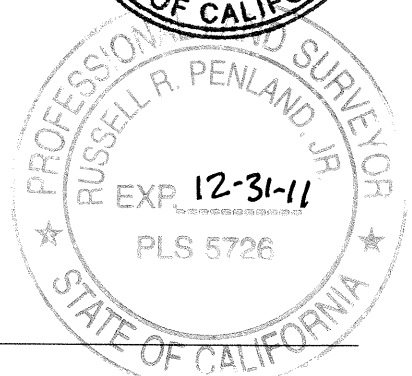
This Corner Record was received 1-21-11

and examined and filed 3-24-11

Signed Russell R. Penland P.L.S. or R.C.E. No. 5726

Title COUNTY SURVEYOR

County Surveyor's Comment \_\_\_\_\_

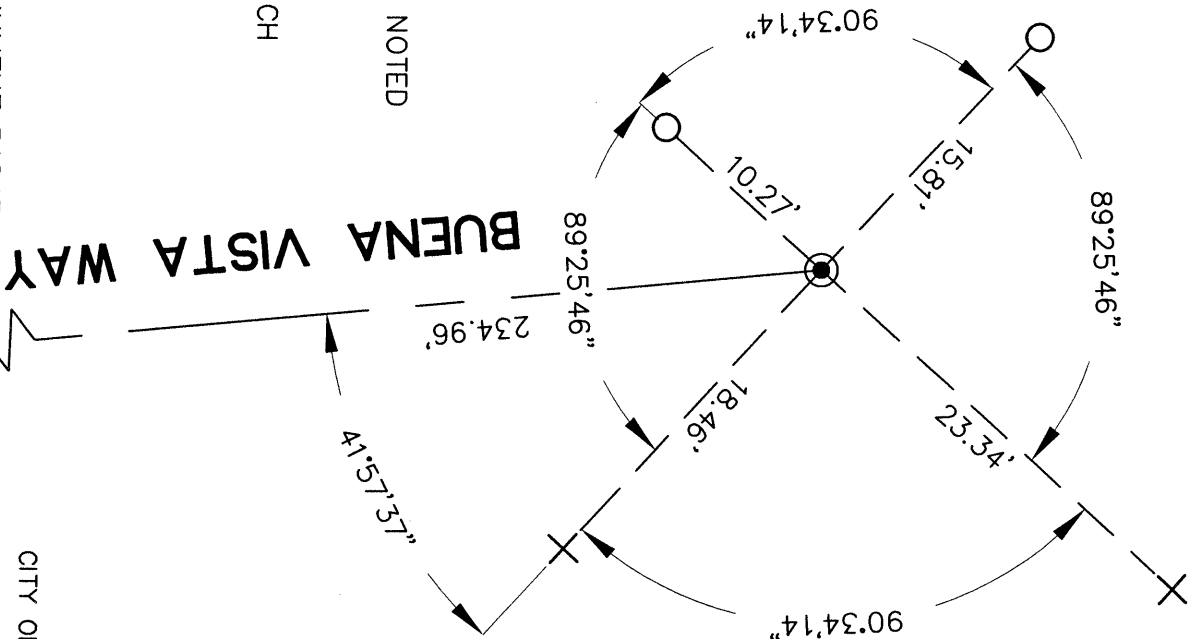


Q436G3



LEGEND

- FOUND CITY MONUMENT AS NOTED
- + SET CROSS
- SET 5/8" REBAR WITH PUNCH



FOUND 1/4" BRASS PIN MONUMENT B1844  
IN CONCRETE INSIDE STANDARD CASTING  
OPPOSITE #2851 BUENA VISTA WAY

**CORNER RECORD**

TO REFERENCE MONUMENT B1844  
OPPOSITE #2851 BUENA VISTA WAY  
CITY OF BERKELEY, COUNTY OF ALAMEDA, CALIFORNIA

DECEMBER 15, 2010

SCALE: 1"=10'

FOUND 3/8" BRASS PIN MONUMENT B1845  
IN CONCRETE INSIDE STANDARD CASTING  
OPPOSITE #2825 BUENA VISTA WAY

F.B. RR-45

BUENA VIRGINIA MONS.DWG

JOB NO. 10-7952