

BK 24 Ps. 56

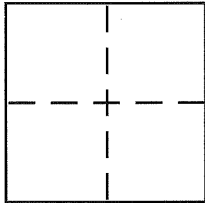
CORNER RECORD

Document Number CR 2712

City of OAKLAND

County of ALAMEDA, California

Brief Legal Description LOT 697 MONTCLAIR HIGHLANDS EXTENSION (5 M 46)



CORNER TYPE

Government Corner ☐ Control ☐
Meander ☐ Property ☒
Rancho ☐ Other ☐
Date of Survey MAY 27, 2006

COORDINATES (Optional)

N. _____
E. _____
Zone _____ NAD27 ☐ NAD83 ☐
NAD83 Epoch _____
Elev. _____
Vert. Datum: NGVD29 ☐ NAVD88 ☐
Meas. Units: Metric ☐ Imperial ☐

Corner – Left as found ☐ Found and tagged ☐ Established ☒ Reestablished ☐ Rebuilt ☐

Identification and type of corner found: Evidence used to identify or procedure used to establish or reestablish the corner:

FOUND CONCRETE MONUMENT PER (5 M 46)

A description of the physical condition of the monument as found and as set or reset:

SET 5/8" REBAR WITH PLASTIC CAP, LS 4961
SET P. K. NAIL WITH BRASS TAG, LS 4961
SET 2" HUB WITH BRASS TAG, LS 4961

SURVEYOR'S STATEMENT

This Corner Record was prepared by me or under my direction in conformance with the Land Surveyor's Act on JUNE 5, 2006

Signed Robert J. Brunel P.L.S. or R.C.E. No. 4961

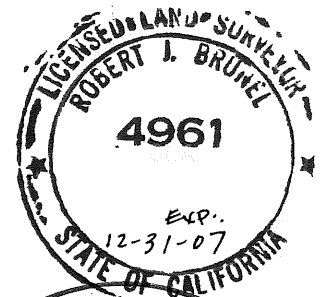
COUNTY SURVEYOR'S STATEMENT

This Corner Record was received 6-8-2006
and examined and filed 7-30-2006

Signed Russell R. Penland, Jr. P.L.S. or R.C.E. No. 5726

Title COUNTY SURVEYOR

County Surveyor's Comment _____

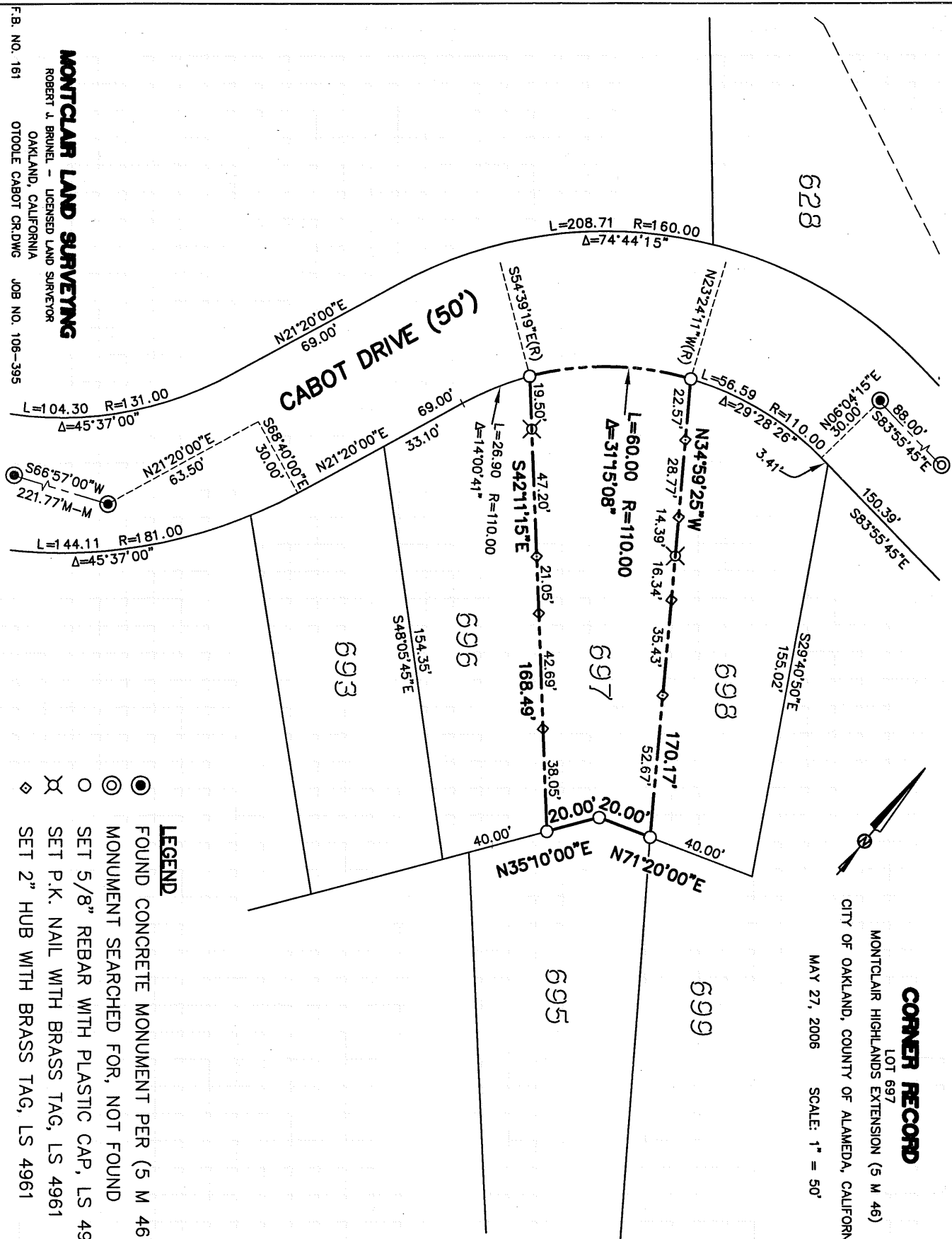


LOT 697

EXTENSION (5 M 46)

OF ALAMEDA, CALIFORNIA

SCALE: 1" = 50'



LEGEND

- ① FOUND CONCRETE MONUMENT PER (5 M 46)
- ② MONUMENT SEARCHED FOR, NOT FOUND
- SET 5/8" REBAR WITH PLASTIC CAP, LS 4961
- ✂ SET P.K. NAIL WITH BRASS TAG, LS 4961
- ◇ SET 2" HUB WITH BRASS TAG, LS 4961

MONICLAF LAND SURVEYING

ROBERT J. BRUNEL - LICENSED LAND SURVEYOR

OAKLAND, CALIFORNIA

F.B. NO. 161 OTOLE CABOT CR.DWG JOB NO. 106-395