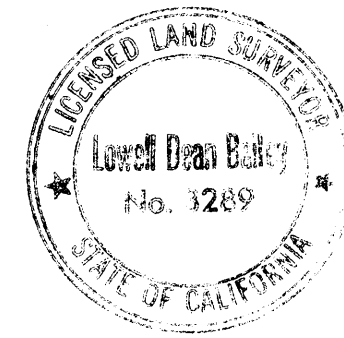
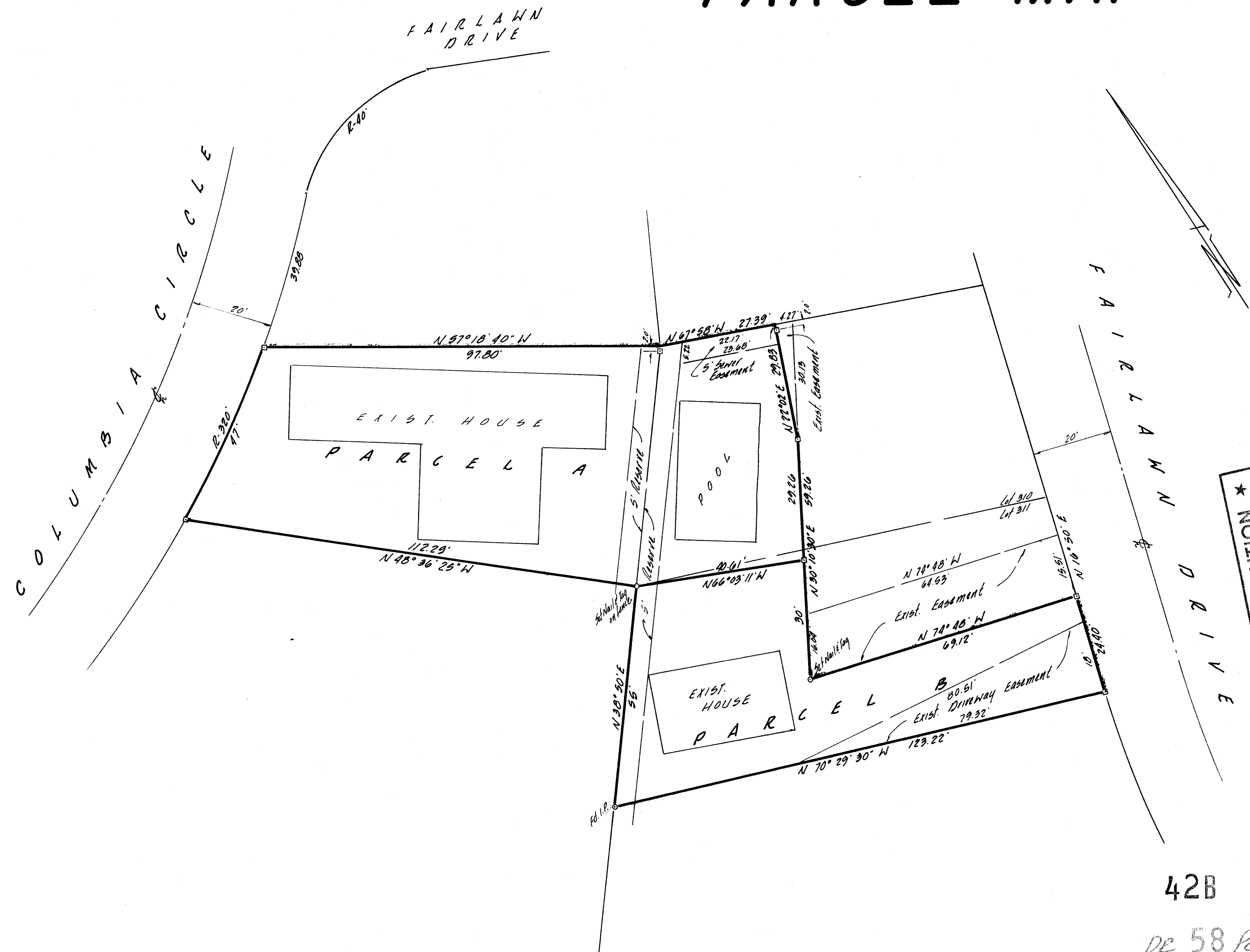


# PARCEL MAP



This map was prepared by me or under my direction and was compiled from record data and is based upon a field survey in conformance with the requirements of the Subdivision Map Act of the request of D. Lindley Henry on Sept. 15, 1967. I hereby certify that it conforms to the approved tentative map and the conditions of approval thereof; that all provisions of applicable state law and local ordinances have been complied with.

Lowell Dean Bailey  
Licensed Land Surveyor 1289

This map has been examined this 20<sup>th</sup> day of September 1967 for conformance with the requirements of Section 11575 of the Subdivision Map Act.

Roy E. Coker  
City Engineer

This map has been approved by the Planning Commission, City of Berkeley at their meeting of August 16, 1967, and when recorded this map becomes the official map of this land division.

John D. Gray  
Secretary of Planning Commission

★ USE WITH CAUTION ★  
THIS IS A PUBLIC WORKS DEPARTMENT MAP  
WORKING COPY OF AN OFFICIAL MAP  
ON FILE IN THE OFFICE OF THE COUNTY  
RECORDERS, COUNTY OF ALAMEDA.  
FICE INFORMATION OR CALCULATIONS  
MAY HAVE BEEN ADDED HEREON.

## RECORDER'S CERTIFICATE

Filed for record this 26<sup>th</sup> day of JUNE 1968, at 11:45 A.M., in Book 58 of Parcel Maps at page 38 of the request of L. Dean Bailey.

\$ 5.00

Jack G. Blue  
County Recorder

by Sharon Kelly  
Deputy County Recorder

PLAT OF LOT 307 &  
PORTION OF LOTS 310 & 311  
BERKLEY VIEW TERRACE  
BERKELEY ALAMEDA COUNTY  
CALIFORNIA

RECEIVED  
ALAMEDA COUNTY ROAD DEPARTMENT

JUL 9 1968

Referred to .....  
Answered .....

SCALE: 1" = 20'

DATE: SEPTEMBER 1967

PM 287 509/1495  
Sheet 1 of 1

This is a copy of a map on file in the Recorder's Office of Alameda County. No representation of any kind is made as to the accuracy of the original official map from which this is copied, and this copy carries with it no representation of any kind other than that it is a copy.

Any questions concerning this map should be directed to the Recorder's Office of Alameda County.  
DIETTERICH POST COMPANY

NOTES  
- Set 282 R/W hub  
Basis of Bearings - Map of Berkeley View Terrace

OWNERS: D. LINDLEY & BETTY HENRY 615 JACKSON ST. ALBANY  
HELLA R. FLUSS 7 COLUMBIA CIR. BERKELEY,  
SUBDIVIDER: D. LINDLEY HENRY 615 JACKSON ST. ALBANY  
SURVEYOR: BATES AND BAILEY CE-LS  
15 SHATTUCK SQ. BERKELEY, CALIF.