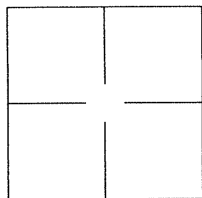


# CORNER RECORD

AGENCY INDEX BK 128 PG 80Document Number CR13604City of OAKLANDCounty of ALAMEDA, CaliforniaBrief Legal Description MONUMENT ON DAVIS STREET AND HUMBOLDT AVENUE

## CORNER TYPE

Government Corner ☐ Control ☒  
Meander ☐ Property ☐  
Rancho ☐ Other ☐

Date of Survey 2019-06-26

## COORDINATES (Optional)

N. \_\_\_\_\_ E. \_\_\_\_\_

Elevation \_\_\_\_\_

Units Metric ☐ U.S. Survey Foot ☐

Horizontal Datum \_\_\_\_\_

Zone \_\_\_\_\_ Epoch Date \_\_\_\_\_

Vertical Datum: \_\_\_\_\_

☐ Complies with Public Resources Code §§8801-8819☐ Complies with Public Resources Code §§8890-8902PLS Act Ref.: ☐ 8765(d) ☒ 8771 ☐ 8773 Other: \_\_\_\_\_

Corner/  
Monument: ☒ Left as found ☐ Established ☐ Rebuilt ☒ Pre-Construction  
☐ Found and tagged ☐ Reestablished ☒ Referenced ☐ Post-Construction

Narrative of corner identified and monument as found and set or reset:

☒ See sheet #2 for description(s):

FOUND MONUMENTS AS NOTED ON SHEET 2 REFERENCED PRIOR TO CONSTRUCTION ACTIVITIES.

## SURVEYOR'S STATEMENT

This Corner Record was prepared by me or under my direction in conformance with  
the Professional Land Surveyor's Act on 13 November, 2019.

Signed [Signature] P.L.S. or R.C.E. No.: 8040

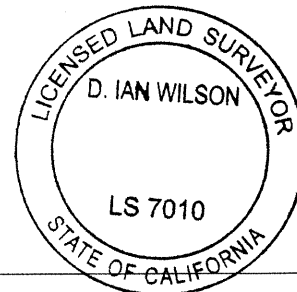
## COUNTY SURVEYOR'S STATEMENT

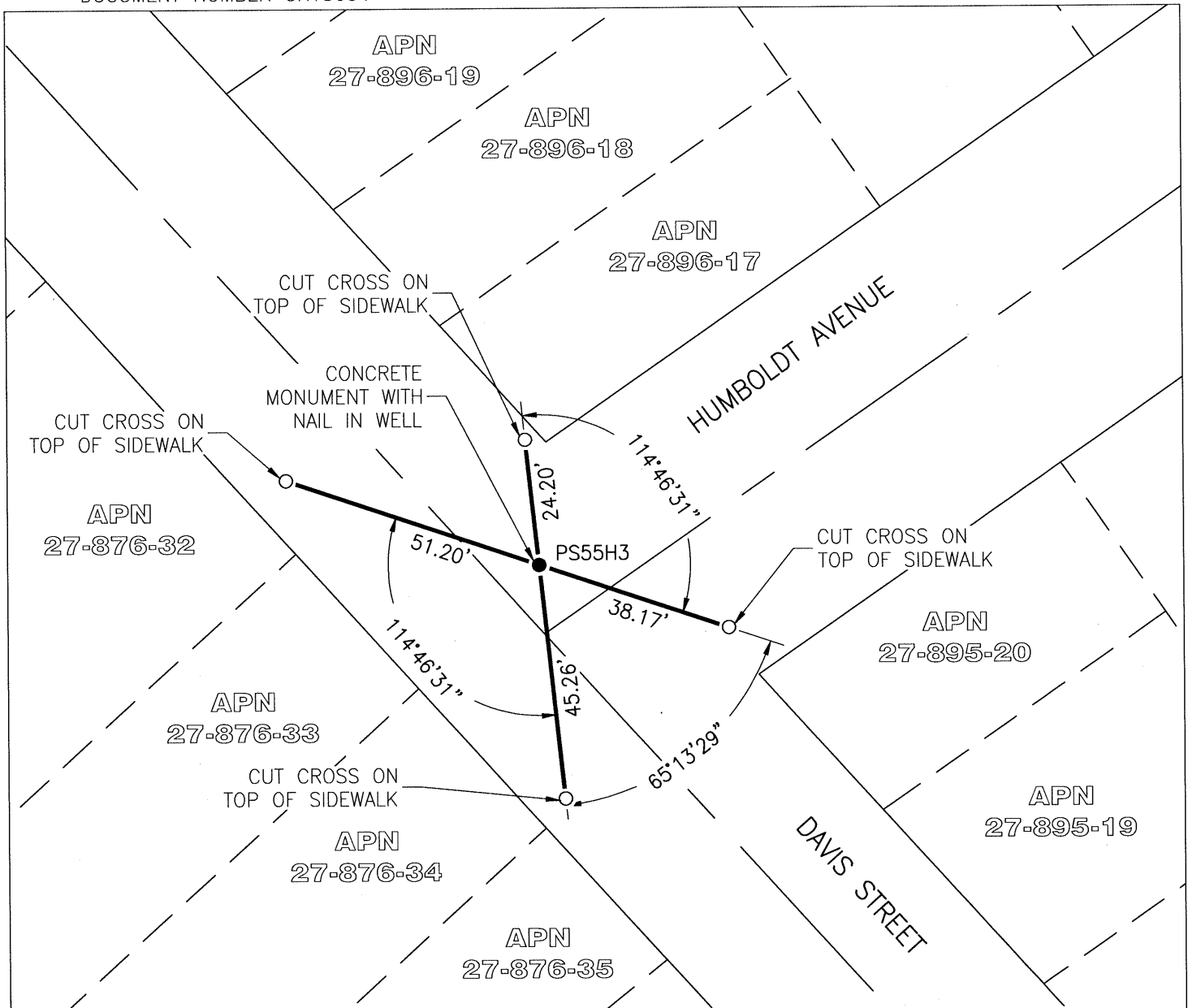
**NOV 12 2019**

This Corner Record was received \_\_\_\_\_, 2019 and examined  
and filed **DEC 02 2019**, 2019.

Signed D. Ian Wilson P.L.S. or R.C.E. No.: 7010Title **ALAMEDA COUNTY SURVEYOR**

County Surveyor's Comment \_\_\_\_\_





# LEGEND

- FOUND MONUMENT AS NOTED
- SET REFERENCE POINTS WITH TAG STAMPED "LS 8040" AS SHOWN
- APN ASSESSOR'S PARCEL NUMBER
- PS55H3 ALAMEDA COUNTY MONUMENT ID

SCALE

1" = 30'